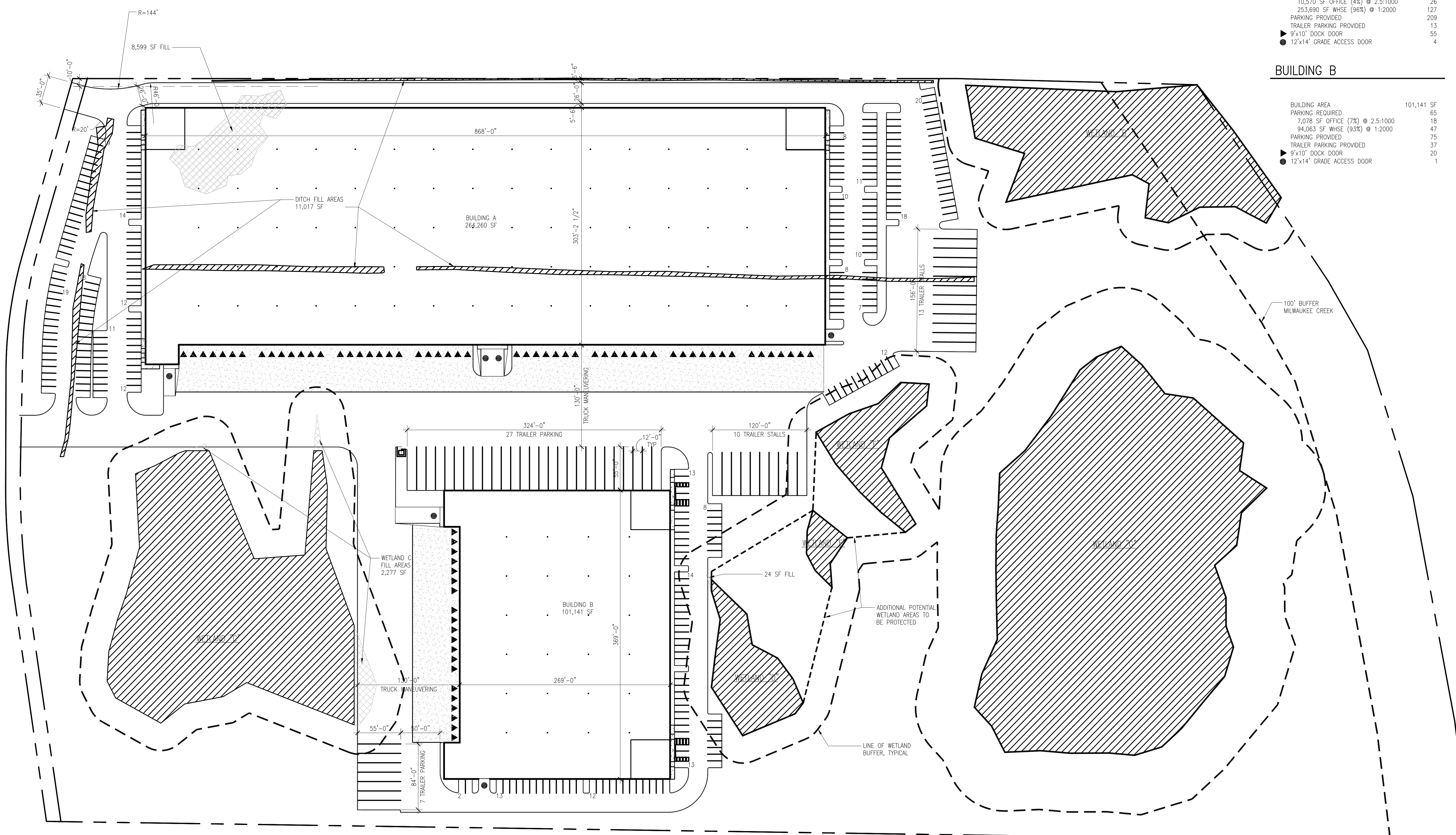


BUILDING A

BUILDING AREA	264,260 SF
PARKING REQUIRED	153
10,570 SF OFFICE (4%) @ 2.5:1000	26
253,690 SF WHSE (96%) @ 1:2000	127
PARKING PROVIDED	209
TRAILER PARKING PROVIDED	13
9'x10' DOCK DOOR	55
12'x14' GRADE ACCESS DOOR	4

BUILDING B

BUILDING AREA	101,141 SF
PARKING REQUIRED	65
7,078 SF OFFICE (7%) @ 2.5:1000	18
94,063 SF WHSE (93%) @ 1:2000	47
PARKING PROVIDED	75
TRAILER PARKING PROVIDED	37
9'x10' DOCK DOOR	20
12'x14' GRADE ACCESS DOOR	1



REVISIONS

ISSUE NO.	DATE	ITEM
1	05 16 2017	SEPA SUBMITTAL

PROFESSIONAL STAMP

PROJECT INFORMATION

DCT LANDING
SPECULATIVE INDUSTRIAL
3401 WEST VALLEY EAST
SUMNER, WA

SHEET INFORMATION

RELEASE FOR:	SEPA SUBMITTAL
TITLE:	SITE PLAN
DESIGNED BY:	DRAWN BY:
REVIEWED BY:	APPROVED BY:
DATE:	05 16 2017
PROJECT NO.:	201307.03.010
SHEET NO.:	

1 SITE PLAN
SCALE: 1" = 60'

