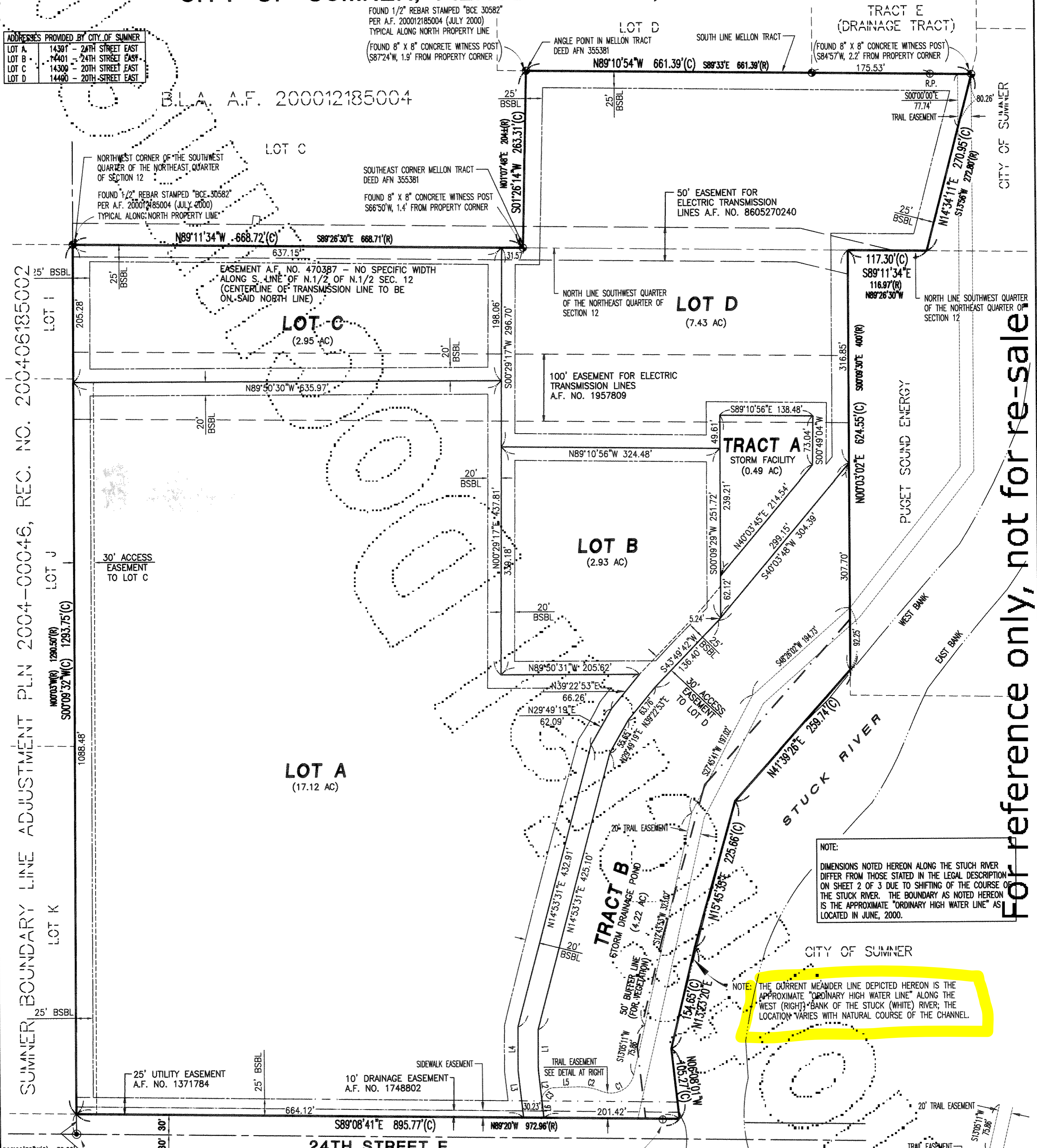


SUMNER LANDING NORTH

PORTIONS OF THE SW1/4 AND NW1/4 OF THE NE1/4 SECTION 12, TOWNSHIP 20 NORTH, RANGE 4 EAST, WILLAMETTE MERIDIAN CITY OF SUMNER, PIERCE COUNTY, WASHINGTON

ADDRESSES PROVIDED BY CITY OF SUMNER

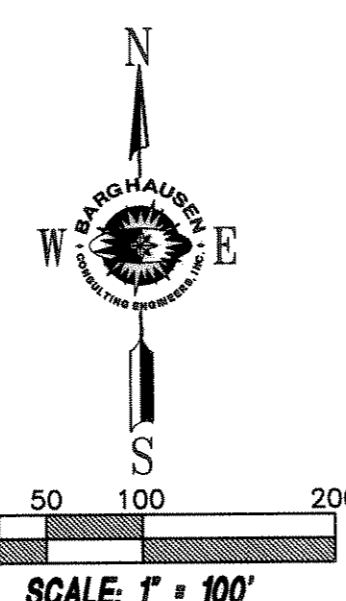
LOT A	14301 - 24TH STREET EAST
LOT B	14401 - 24TH STREET EAST
LOT C	14300 - 20TH STREET EAST
LOT D	14400 - 20TH STREET EAST



SUMNER BOUNDARY LINE ADJUSTMENT PLN 2004-00046, REC. NO. 200406185002

142ND AVENUE E.

LEGEND
 (R) DIMENSION CITED IN THE LEGAL DESCRIPTION ON SHEET 2
 (C) DIMENSION CALCULATED FOR THIS SURVEY

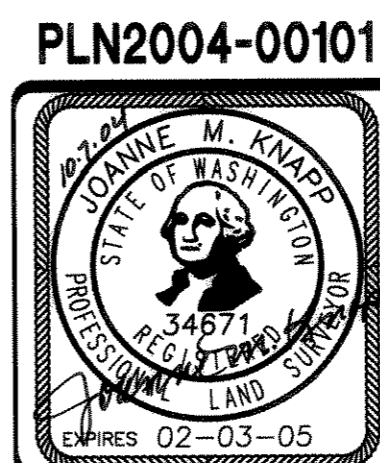


LINE TABLE

LINE	LENGTH	BEARING
L1	59.55'	S00°09'33"W
L2	72.16'	S06°09'56"E
L3	70.12'	N06°09'56"W
L4	65.09'	N00°09'33"E
L5	35.37'	N88°32'08"E
L6	14.74'	N00°00'00"E

CURVE TABLE

CURVE	LENGTH	RADIUS	DELTA	TANGENT
C1	61.19'	35.00'	100°10'37"	41.84'
C2	35.39'	84.21'	24°04'47"	17.96'
C3	30.90'	20.00'	88°32'08"	19.50'



Barghausen Consulting Engineers, Inc.
 Civil Engineering, Land Planning, Surveying, Environmental Services
 18215 72nd Avenue South, Kent, WA 98032
 Telephone: (425) 251-6222 Fax: (425) 251-8782

SW1/4 & NW1/4 OF NE1/4, 12-T20N-R4E, W.M.

SHEET 3 OF 4

For reference only, not for re-sale

Original

2004/1035001