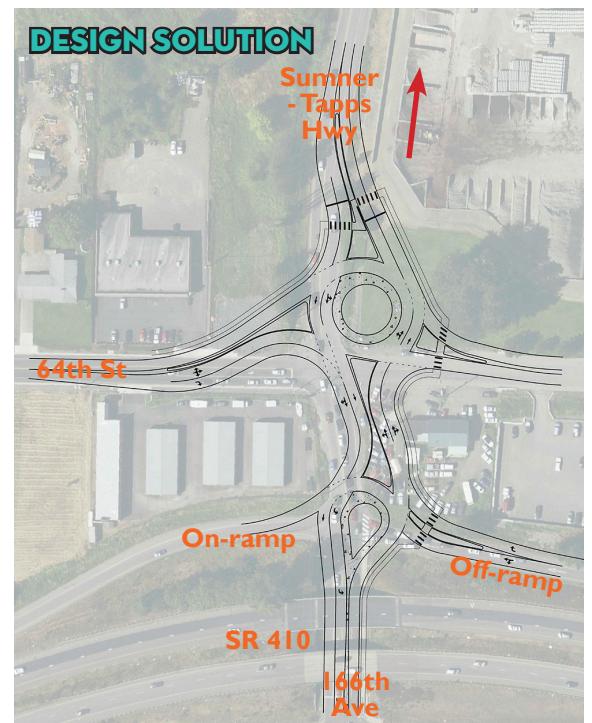


166TH/SR410 INTERCHANGE

THE CHALLENGE

The State Route 410/166th Avenue interchange is a congested mess. Originally built in the early 1970s, this interchange serves regional commuters cutting through Sumner to avoid the SR 167/SR 162 congestions and thousands of vehicles trying to access busy commercial areas. Plus, **this is a completely unsafe intersection for drivers** with westbound offramps having only a stop sign (A); an existing intersection too close to the ramps (B); a complete lack of pedestrian facilities, and a small, buried culvert that prevents fish from continuing to access habitat in Salmon Creek (C).



SOLUTIONS

- Widen the remaining two-lane stretch of 166th Avenue - to eliminate the bottleneck just north of the existing SR410 interchange.
- Design and construct a double round-about so that vehicles can safely exit the SR410 Westbound off ramp and easily access Sumner-Tapps Highway to Lakeland Hills/Bonney Lake, 64th Street to the regional YMCA and Sumner; the westbound SR 410 on-ramp or 166th south to Tehaleh, Orting and unincorporated Pierce County.
- Replace an existing undersized culvert with a new fish-passage culvert to carry Salmon Creek across the existing intersection at 166th Avenue and 64th Street. Daylight a portion of stream channel to improve salmon habitat.

DRIVING ECONOMIC GROWTH/HOUSING

This interchange provides the key access point for businesses like Winco, Sunset Ford and the newly built Gordon Family YMCA. For comparison, Sumner has a population of 10,000 while the YMCA has a membership base of 21,000, plus programs like Teen Late Night that don't require membership. We have one mixed-use large multi-family development in the permit process with pre-applications for two more multi-family developments that will rely on this interchange for safe access to affordable housing.



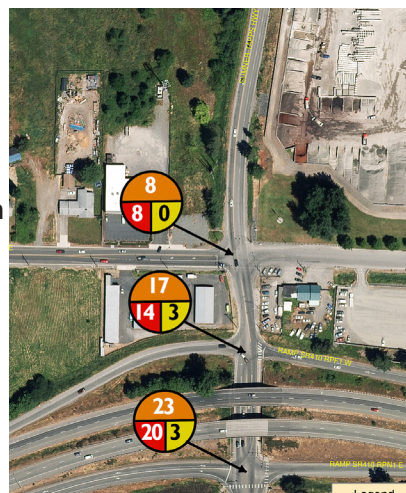
IMPROVE FISH PASSAGE

This project will continue the City of Sumner's ongoing effort to enhance fish habit in Salmon Creek by replacing the current culvert under the intersection of 166th Ave E with a fish-passage culvert designed to meet today's standards in this environmentally significant creek. Restoring Salmon Creek helps critical fish runs that improve the health of Puget Sound and Orca whales.

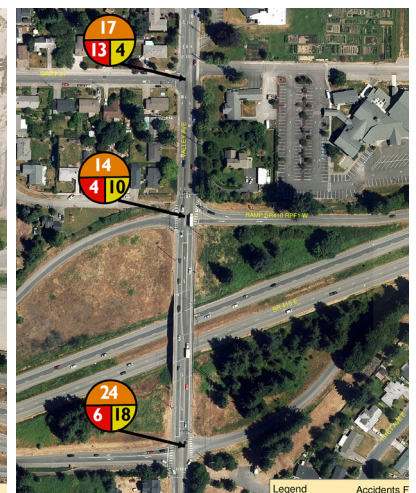


SAFETY FIRST

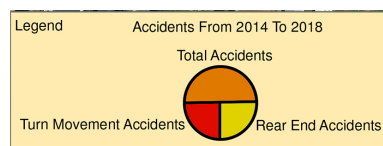
Provide a timely and cost-effective, "practical design" alternative to the much overcrowded SR 162 (Orting Highway) and SR 167 through Sumner, both of which will require long-term, major solutions. This solution will be led by City of Sumner, known for leveraging grant funds and producing successful projects that benefit the region.



166th Interchange



SR 162



Accident data from WSDOT & City of Sumner show that the total number of accidents are similar, but 166th experiences far more dangerous turning accidents than rear-ends.

FUNDING

PLANNING (2019) \$150,000 FUNDED - CITY OF SUMNER

DESIGN, ROW & PERMITTING (2021-2022) - EST. \$2.5 MILLION

\$25,000 PORT OF TACOMA GRANT | **SECURED**

CONSTRUCTION (2022-2024) - \$7 MILLION

\$2.5 MILLION WITHIN WSDOT RIGHT-OF-WAY

\$4.5 MILION OUTSIDE WSDOT RIGHT-OF-WAY

NEXT STEPS

This is one of three outdated Sumner interchanges on SR 410. With your support, we completed the SR 410/Traffic Avenue interchange on time and on budget. We ask that you reappropriate \$500,000 already approved for Traffic Avenue to this interchange. We also ask for an additional \$2 million in funding to complete design and make this project shovel ready.

MORE RESOURCES

[Go online at www.sumnerwa.gov](http://www.sumnerwa.gov) to view a short video highlighting the challenges and solutions to the bottleneck at SR 410/166th interchange.

