

Rainier View Park Covered Court

Request for Qualifications for Professional Services

Supplemental Information

The City did an extensive update on our Parks and Trail plans in 2018. This Parks & Trail Plan update helped the City identify areas of the City that were underserved as well as ways we could improve our current systems. The plan is available on the City website: <https://sumnerwa.gov/about/future-plans/parks-plan/>

Rainier View Park is located at 15603 Meade McCumber Road, Sumner, WA 98390. The City engaged with a consulting firm in 2018 for a preliminary design with cost estimates to pursue grant funding. The design was well received, and the City is hoping to receive funding through the Washington State Recreation and Conservation Office (RCO) and the State through the Local Communities Project program. If funding is not obtained the City may not more forward with the project. The RCO application and project information can be found at the link below:

<https://secure.rco.wa.gov/prism/search/ProjectSnapshot.aspx?ProjectNumber=20-1231>

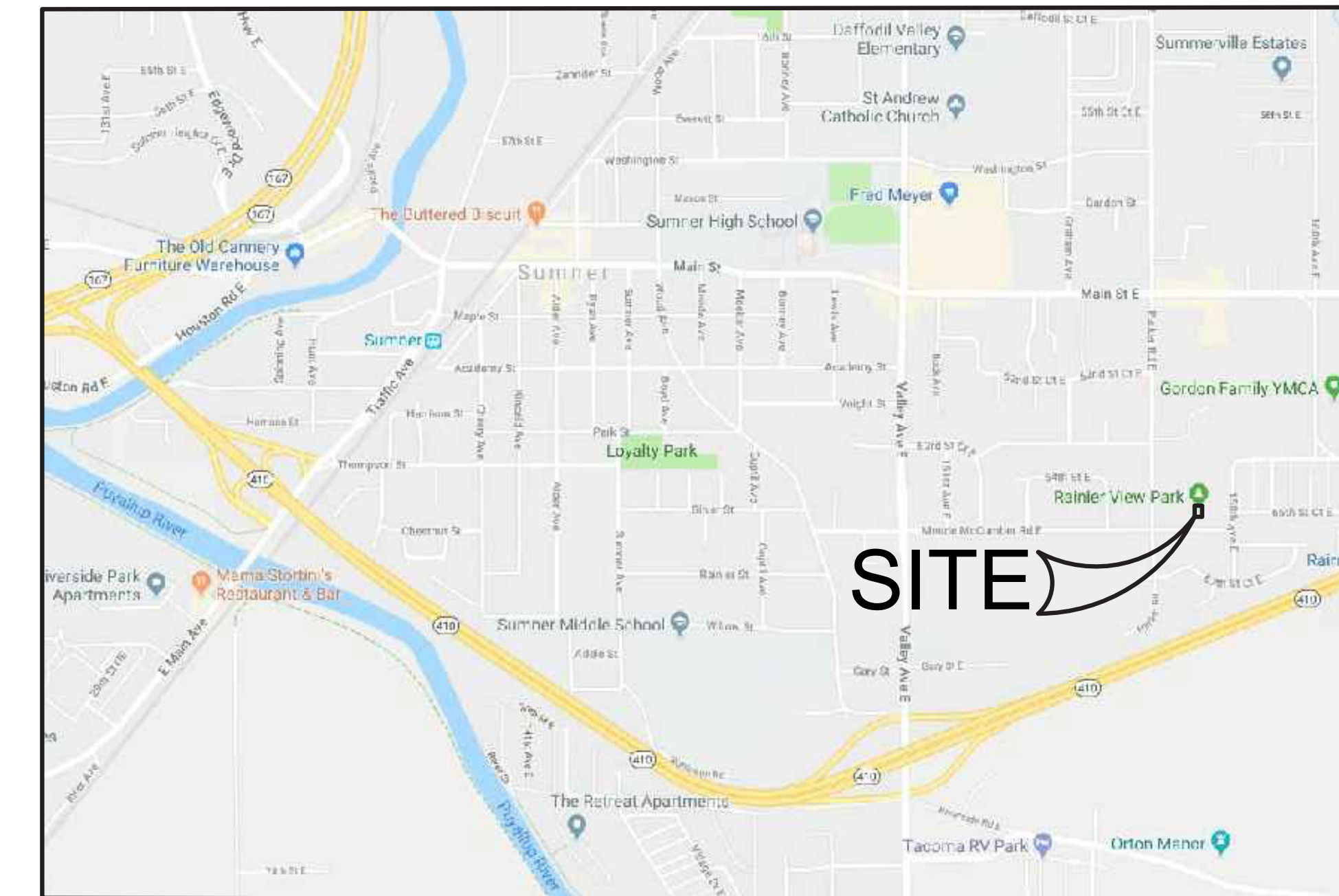
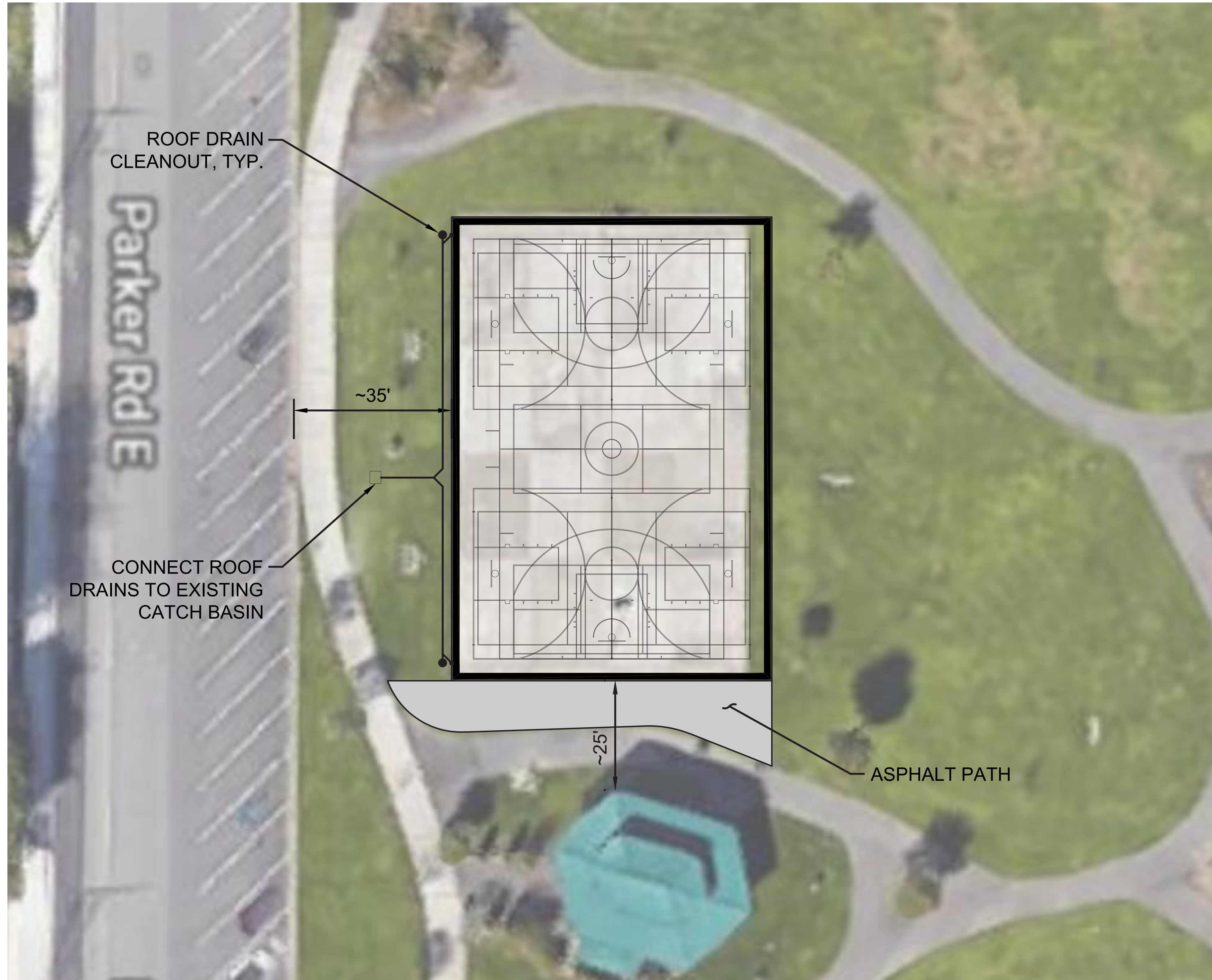
The following pages show the concept and initial design work.

Rainier View Park Play Shelter

SUMNER, WA



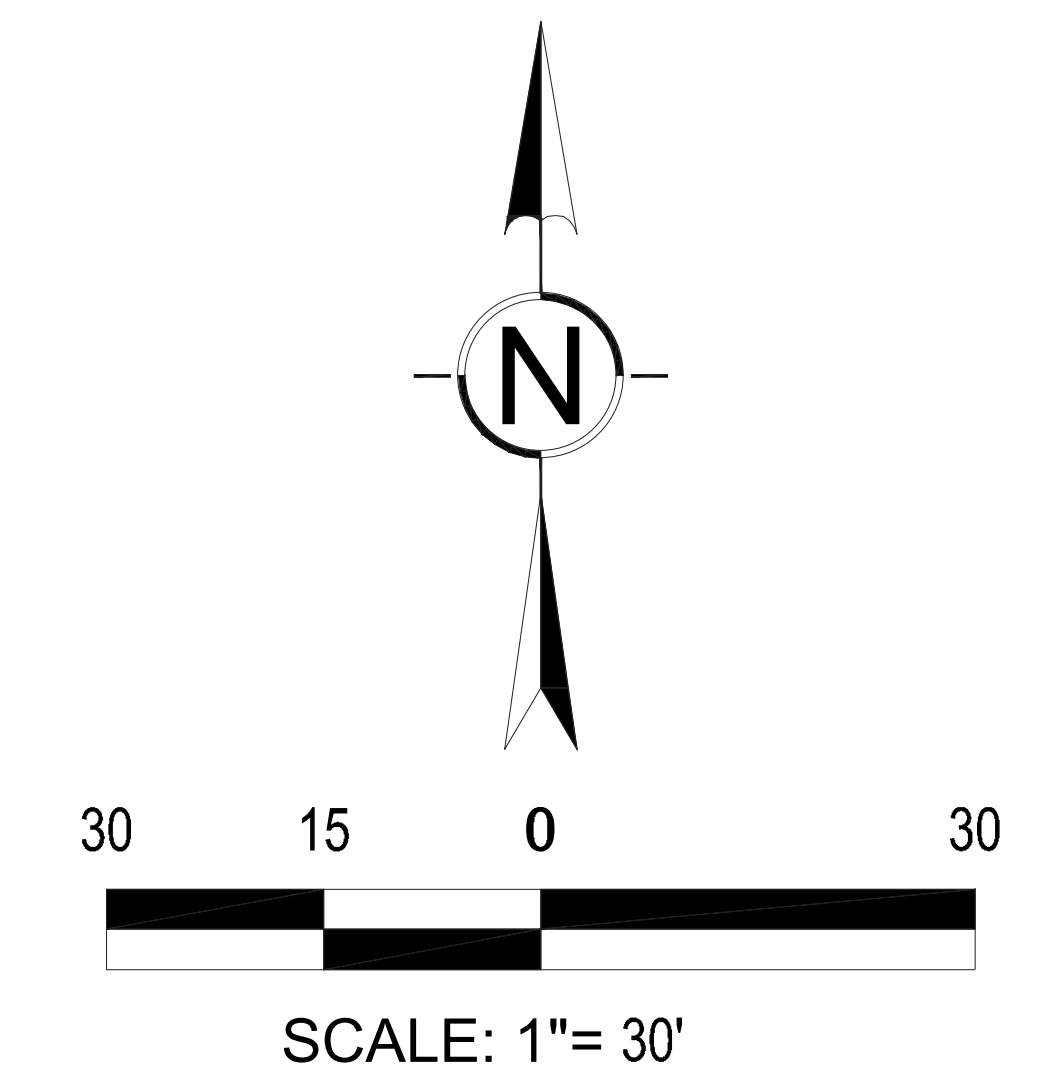
Site Plan



VICINITY MAP
NTS

IMPERVIOUS AREAS

NEW:	1,775 SF
REPLACED:	6,656 SF
TOTAL:	8,431 SF



Design Narrative and Additional Perspective Views

DESIGN HIGHLIGHTS

Our intent is to add a functional and aesthetic asset to the existing Rainier View Park with minimal physical presence. Design highlights include:

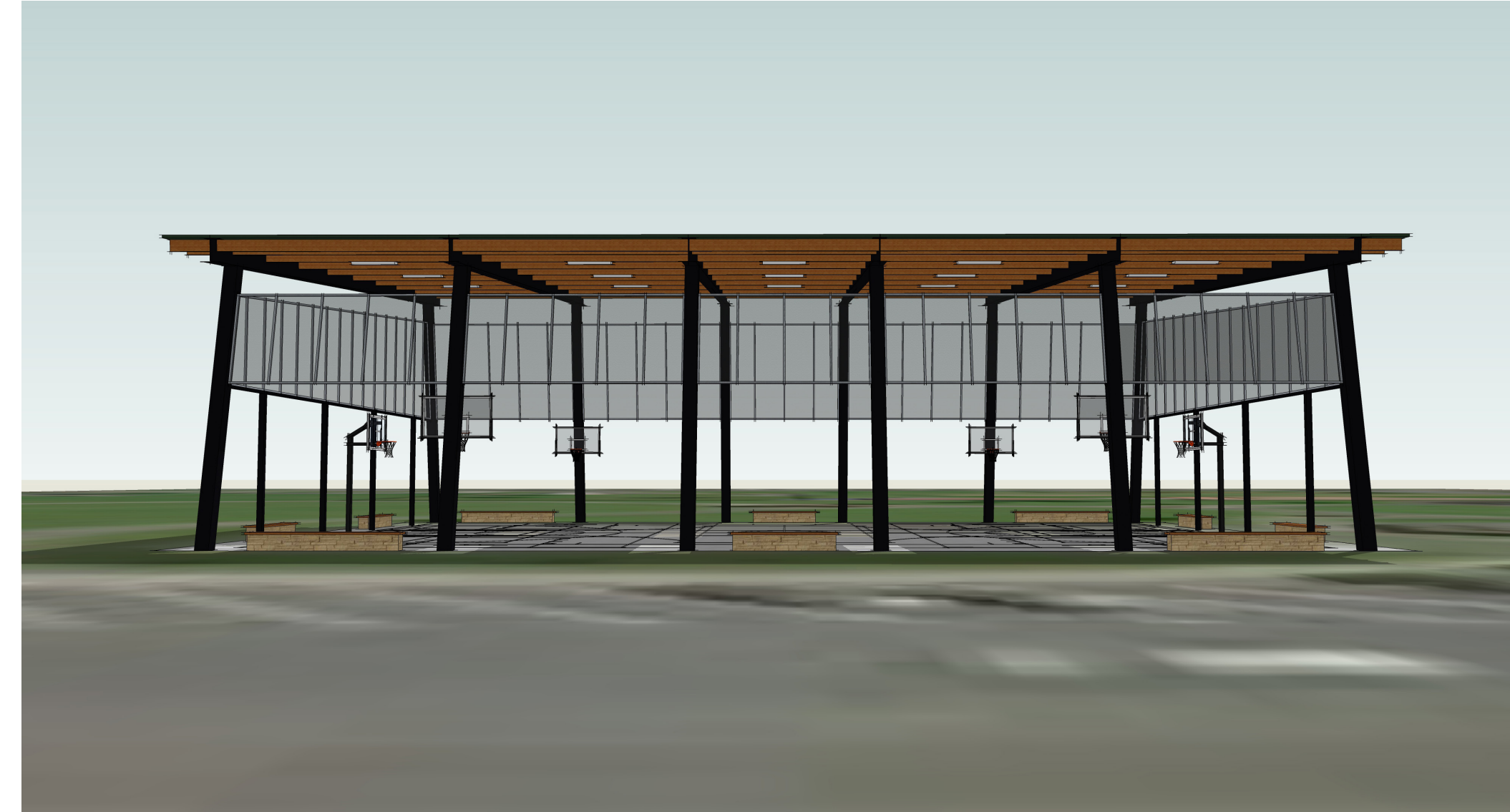
- A monoslope roof provides a low-profile roofline and introduces skylights for daylighting

- Slanted steel columns decrease perceived height and provide adequate roof eaves, while minimally increasing impermeable surface area.

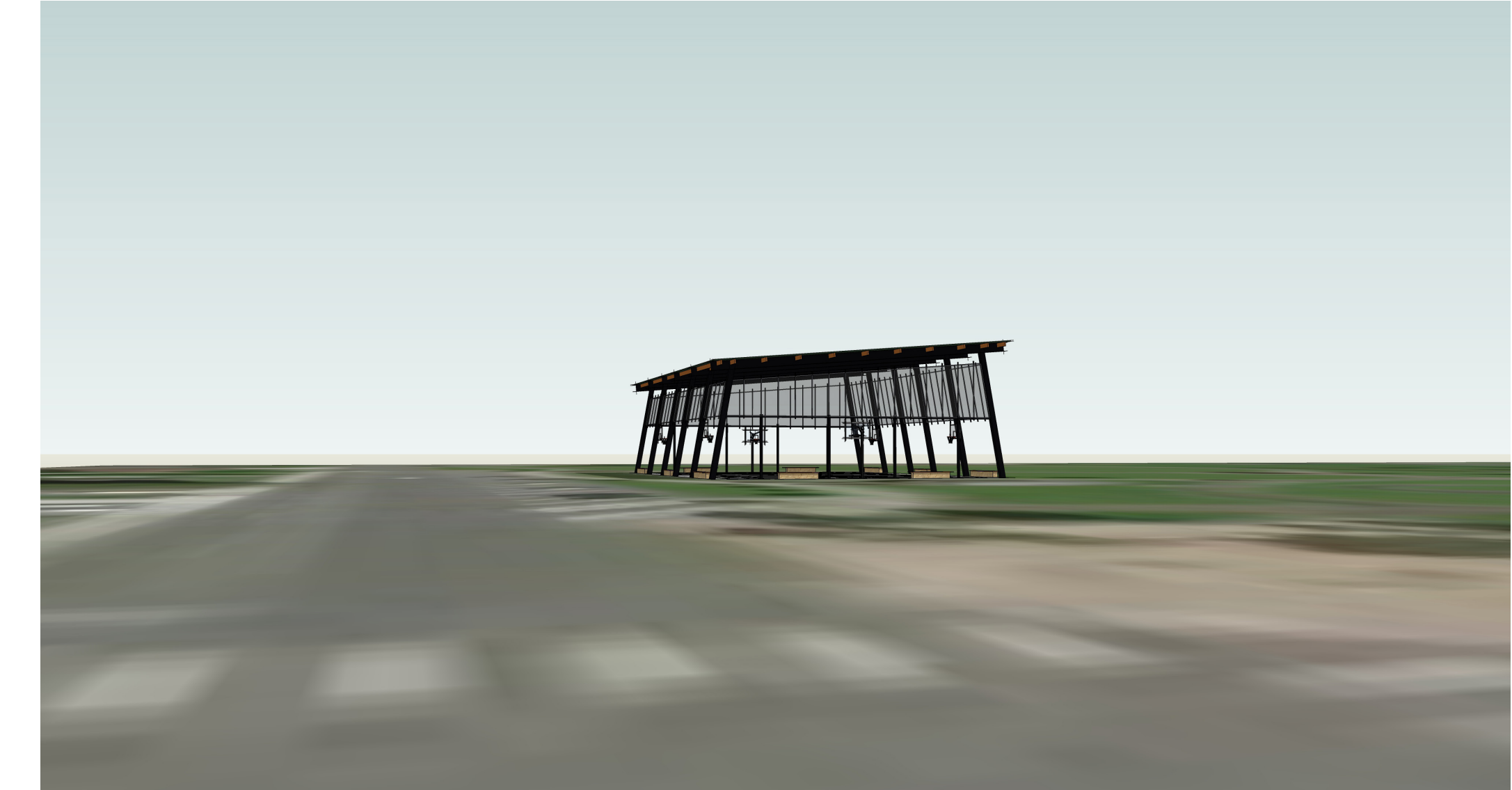
- Perforated metal panel headers provide rain protection, signage/graphics opportunities, and filtered daylight.

- Pony wall benches provide seating and enclosure for loose balls.

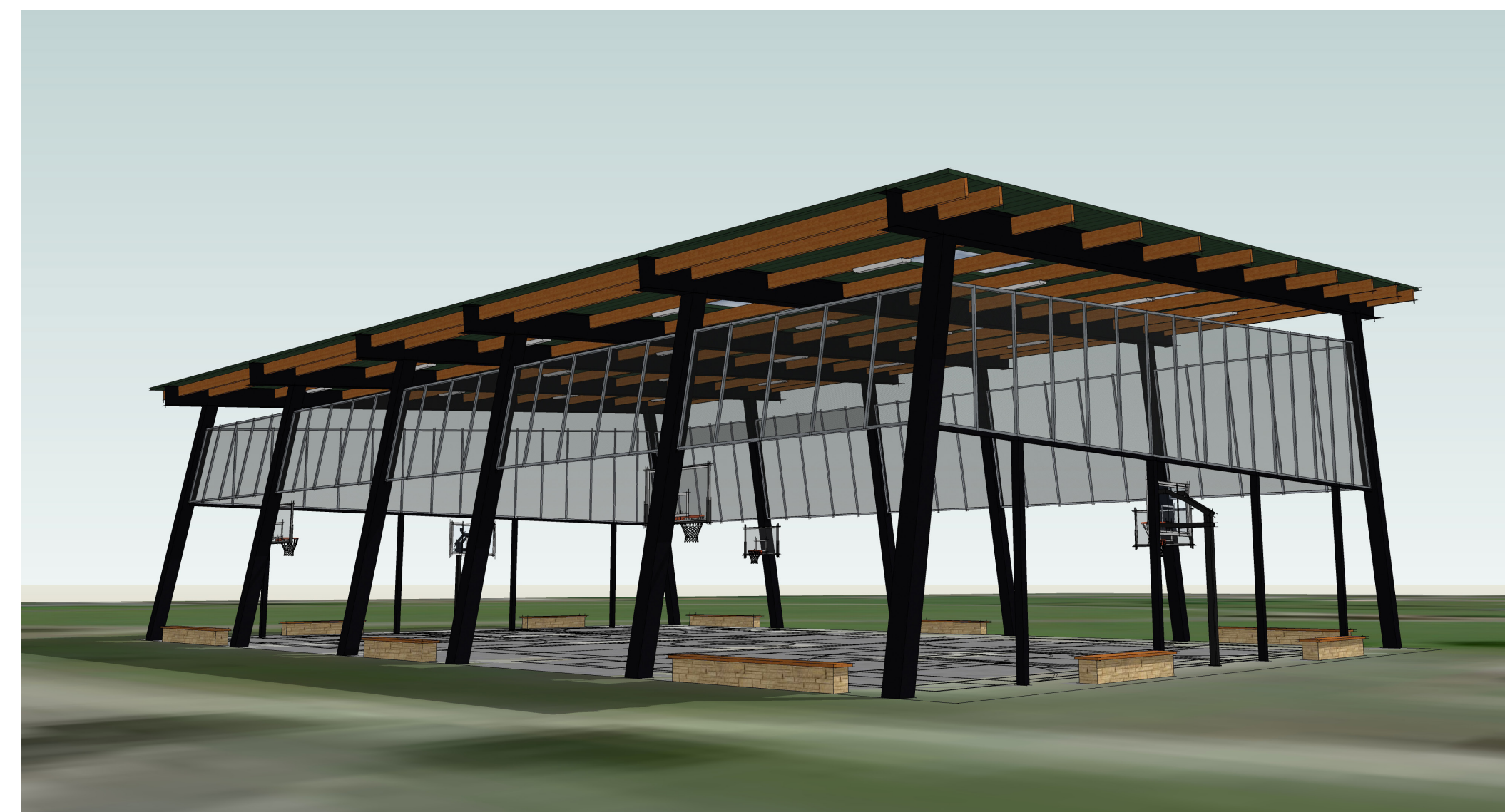
- Timed for public hours, an LED lighting system with motion sensors offers security monitoring after hours.



VIEW FROM SIDEWALK ACROSS STREET



VIEW FROM STREET INTERSECTION



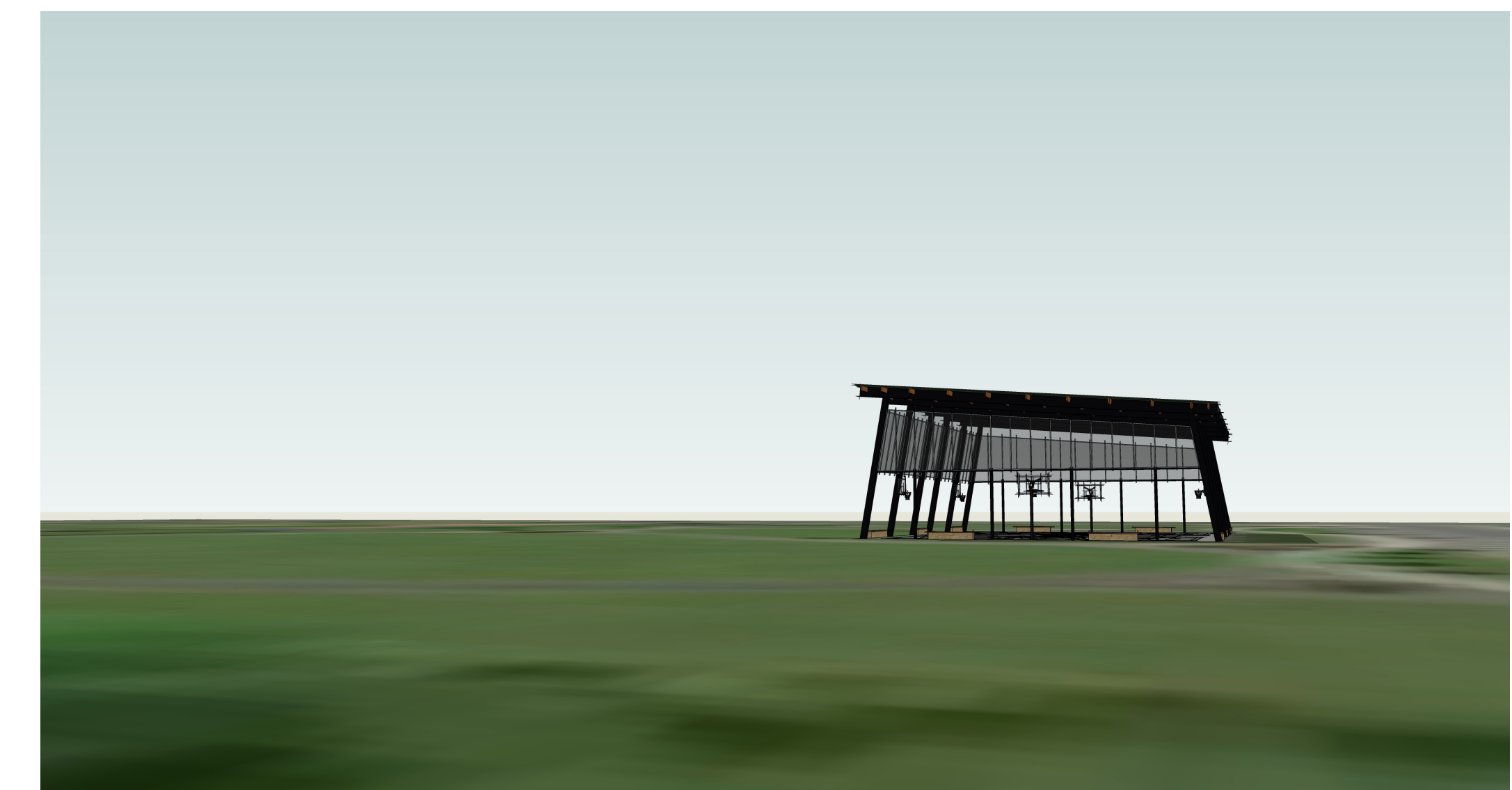
VIEW FROM PARKING



VIEW FROM PLAYGROUND



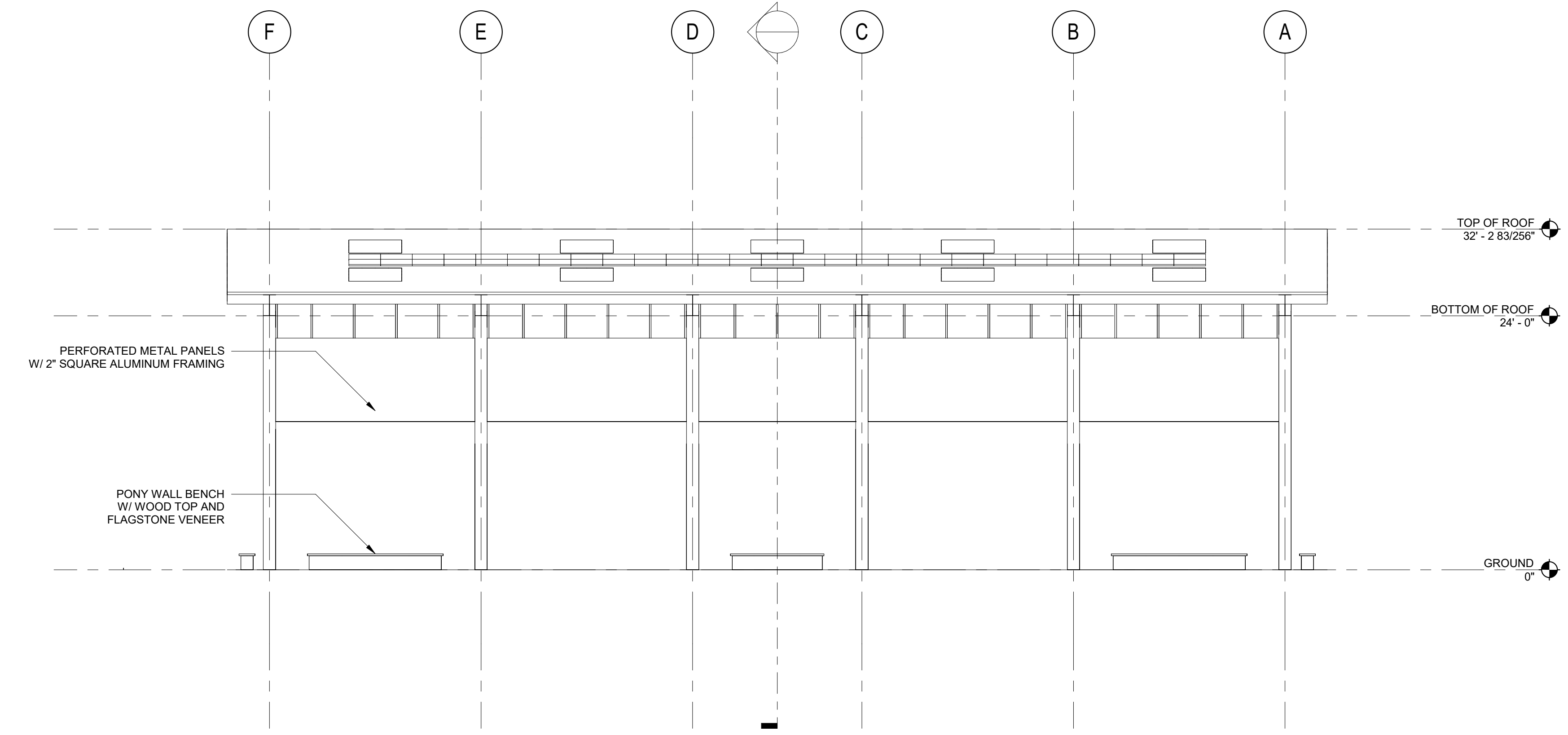
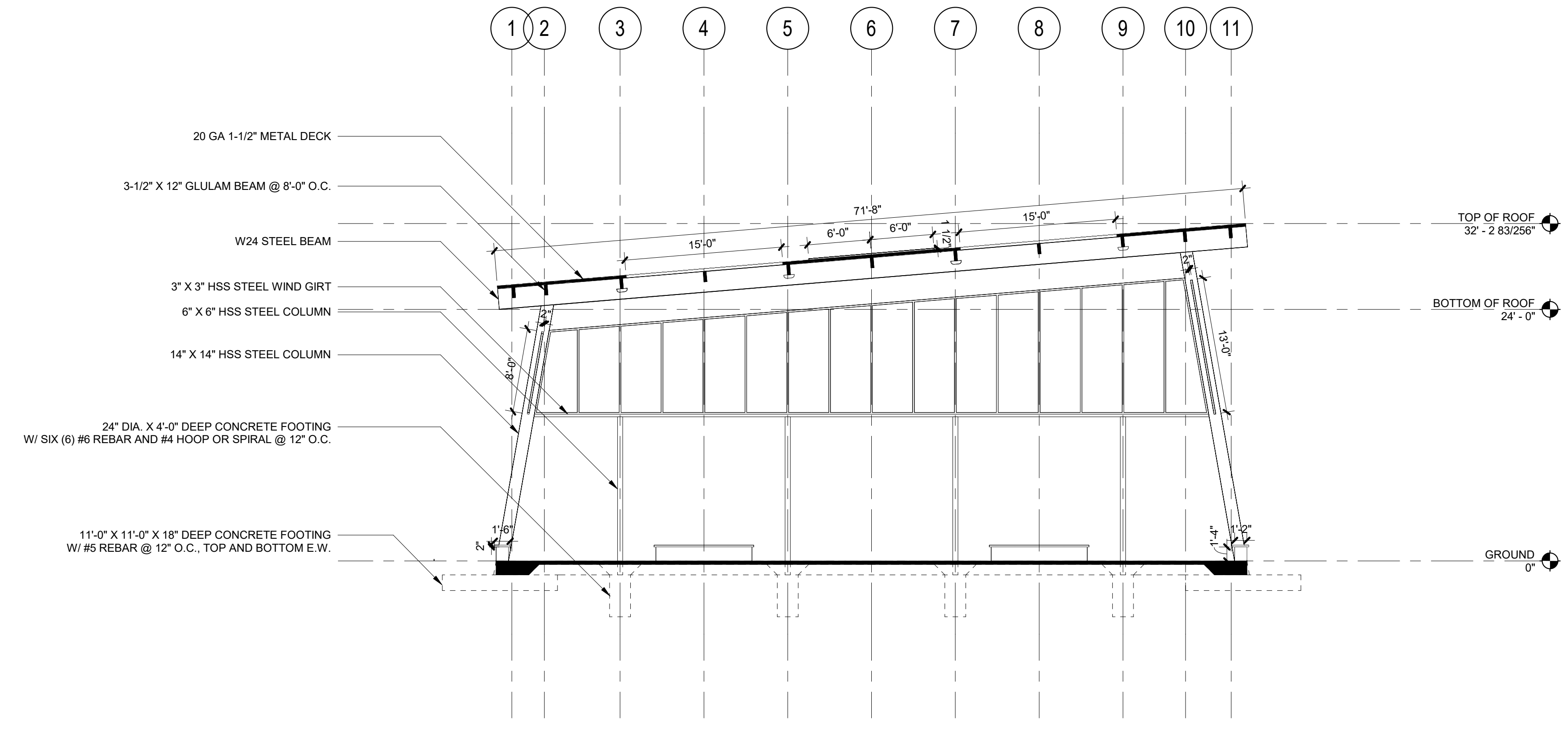
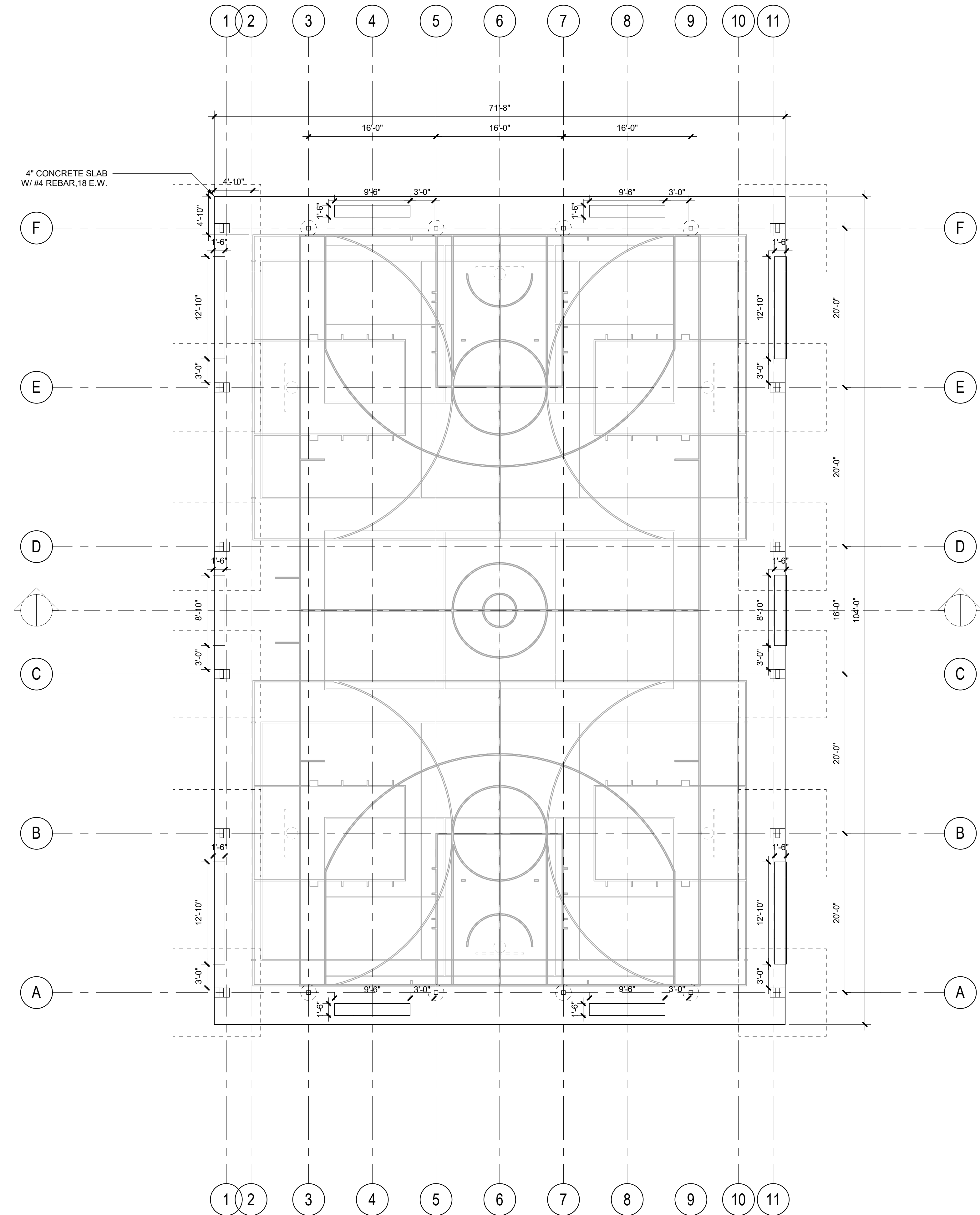
VIEW FROM WITHIN PARK



VIEW FROM NEIGHBORS

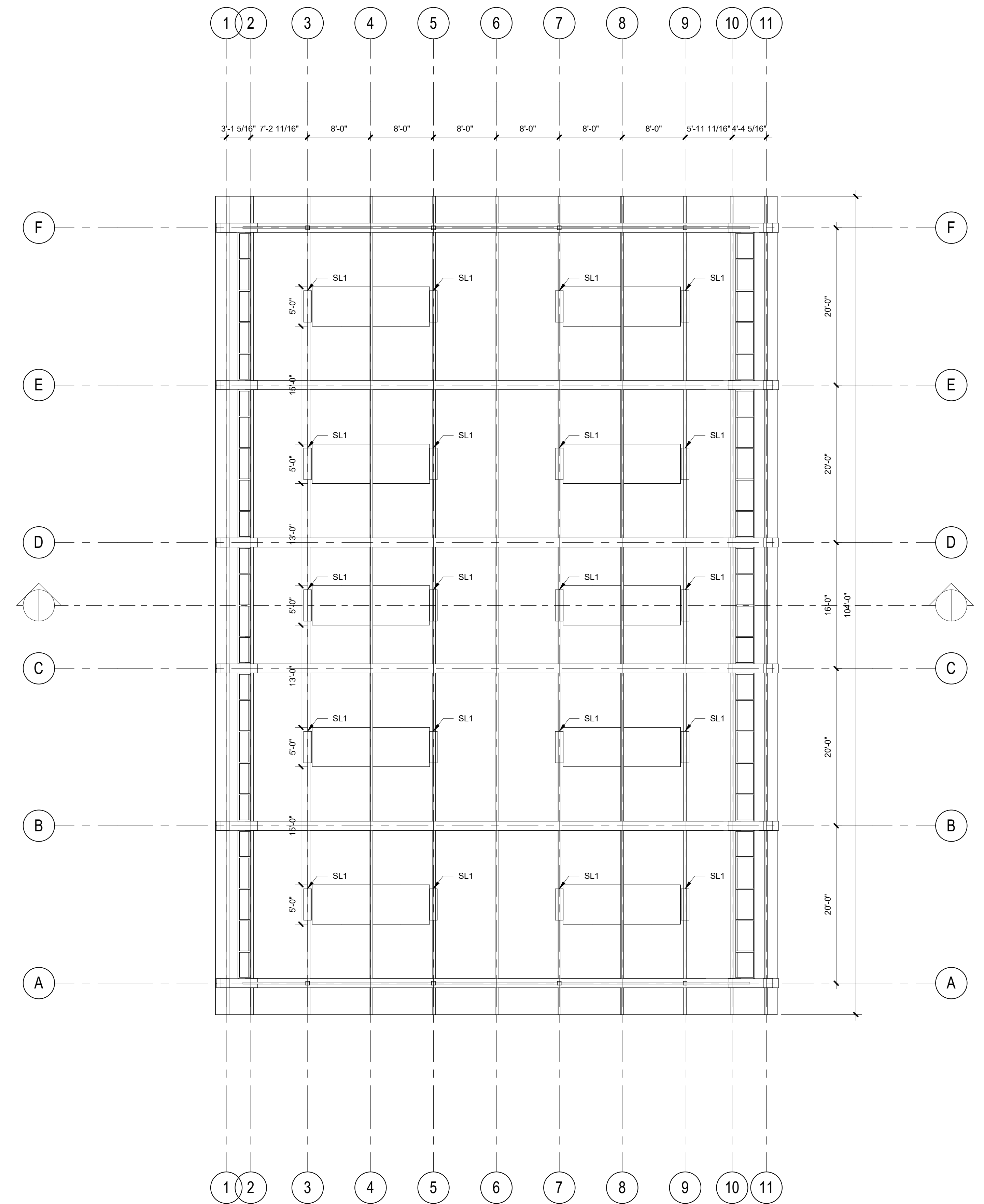
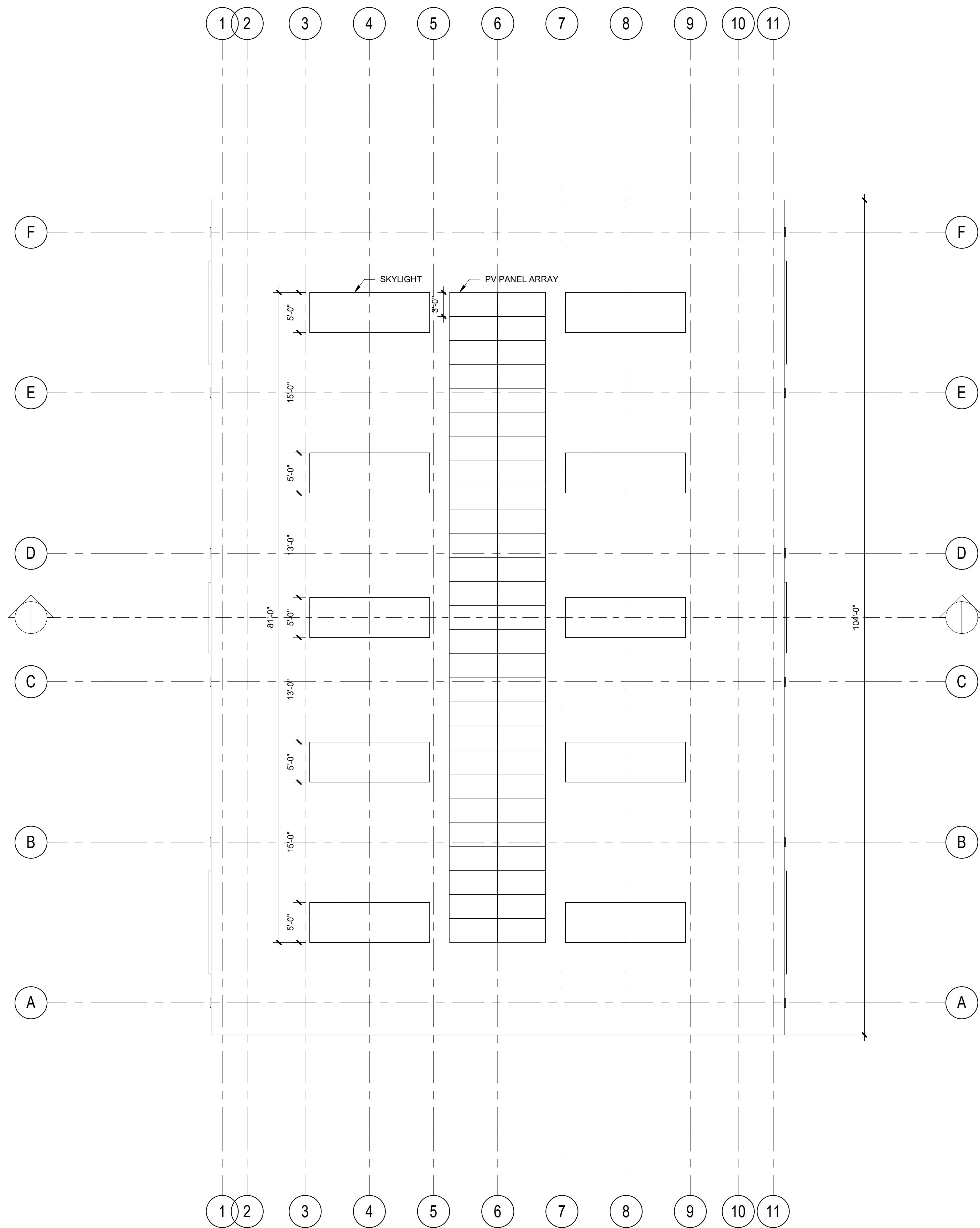
Floor Plan, South Section and West Elevation

SCALE: 1/8" = 1'-0"



Roof Plan and Reflected Ceiling Plan

SCALE: 1/8" = 1'-0"



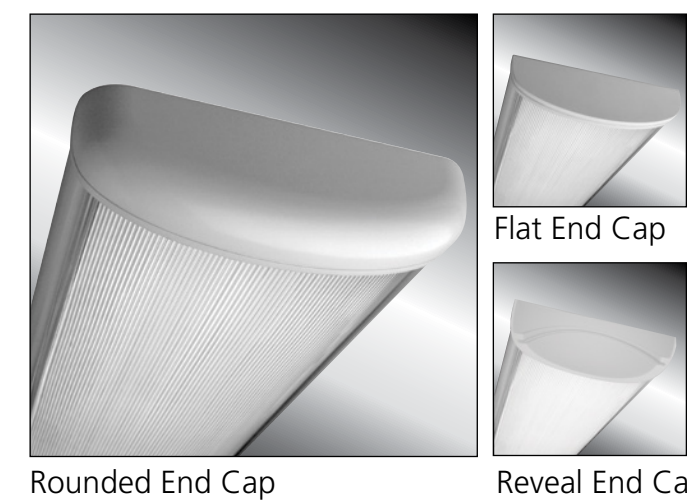
North

Outline Specification

MILLENIUM STRETCH™ MLHA12 SERIES

PRODUCT FEATURES:

- » Surface mount – ceiling or wall; 12"×24", 12"×36", 12"×48", 12"×72", 12"×96"
- » Extruded aluminum housing with decorative end caps
- » Peace of Mind Guarantee® against breakage
- » ADA compliant



PROJECT INFORMATION	
Job Name	Rainier View Park Play Shelter (18086)
Fixture Type	Millenium Stretch
Catalog Number	MLHA12-48-F-MW-CP-1-67L40K-DCC
Approved by	Kent McLaren

SPECIFICATIONS

HOUSING: Marine grade aluminum. Extruded body with die-cast end caps. Housing, with end caps, post assembly TGIC polyester powder coat finished – 5-step pre-treatment. See Ordering Information for standard, optional, architectural and custom finishes.

LENS: UV-stabilized, high impact extruded clear or pearlescent polycarbonate. Smooth exterior, linear prismatic interior. Nominal thickness .156". Lens securely positioned in body channels and end caps. Lens locked in place with tamper-resistant stainless steel Torx® with center pin fasteners and sealed with closed cell gaskets.

END CAPS: Marine grade die-cast aluminum. Three styles: Flat, Rounded and Reveal. Conduit and "Wiremold™ ready" knockouts visible only from interior of end cap (Flat and Rounded styles only).

SOCKETS: Shock-resistant sockets with internal locking collar to ensure positive lamp retention.

REFLECTOR: Full reflector/wire cover – 92% reflectivity.

HARDWARE: Stainless steel, tamper-resistant Torx fasteners secure lens in housing body's lens channel (four on 24", 36", and 48" housings; eight on 72" and 96" housings).

ELECTRICAL: LED: Available 3500K, 4000K and 5000K color temperatures, 82 CRI. 120-277VAC, 50/60Hz electrical input with serviceable high power factor electronic, constant-current driver (<20% THD, >0.95 PF). Standard 0-10V dimming with 1-100% range, maximum driver source of 500 µA. Optional embedded microwave motion sensor (MS) has factory default settings of 20 minute time out, dims down to 30%. LE: Class P ballasts. Fluorescent electronic 120/277/347 and dual voltage ballasts high power factor.

INSTALLATION: Standard four-point (24" housing) six-point (36" and 48" housings) and twelve-point (72" and 96" housing) mounting required for Peace of Mind Guarantee®.

TEKLINK™ TL50: An independent lighting control system embedded in the luminaire, featuring its own occupancy sensor, daylight harvesting and adjustable time-out/dimming settings.

TEKLINK™ TL100: Centralized, wired zonal occupancy and closed-loop daylight harvesting control system. TL100 controllers are standalone devices and ordered separately for luminaire. [Click here for specifications.](#)

PHOTOMETRICS: Photometry tested to the IESNA LM-79-08 standard by an ILAC/ISO17025 accredited laboratory. For additional photometric data, please go to www.kenall.com. LED product ambient temperature is -30°C to 40°C, unless otherwise noted.

WARRANTY: Limited ten (10) year warranty for LED Lamps.

LISTINGS: UL and CUL listed for Wet Location – covered ceiling mount. UL certified IP64 per IEC 60598. Damp rated – ceiling mount. Corner, horizontal wall and pendant mount installation – damp location only. ADA compliant. Approved by the New York State - Office of Mental Health.



In Stock SKU		
MLHA12-48-R-MW-PP-45L40K-DCC-1-DV	MLHA12-48-F-MW-PP-45L40K-DCC-1-DV	MLHA12-48-F-MW-CP-2-32-IS-1-DV

ORDERING INFORMATION (Ex: MLHA12-48-F-MB-PP-90L40K-DCC-DV-FS-9500)

Model	Length	End Cap	Finish	Lens	Lamp Qty	Lamp Type	Ballast/Driver	Circuit Qty	Voltage	Options	Accessories	TekLink	Controls Kit
MLHA12	48	F	MW	CP	1	67L40K	DCC						< >

Length	Lamp Type	Ballast/Driver Type	Accessories
24 2'	25L35K	DCC Dimming Constant Current (LED)	CMB§ Corner Mount Bracket (Must be ordered with DL Option)
36 3'	25L40K	IS Instant Start Electronic <10% THD (T8,T8HO)	9500 Torx® Screwdriver
48 4'	25L50K	RS Rapid Start Electronic <10% THD (T8,T8HO,T5,T5HO)	D-0552 Torx Driver Bit (Required for CMB Option)
72 Two 3' (factory connected)	45L35K	SB Specified Ballast	
96 Two 4' (factory connected)	45L40K		
	45L50K		
End Caps	Circuit Quantity†	TekLink	
F Flat	1 One	TL50§ TL50 Control System (Click here for specifications)	
R Rounded	2† Two (Two Ballast Minimum)	TL100 TL100 Control System (Click here for specifications)	
RV Reveal			
Finish	Voltage	Please consult Kenall Applications when ordering controls. Mounting heights above 14' may require alternate sensing technology.	
LG Light Gray	120 120 Volts		
MB Matte Black	277 277 Volts		
MW Matte White	347 347 Volts (Consult Factory)		
CC Custom Color (Consult Factory)	DV 120-277 Volts		
Lens	Options	Controls Kit	
CP‡ Clear Polycarbonate	EL†‡ 500 Minimum Lumen Battery Pack (90 Minutes; 32°F Starting Temperature)	< > Factory Assigned Internal Code	
PP Pearlescent Polycarbonate	PEL†‡ 1100 Minimum Lumen Battery Pack (90 Minutes; 32°F Starting Temperature)	† n/a on 2' T5/T5HO or 3' T5HO fixtures with EL, PEL, or TN options.	
	LEL LED Emergency Battery Backup (45L only, 32°F minimum operating temperature)	▲ n/a with 347V	
	CDF Captive Diffuser Fasteners	● 347V available with EL and PEL options only with two T8 lamps	
	DL Damp Location (Interior use NO gasketing)	▼ 2' Fixtures have minimum 350-450 lumen battery pack	
	FS Single Fuse & Holder (one per circuit)	■ n/a on 2' fixtures	
	NAT Natatorium Environment Option	‡ n/a with LED Lamp Options	
	PH Phillips Head Fasteners	§ PM and CMB not available in conjunction	
	PM§ Pendant Mount (stems by others; damp only)		
	TN†‡ Twin Tube Night Light – 5/7/9 watts (120V only)		
	UC† Uplight Component (Pendant Mount only; stems by others; damp only)		
	MS Motion Sensor (4' LED only) (n/a with 347 Voltage Option)		
	54A F54T5HO amalgam		

For additional photometry, go to www.kenall.com

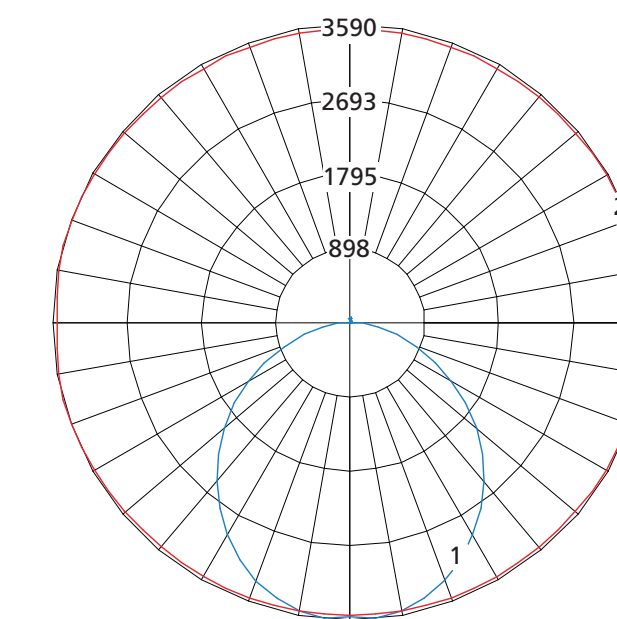
MILLENIUM STRETCH™ MLHA12 SERIES

PERFORMANCE

Length	Lamp Type	Initial Delivered Lumens		Input Power (W)	Drive Current (mA)	Estd. L70 LED Life (Hrs)
		@ 25°C	Efficacy (lm/W)			
2'	25L35K	2,507	100	25	100	175,000
	25L40K	2,673	107	25	100	175,000
	25L50K	2,673	107	25	100	175,000
	45L35K	5,014	102	49	100	175,000
	45L40K	5,345	109	49	100	175,000
	45L50K	5,345	109	49	100	175,000
4'	45L35K	5,014	102	49	100	175,000
	45L40K	5,345	109	49	100	175,000
	45L50K	5,345	109	49	100	175,000
	67L35K	7,717	106	73	75	175,000
	67L40K	8,227	113	73	75	175,000
	67L50K	8,227	113	73	75	175,000
	90L35K	9,894	101	98	100	175,000
	90L40K	10,548	108	98	100	175,000
	90L50K	10,548	108	98	100	175,000
	150L35K	15,534	93	167	113	130,000
	150L40K	16,561	99	167	113	130,000
	150L50K	16,561	99	167	113	130,000

Information above is valid for the recommended Type PP lens type and is subject to change without notice. Visit www.kenall.com for IES files and additional information.

Model: MLHA12-48-F-MW-PP-90L40K-DCC-1-DV



Maximum Candela = 3590 Located At Horizontal Angle = 15, Vertical Angle = 5

- 1 - Vertical Plane Through Horizontal Angles (15-195) (Through Max. Cd.)
- 2 - Horizontal Cone Through Vertical Angle (5) (Through Max. Cd.)

DIMENSIONAL DATA

CROSS SECTION/DETAILS

CORNER MOUNT BRACKET

MOUNTING HOLES

Nominal Three Foot Fixture Legend					Nominal Two Foot Fixture Legend					Nominal Four Foot Fixture Legend							
LMP	End Cap	A	B	D	LMP	End Cap	A	B	D	LMP	End Cap	A	B	D			
T8	R	39.132	34.312	16.500	33.000	T8	R	27.132	22.312	N/A	21.000	T8/LED	R	51.132	46.312	22.500	45.000
T8	F	37.308	34.312	16.500	33.000	T8	F	25.308	22.312	N/A	21.000	T8/LED	F	49.308	46.312	22.500	45.000
T8	RV	41.840	34.312	16.500	33.000	T8	RV	29.840	22.312	N/A	21.000	T8/LED	RV	53.840	46.312	22.500	45.000
T5	R	37.359	32.540	16.344	32.688	T5	R	25.548	20.728	N/A	20.875	T5	R	49.170	44.350	22.250	44.500
T5	F	35.523	32.540	16.344	32.688	T5	F	23.724	20.728	N/A	20.875	T5	F	47.346	44.350	22.250	44.500
T5	RV	40.067	32.540	16.344	32.688	T5	RV	28.256	20.728	N/A	20.875	T5	RV	51.878	44.350	22.250	44.500



www.kenall.com P: 800-4-Kenall F: 262-891-9701 10200 55th Street Kenosha, Wisconsin 53144
When you see this image, you will know the Kenall product shown or described is designed and manufactured in the USA with components purchased from US suppliers, and meets the Buy American requirements under the ARRA. Kenall has not determined the origin of its domestically purchased components or the subcomponents thereof. May be covered by patents found at www.kenall.com/patents. Content of specification sheets is subject to change; please consult www.kenall.com for current product details. © 2018 Kenall Mfg. Co. All rights reserved.

MLHA12-012418



www.kenall.com P: 800-4-Kenall F: 262-891-9701 10200 55th Street Kenosha, Wisconsin 53144
When you see this image, you will know the Kenall product shown or described is designed and manufactured in the USA with components purchased from US suppliers, and meets the Buy American requirements under the ARRA. Kenall has not determined the origin of its domestically purchased components or the subcomponents thereof. May be covered by patents found at www.kenall.com/patents. Content of specification sheets is subject to change; please consult www.kenall.com for current product details. © 2018 Kenall Mfg. Co. All rights reserved.

MLHA12-012418