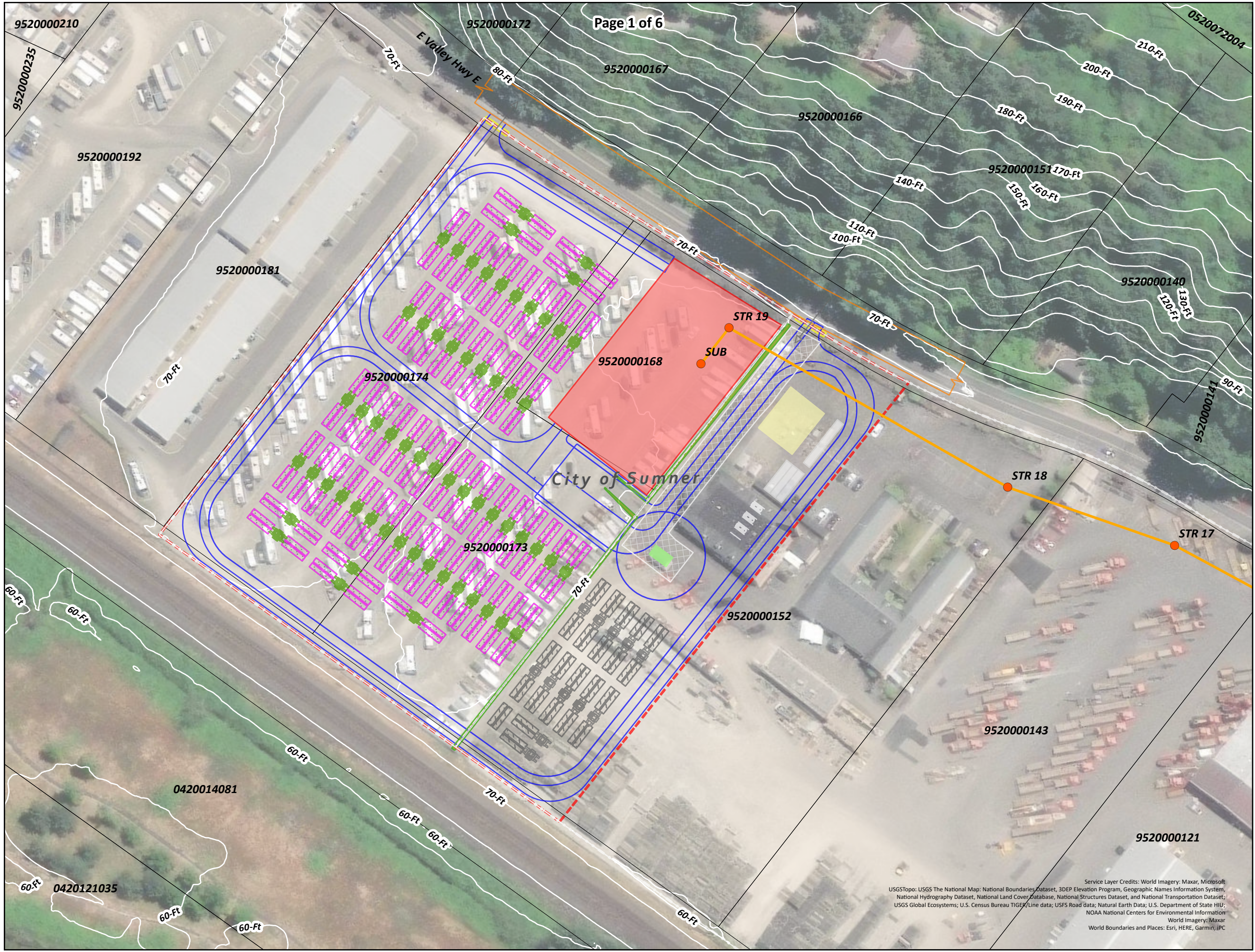


Attachment A – Site Plan

Revised 4.18.24



PRELIMINARY SITE PLAN & GEN-TIE
GREENWATER
 PIERCE CO., WA
 CONDITIONAL USE PERMIT



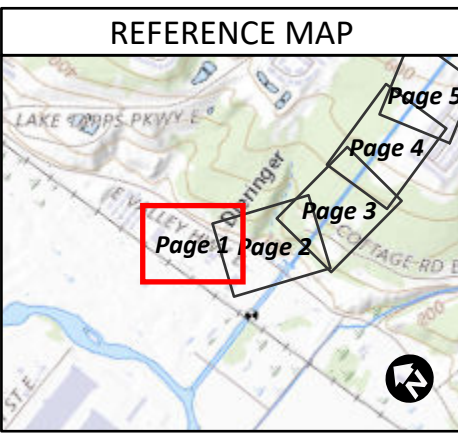
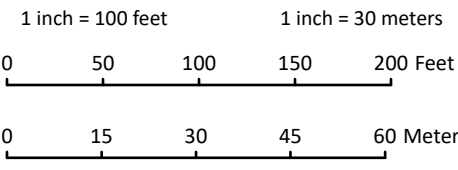
- PROPOSED STRUCTURE
- PROPOSED GEN-TIE
- CITY OF SUMNER BOUNDARY
- PARCEL LINE
- ACCESS GATE
- ACCESS ROADS
- AUGMENTATION
- BATTERY SKID
- COUNTY ROAD
- EXCLUSION AREA
- EXISTING RETAINING WALL
- FENCE
- LAY-DOWN AREA
- MAINTENANCE STORAGE CONTAINERS
- PARKING AREA
- PROPOSED PROJECT SUBSTATION AREA
- PUMPHOUSE
- SITE BOUNDARY
- TRANSFORMER

ESRI World Imagery, 2024;
 ESRI World Boundaries and Places, 2024;
 Power Engineers, 2023;
 USGS 3DEP 1m NED, 2020;

Map Developed by BrightNight, 2024;

Information shown on this map is compiled from numerous sources, may not be complete or accurate, is intended for planning only, is not suitable for construction, and is supplied without representations or warranties of any kind.

Date	04/18/2024
Project	GREE
Personnel	Figure Prepared by: BrightNight



Service Layer Credits: World Imagery: Maxar, Microsoft
 USGSTopo: USGS The National Map: National Boundaries Dataset, 3DEP Elevation Program, Geographic Names Information System,
 National Hydrography Dataset, National Land Cover Database, National Structures Dataset, and National Transportation Dataset;
 USGS Global Ecosystems; U.S. Census Bureau TIGER/Line data; USFS Road data; Natural Earth Data; U.S. Department of State HIU;
 NOAA National Centers for Environmental Information
 World Imagery: Maxar
 World Boundaries and Places: Esri, HERE, Garmin, JPC

PRELIMINARY SITE PLAN & GEN-TIE
GREENWATER
PIERCE CO., WA
CONDITIONAL USE PERMIT



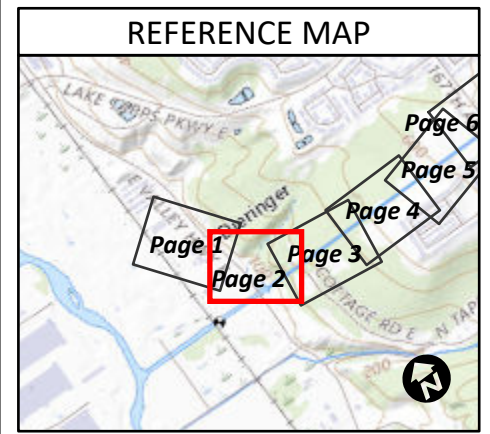
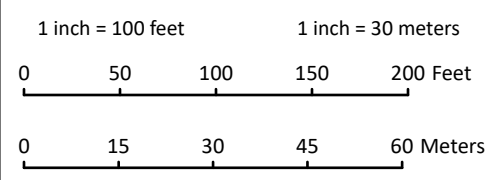
- PROPOSED STRUCTURE
- PROPOSED GEN-TIE
- EXISTING TRANSMISSION LINE
- CITY OF SUMMER BOUNDARY
- PARCEL LINE
- STREAM A
- WETLAND A BOUNDARY
- CITY OF SUMMER WETLAND BUFFER (150-FT)
- COUNTY ROAD
- SITE BOUNDARY

ESRI World Imagery, 2024;
 ESRI World Boundaries and Places, 2024;
 Power Engineers, 2023;
 USGS 3DEP 1m NED, 2020;

Map Developed by BrightNight, 2024;

Information shown on this map is compiled from numerous sources, may not be complete or accurate, is intended for planning only, is not suitable for construction, and is supplied without representations or warranties of any kind.

Date	04/18/2024
Project	GREE
Personnel	Figure Prepared by: BrightNight



Service Layer Credits: World Imagery: Maxar, Microsoft
 World Boundaries and Places: Esri, HERE, Garmin
 USGSTopo: USGS The National Map, National Boundaries Dataset, 3DEP Elevation Program, Geographic Names Information System,
 National Hydrography Dataset, National Land Cover Database, National Structures Dataset, and National Transportation Dataset;
 USGS Global Ecosystems, U.S. Census Bureau TIGER, Line data; USFS Road data; Natural Earth Data; U.S. Department of State HIJ;
 NOAA National Centers for Environmental Information
 World Imagery: Maxar

PRELIMINARY SITE PLAN & GEN-TIE
GREENWATER
PIERCE CO., WA
CONDITIONAL USE PERMIT



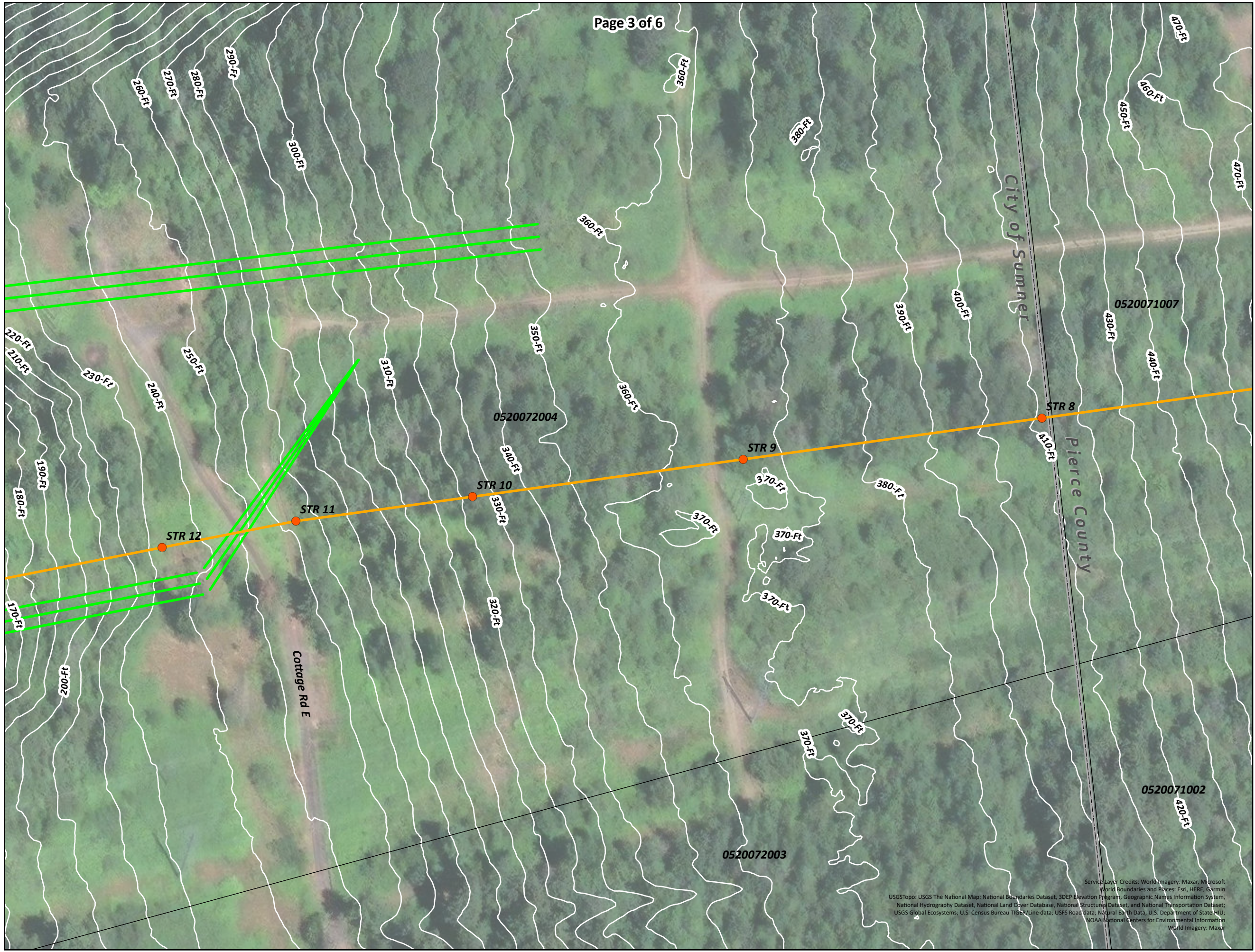
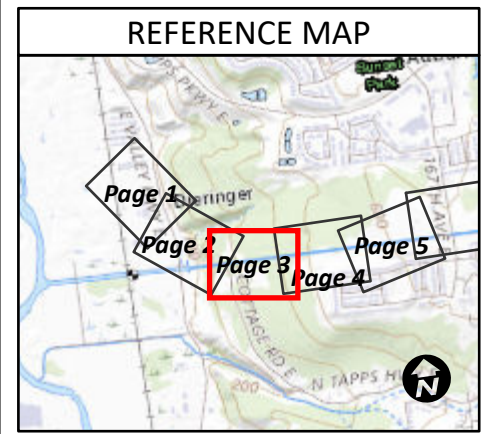
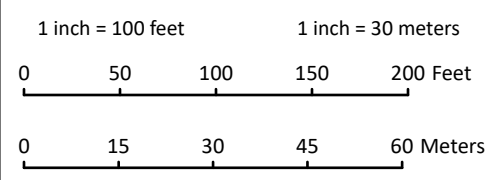
- PROPOSED STRUCTURE
- PROPOSED GEN-TIE
- EXISTING TRANSMISSION LINE
- CITY OF SUMNER BOUNDARY
- PARCEL LINE

ESRI World Imagery, 2024;
 ESRI World Boundaries and Places, 2024;
 Power Engineers, 2023;
 USGS 3DEP 1m NED, 2020;

Map Developed by BrightNight, 2024;

Information shown on this map is compiled from numerous sources, may not be complete or accurate, is intended for planning only, is not suitable for construction, and is supplied without representations or warranties of any kind.

Date	04/18/2024
Project	GREE
Personnel	Figure Prepared by: BrightNight



Service Layer Credits: World Imagery: Maxar, Microsoft
 World Boundaries and Places: Esri, HERE, Garmin
 USGSTopo: USGS The National Map: National Boundaries Dataset, 3DEP Elevation Program, Geographic Names Information System,
 National Hydrography Dataset, National Land Cover Database, National Structures Dataset, and National Transportation Dataset;
 USGS Global Ecosystems; U.S. Census Bureau TIGER/Line data; USFS Road data; Natural Earth Data; U.S. Department of State; HUI;
 NOAA National Centers for Environmental Information
 World Imagery: Maxar

PRELIMINARY SITE PLAN & GEN-TIE
GREENWATER
PIERCE CO., WA
CONDITIONAL USE PERMIT



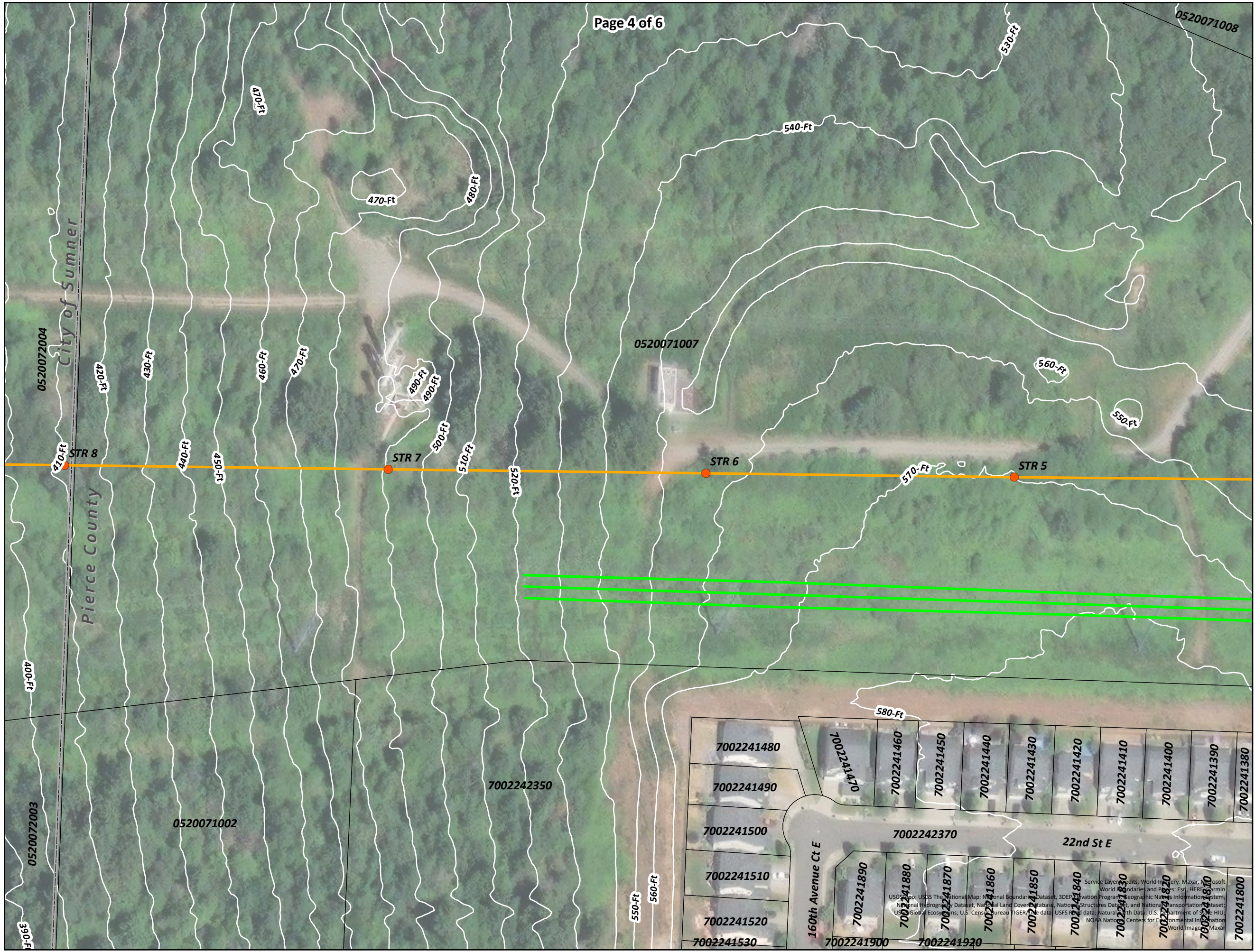
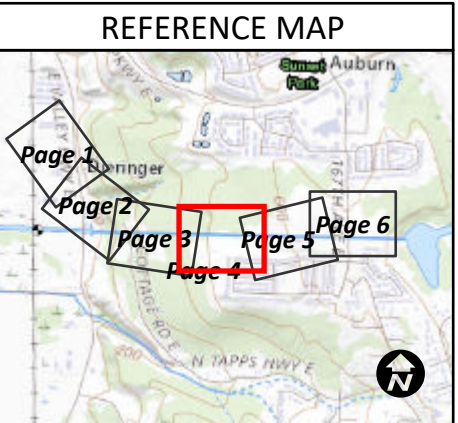
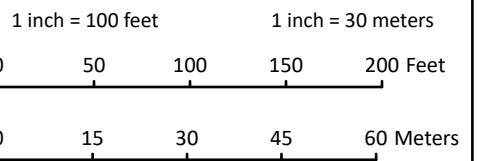
- PROPOSED STRUCTURE
- PROPOSED GEN-TIE
- EXISTING TRANSMISSION LINE
- CITY OF SUMNER BOUNDARY
- PARCEL LINE

ESRI World Imagery, 2024;
 ESRI World Boundaries and Places, 2024;
 Power Engineers, 2023;
 USGS 3DEP 1m NED, 2020;

Map Developed by BrightNight, 2024;

Information shown on this map is compiled from numerous sources, may not be complete or accurate, is intended for planning only, is not suitable for construction, and is supplied without representations or warranties of any kind.

Date	04/18/2024
Project	GREE
Personnel	Figure Prepared by: BrightNight



PRELIMINARY SITE PLAN & GEN-TIE
GREENWATER
PIERCE CO., WA
CONDITIONAL USE PERMIT



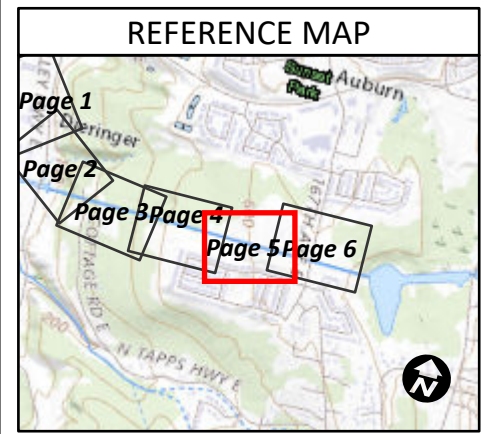
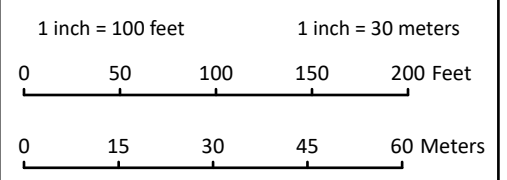
- PROPOSED STRUCTURE
- PROPOSED GEN-TIE
- EXISTING TRANSMISSION LINE
- PARCEL LINE
- POI LOCATION

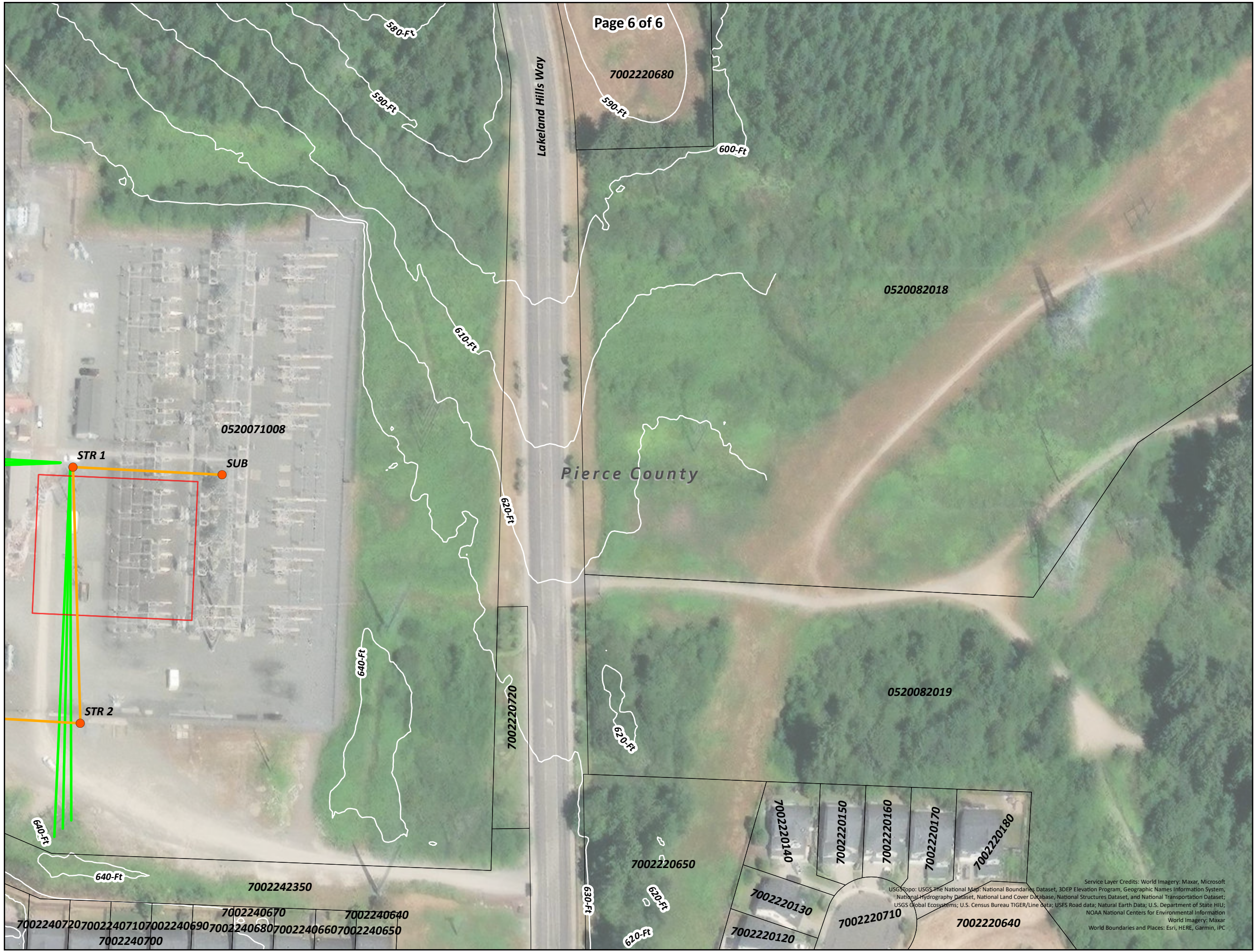
ESRI World Imagery, 2024;
 ESRI World Boundaries and Places, 2024;
 Power Engineers, 2023;
 USGS 3DEP 1m NED, 2020;

Map Developed by BrightNight, 2024;

Information shown on this map is compiled from numerous sources, may not be complete or accurate, is intended for planning only, is not suitable for construction, and is supplied without representations or warranties of any kind.

Date	04/18/2024
Project	GREE
Personnel	Figure Prepared by: BrightNight





Page 6 of 6

PRELIMINARY SITE PLAN & GEN-TIE
GREENWATER
 PIERCE CO., WA
 CONDITIONAL USE PERMIT



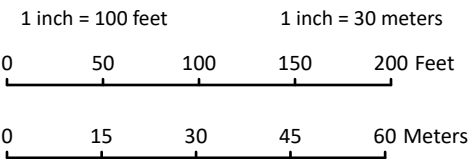
- PROPOSED STRUCTURE
- PROPOSED GEN-TIE
- EXISTING TRANSMISSION LINE
- PARCEL LINE
- POI LOCATION

ESRI World Imagery, 2024;
 ESRI World Boundaries and Places, 2024;
 Power Engineers, 2023;
 USGS 3DEP 1m NED, 2020;

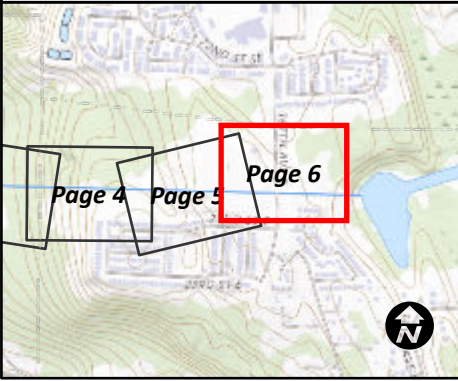
Map Developed by BrightNight, 2024;

Information shown on this map is compiled from numerous sources, may not be complete or accurate, is intended for planning only, is not suitable for construction, and is supplied without representations or warranties of any kind.

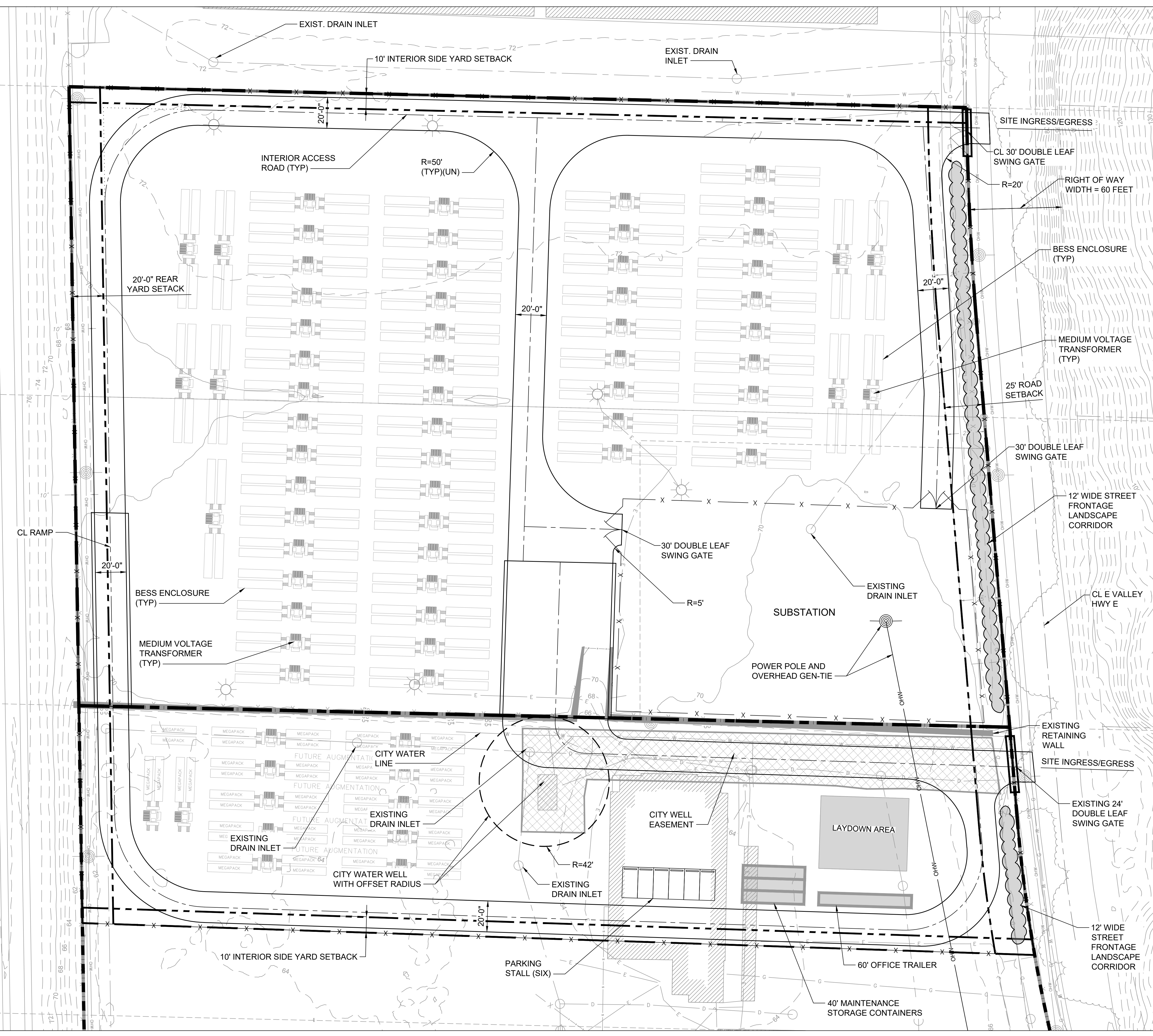
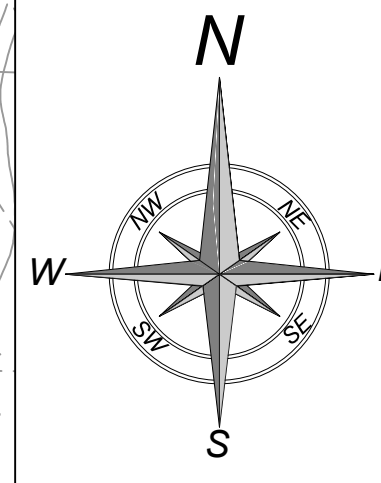
Date	04/18/2024
Project	GREE
Personnel	Figure Prepared by: BrightNight



REFERENCE MAP



Service Layer Credits: World Imagery: Maxar, Microsoft
 USGS Topo: USGS The National Map, National Boundaries Dataset, 3DEP Elevation Program, Geographic Names Information System,
 National Hydrography Dataset, National Land Cover Database, National Structures Dataset, and National Transportation Dataset;
 USGS Global Ecosystems; U.S. Census Bureau TIGER/Line data; USFS Road data; Natural Earth Data; U.S. Department of State HIJ;
 NOAA National Centers for Environmental Information
 World Imagery: Maxar
 World Boundaries and Places: Esri, HERE, Garmin, iPC





Notes:

1. ALL WORK DONE BY CONTRACTOR/INSTALLER PURSUANT TO THIS DRAWING SHALL:
 - (A) CONFORM TO THE GOVERNING CONTRACT DOCUMENTS;
 - (B) BE PERFORMED EXCLUSIVELY BY ITS TRAINED, COMPETENT PERSONNEL, OR, WHERE PERMITTED, THAT OF ITS SUBCONTRACTOR(S);
 - (C) COMPLY WITH ALL APPLICABLE SAFETY LAWS, REGULATIONS, PROGRAMS AND PRACTICES TO ENSURE THE SAFETY OF ALL PEOPLE LOCATED ON THE WORK SITE, INCLUDING THE CONTRACTOR'S/ INSTALLER'S PERSONNEL (OR THAT OF ITS SUBCONTRACTOR(S)) PERFORMING THE WORK.
2. UNDERGROUND OR EMBEDDED UTILITIES MAY EXIST WITHIN THE AREA OF AND ADJACENT TO THE LIMITS OF THE WORK. THE LOCATION OR IDENTIFICATION OF SUCH UTILITIES HAS NOT BEEN VERIFIED BY OWNER OR BY S&L. CONTRACTOR/INSTALLER IS RESPONSIBLE FOR FIELD LOCATING AND IDENTIFYING UNDERGROUND OR EMBEDDED UTILITIES AND ANY OTHER UNDERGROUND OR EMBEDDED UTILITY DIMENSIONS.
3. CONTRACTOR/INSTALLER SHALL TAKE ALL APPROPRIATE PRECAUTIONS TO ENSURE THE SAFETY OF ALL PEOPLE LOCATED ON THE WORK SITE, INCLUDING CONTRACTOR'S/INSTALLER'S PERSONNEL (OR THAT OF ITS SUB-CONTRACTOR(S)) PERFORMING THE WORK.

LEGEND:

FENCE — x — x —

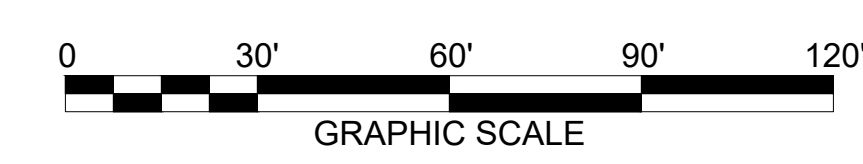
DATE	REV.	REVISION HISTORY	DRN. BY	CKD. BY	APPD. BY
2024-04-04	03	FOR PERMIT	CF	DP	--
2024-03-29	02	FOR PERMIT	CF	DP	--
2024-03-27	01	FOR PERMIT	CF	DP	--
2024-03-22	00	FOR PERMIT	CF	DP	--

 **Sargent & Lundy**
 **BrightNight Power**

PROJECT NAME GREENWATER

C-001	GREENWATER BESS PROJECT
-------	-------------------------

SCALE	PURPOSE CODE	SHEET SIZE	REV.	SHEET
1" = 30'-0"	PERMIT	36" x 24"	03	1 OF 1



NOTE:
1. All rights reserved. This drawing contains proprietary information which is protected by copyright. No part of this drawing may be reproduced, translated in computer language, or transmitted in any form whatsoever without the prior written consent of BrightNight Power