



TOPOGRAPHIC
MAPS

Project Property: Greenwater Storage
2120 Lakeland Hills Way
Sumner WA 98390

Project No: 81237631

Requested By: Terracon

Order No: 23120500932

Date Completed: December 06, 2023

REVIEW #2
SEPA-2024-0001

Environmental Risk Information Services
A division of Glacier Media Inc.
1.866.517.5204 | info@erisinfo.com | erisinfo.com

We have searched USGS collections of current topographic maps and historical topographic maps for the project property. Below is a list of maps found for the project property and adjacent area. Maps are from 7.5 and 15 minute topographic map series, if available.

Year	Map Series
1942	15
1944	15
1956	7.5
1968	7.5
1973	7.5
1993	7.5
2017	7.5
2020	7.5

Topographic Map Symbolology for the maps may be available in the following documents:

Pre-1947

[Page 223 of 1918 Topographic Instructions](#)

[Page 130 of 1928 Topographic Instructions](#)

1947-2009

[Topographic Map Symbols](#)

2009-present

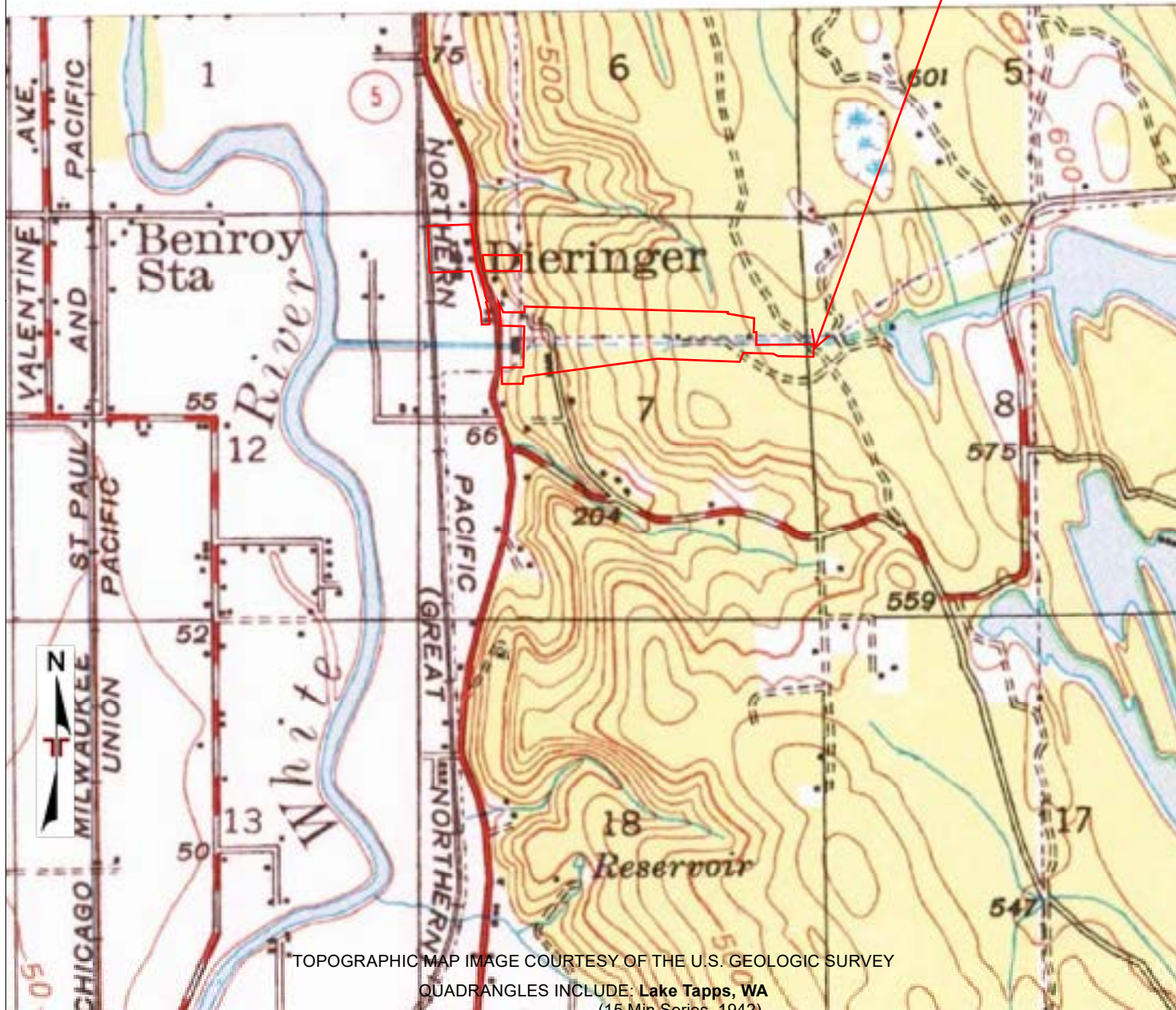
[US Topo Map Symbols](#)

Topographic Maps included in this report are produced by the USGS and are to be used for research purposes including a phase I report. Maps are not to be resold as commercial property.

No warranty of Accuracy or Liability for ERIS: The information contained in this report has been produced by ERIS Information Inc.(in the US) and ERIS Information Limited Partnership (in Canada), both doing business as 'ERIS', using Topographic Maps produced by the USGS.

This maps contained herein does not purport to be and does not constitute a guarantee of the accuracy of the information contained herein. Although ERIS has endeavored to present you with information that is accurate, ERIS disclaims, any and all liability for any errors, omissions, or inaccuracies in such information and data, whether attributable to inadvertence, negligence or otherwise, and for any consequences arising therefrom. Liability on the part of ERIS is limited to the monetary value paid for this report.

SITE

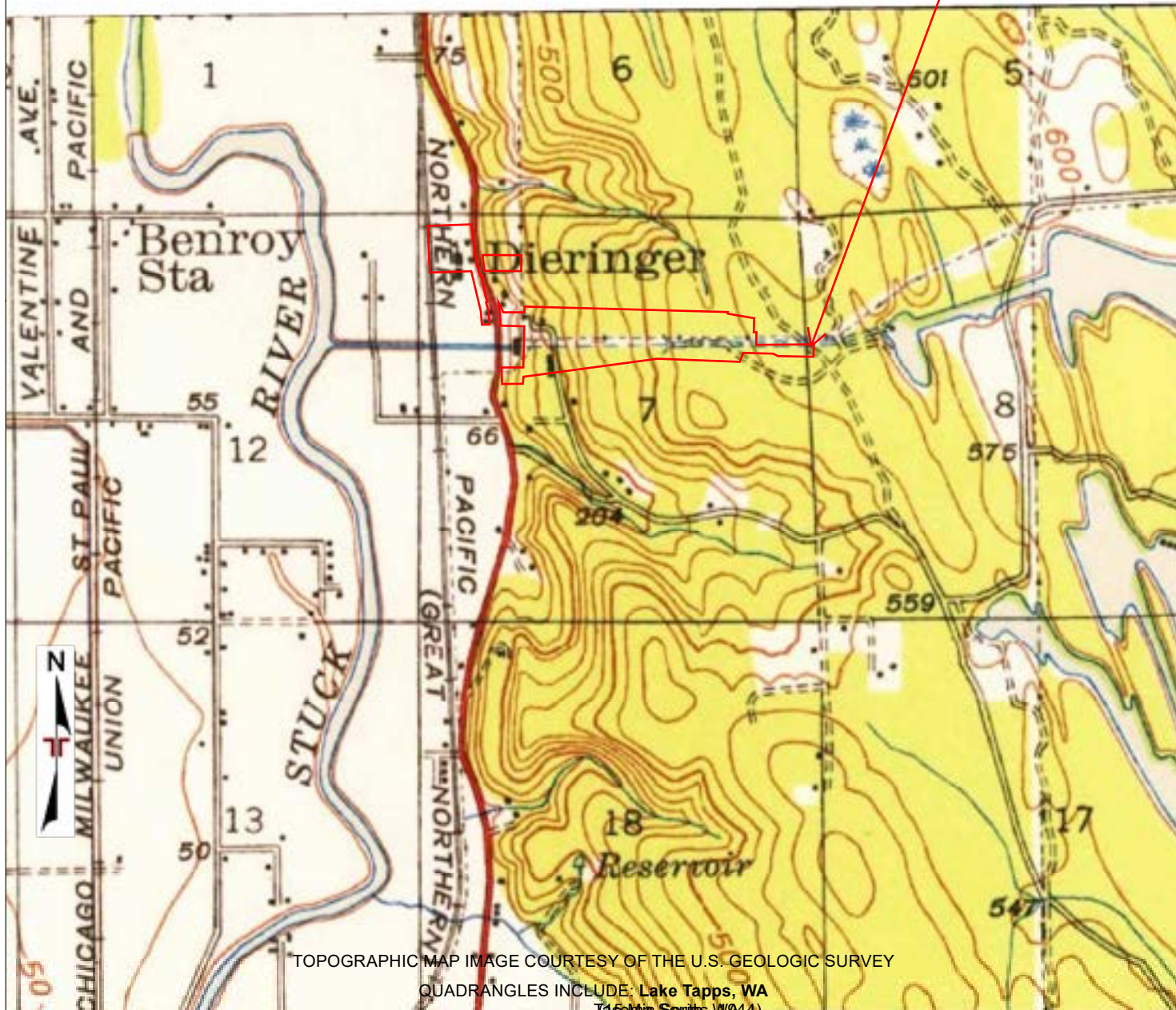


Project Manager:	Project No:
Drawn By:	Scale:
Checked By:	File Name:
Approved By:	Date:



TOPOGRAPHIC MAP (1942)	

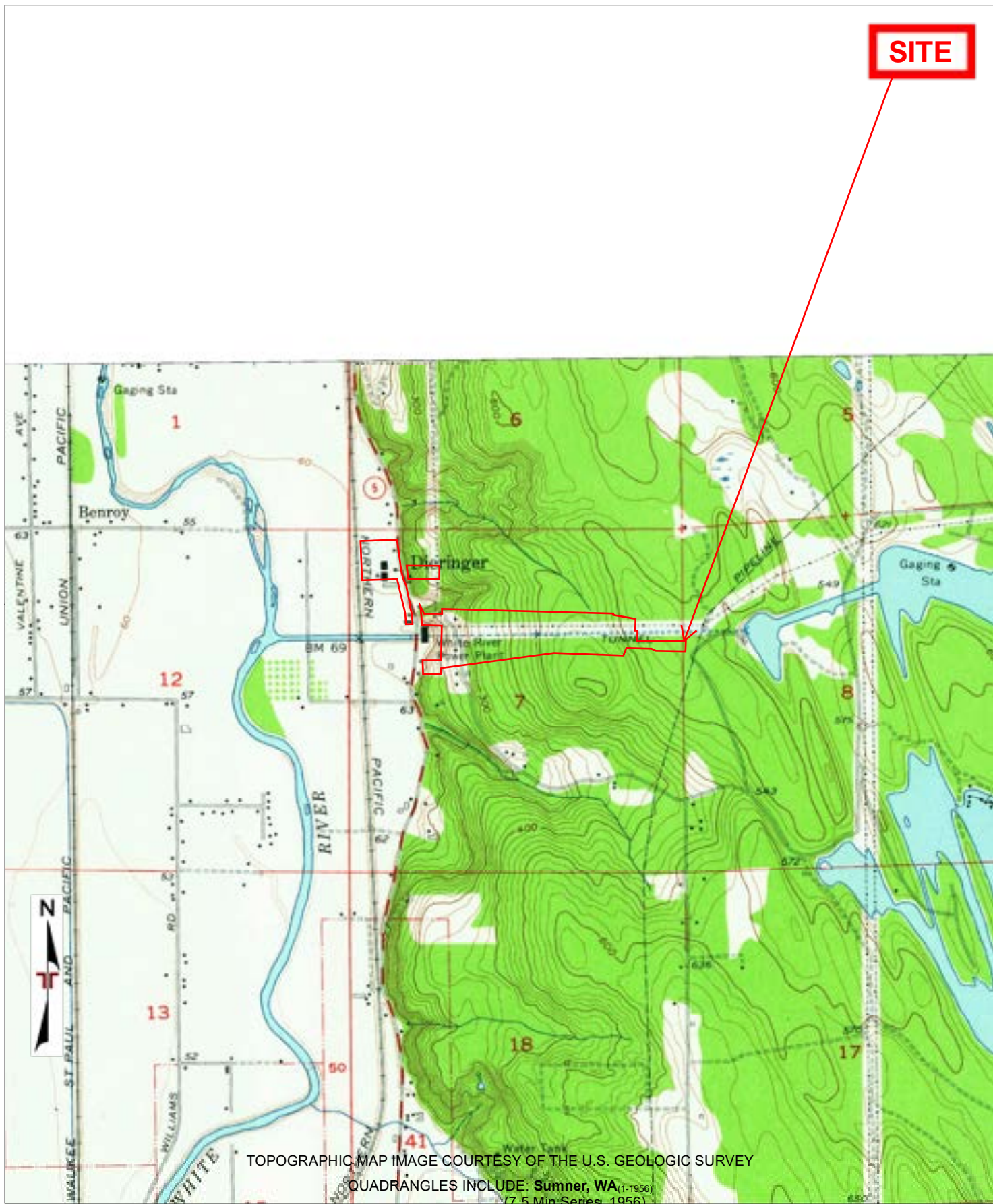
SITE



TOPOGRAPHIC MAP IMAGE COURTESY OF THE U.S. GEOLOGIC SURVEY
 QUADRANGLES INCLUDE: Lake Tapps, WA
 (16 Miles South, W044).

Project Manager:	Project No:		TOPOGRAPHIC MAP (1944)	
Drawn By:	Scale:			
Checked By:	File Name:			
Approved By:	Date:			

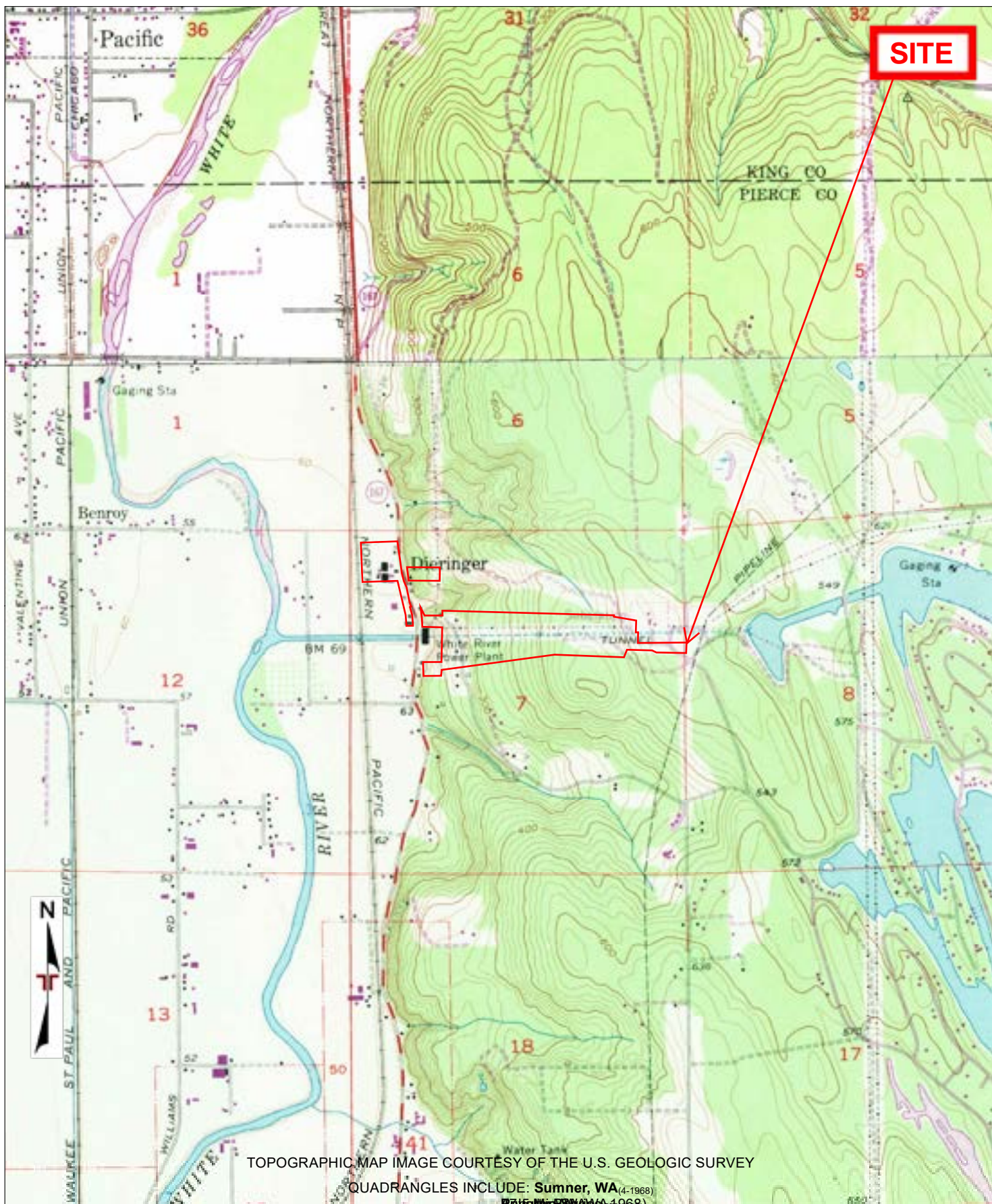
SITE



Project Manager:	Project No:
Drawn By:	Scale:
Checked By:	File Name:
Approved By:	Date:



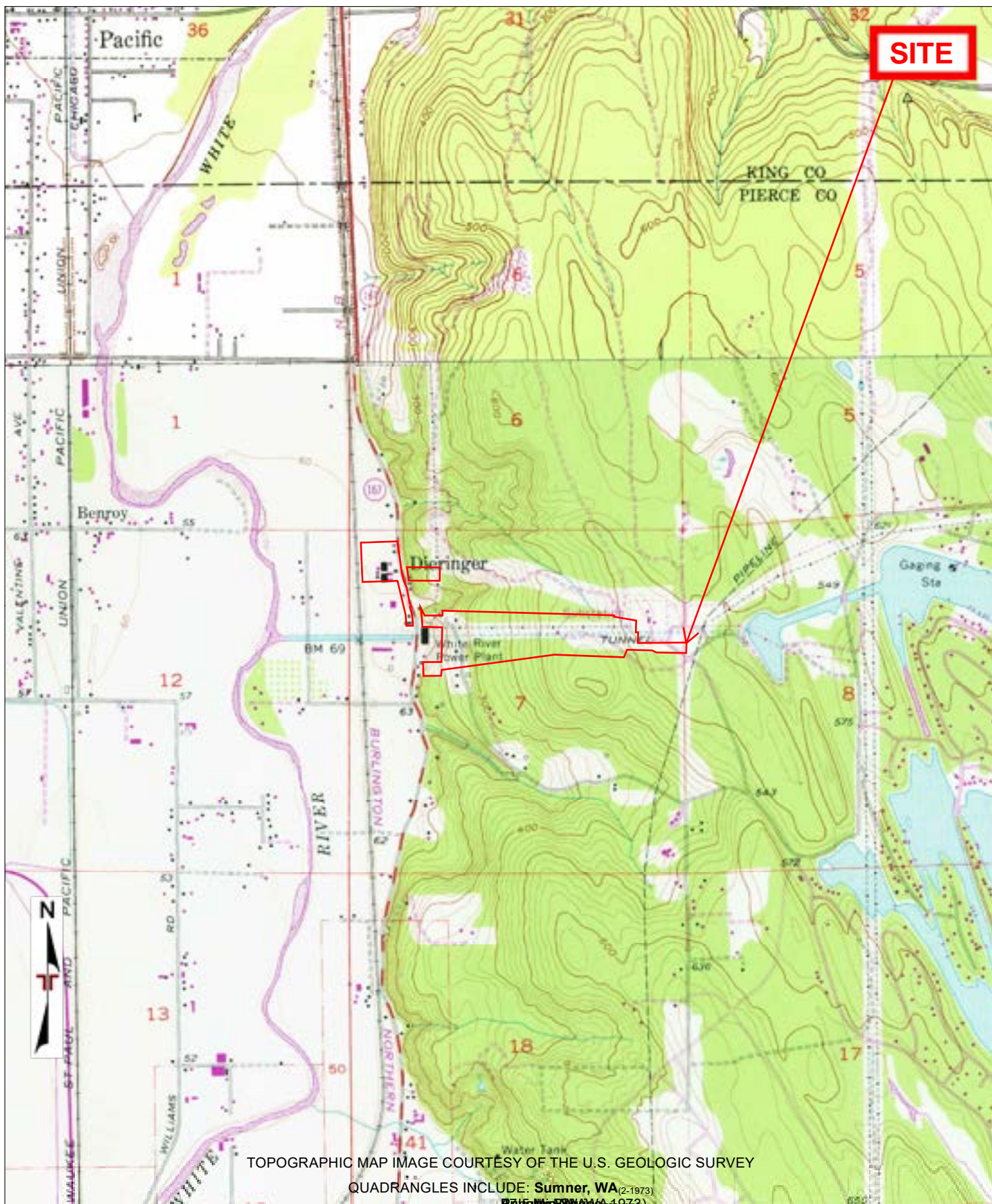
TOPOGRAPHIC MAP (1956)	



Project Manager:	Project No:
Drawn By:	Scale:
Checked By:	File Name:
Approved By:	Date:



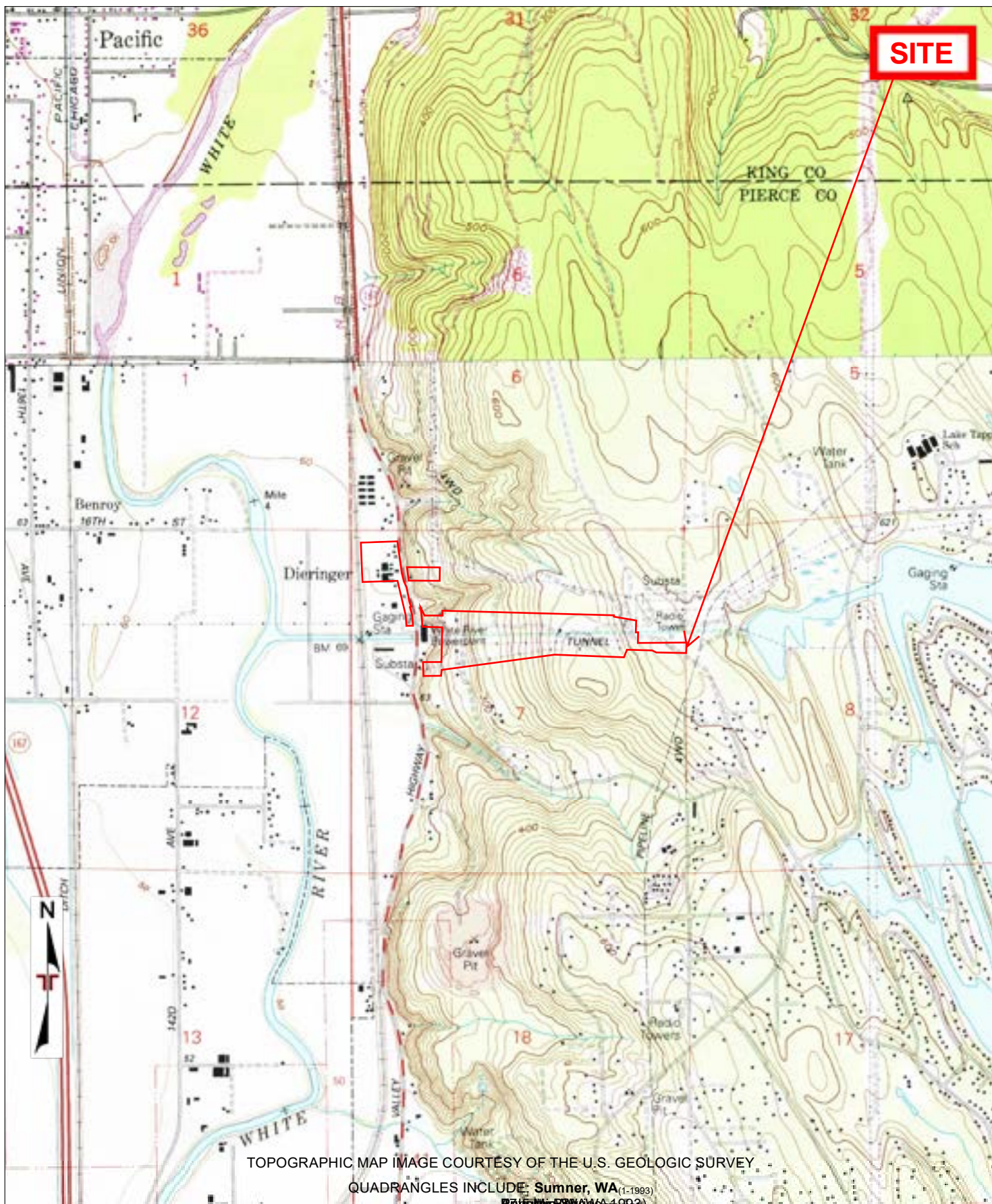
TOPOGRAPHIC MAP (1968)	



Project Manager:	Project No:
Drawn By:	Scale:
Checked By:	File Name:
Approved By:	Date:



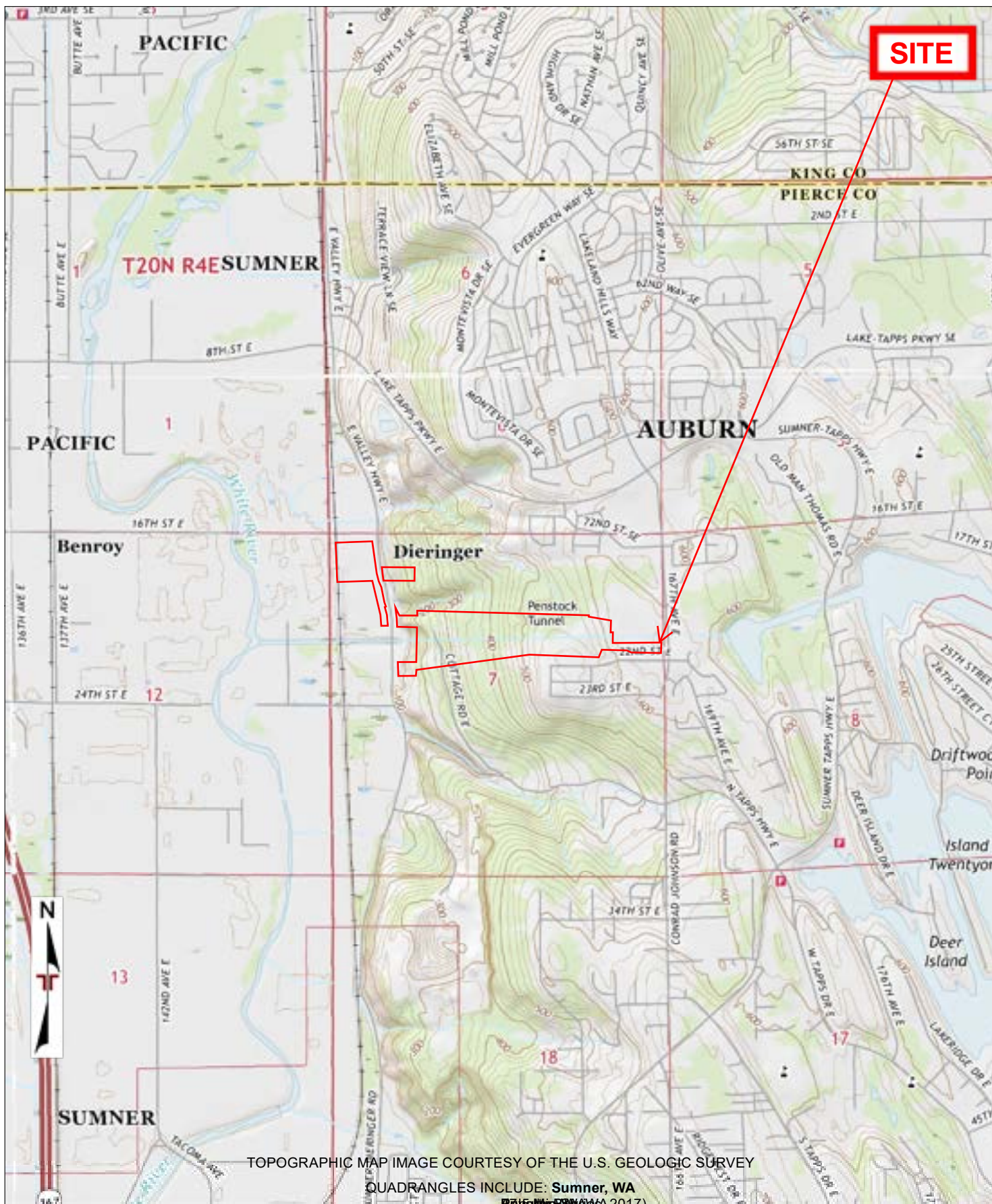
TOPOGRAPHIC MAP (1973)	



Project Manager:	Project No:
Drawn By:	Scale:
Checked By:	File Name:
Approved By:	Date:



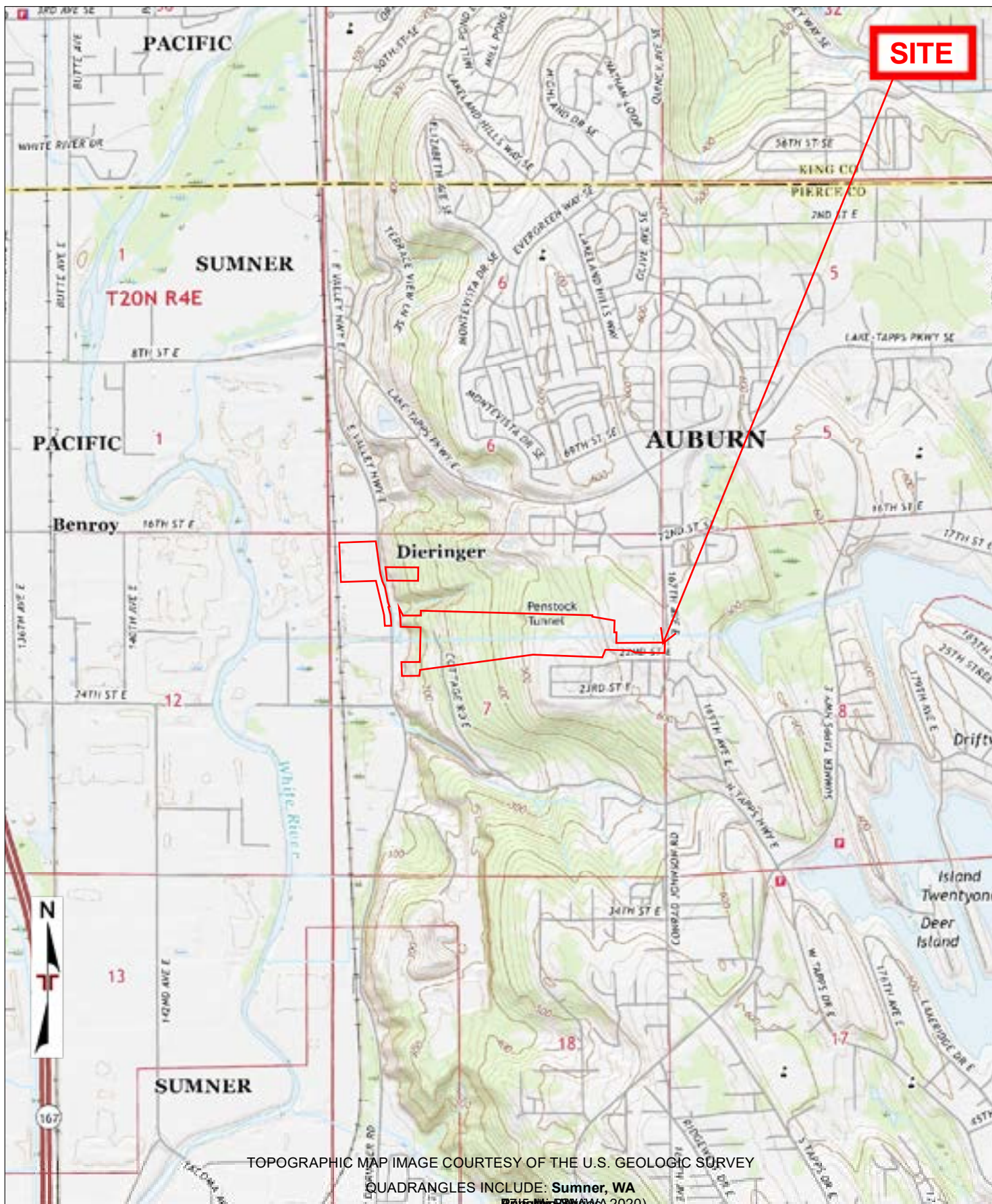
TOPOGRAPHIC MAP (1993)	



Project Manager:	Project No:
Drawn By:	Scale:
Checked By:	File Name:
Approved By:	Date:



TOPOGRAPHIC MAP (2017)



TOPOGRAPHIC MAP IMAGE COURTESY OF THE U.S. GEOLOGIC SURVEY

QUADRANGLES INCLUDE: Sumner, WA

Range 14E, T20N R4E (2020).

Project Manager:	Project No:		TOPOGRAPHIC MAP (2020)
Drawn By:	Scale:		
Checked By:	File Name:		
Approved By:	Date:		