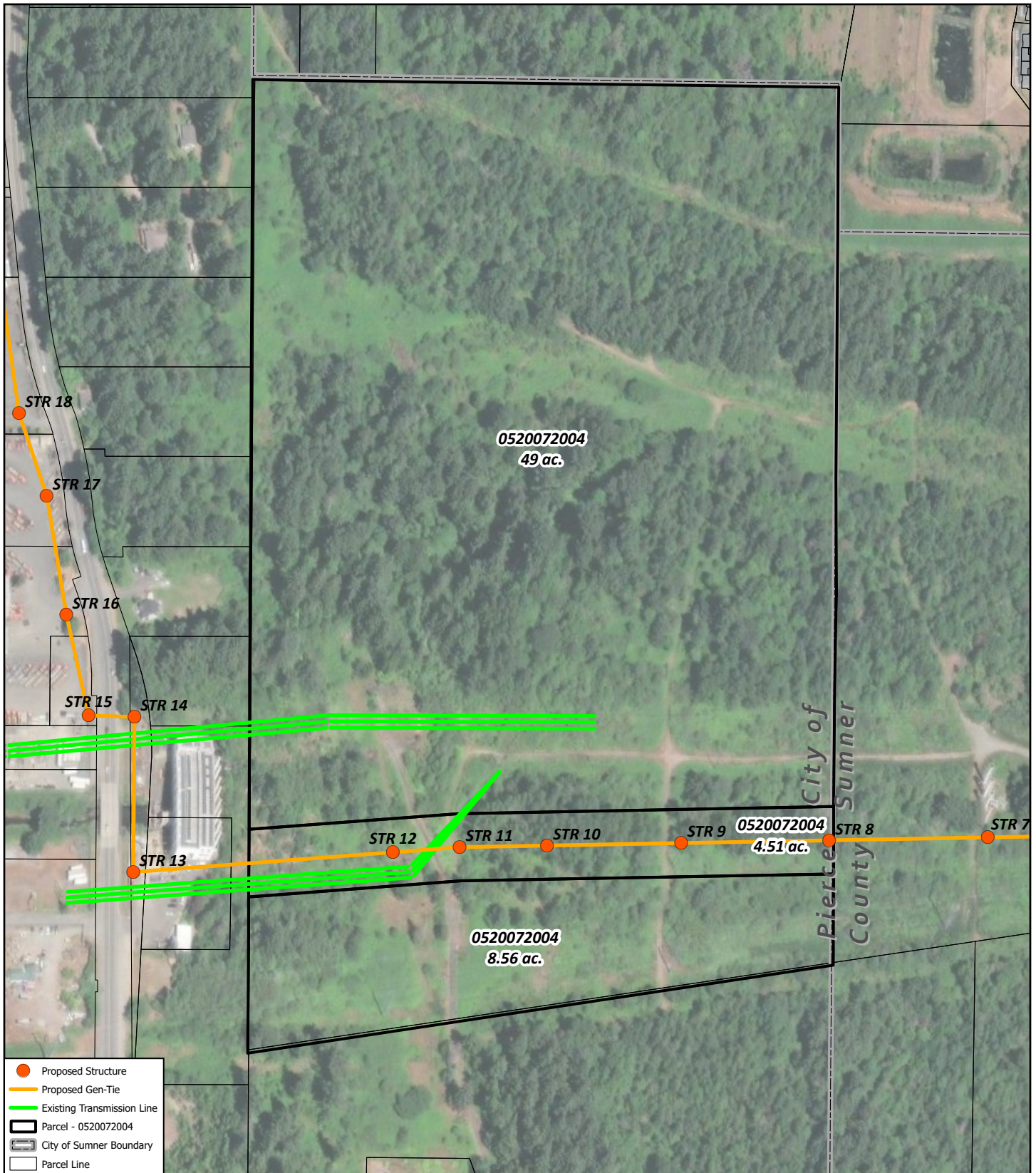


Attachment A
Site Plan for CUP Parcel
and
Site Plan for Entire Project



SITE PLAN - 0520072004
CASCADE WATER ALLIANCE
 Pierce Co., WA

Project: GREE Date: 06/14/2024

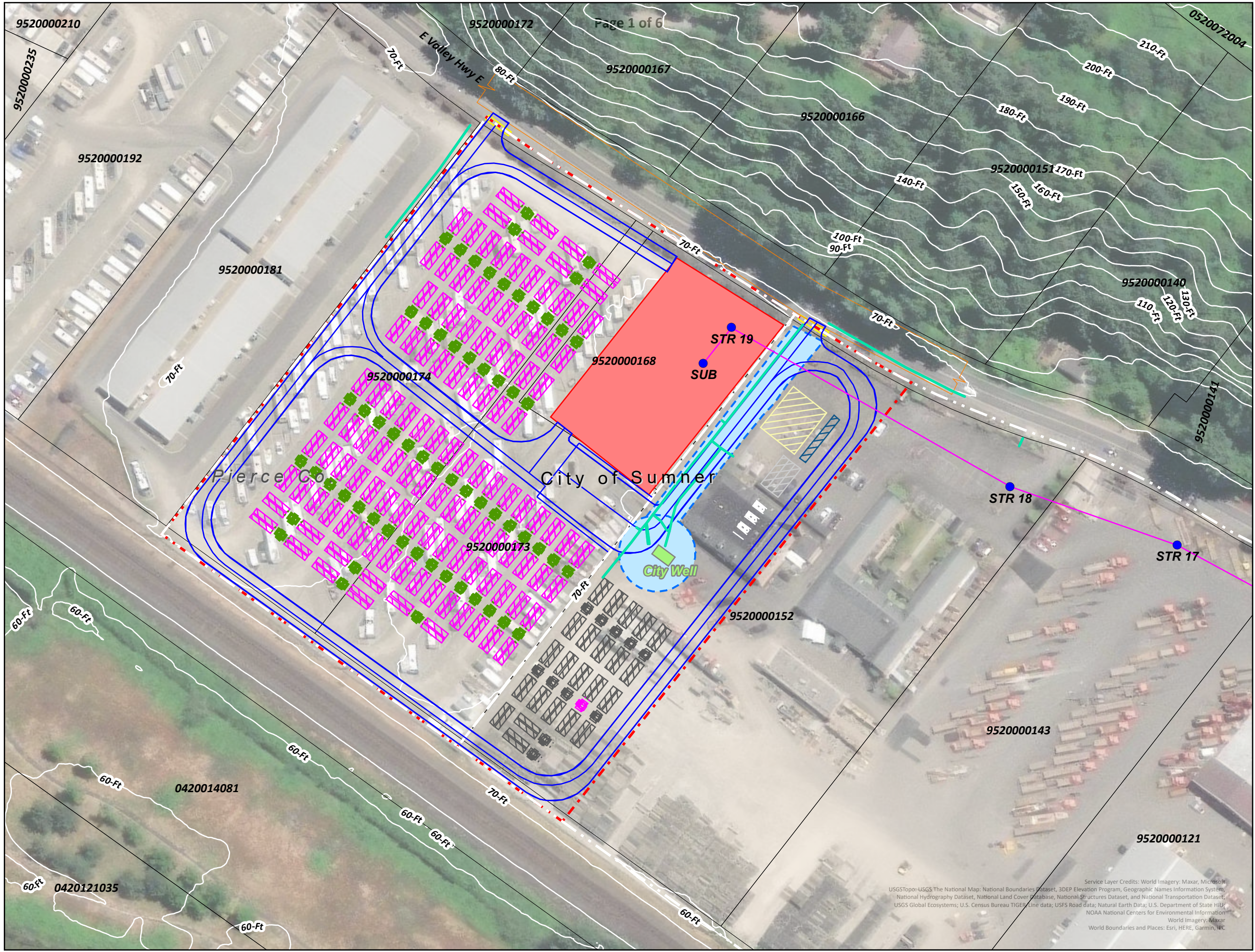


Figure:
N/A



1 inch = 450 feet
 0 112.5 225 450 675 Feet





PRELIMINARY SITE PLAN & GEN-TIE
GREENWATER
 PIERCE CO., WA
 CONDITIONAL USE PERMIT



- Util - Water
- GEN TIE STRUCTURES
- ACCESS ROADS
- GEN-TIE LINE
- PARKING AREA
- ACCESS GATE
- ACCESS ROADS
- AUGMENTATION
- BATTERY SKID
- CITY WELL
- COUNTY ROAD
- FENCE
- LAY-DOWN AREA
- MAINTENANCE STORAGE CONTAINERS
- OFFICE TRAILER
- PARKING AREA
- PROPOSED PROJECT SUBSTATION AREA
- SITE BOUNDARY
- TRANSFORMER
- Well Protection Zone - 42-Ft Radius
- City Well and Water Main Protection Zone
- City of Sumner Boundary
- Parcel Line

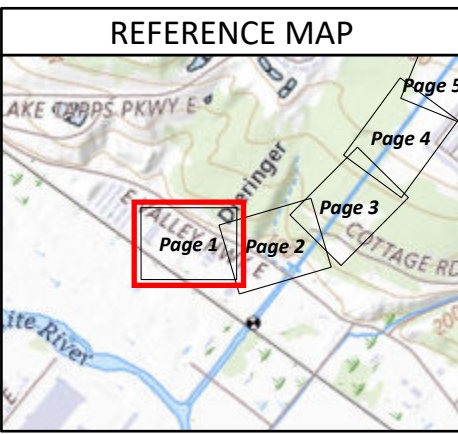
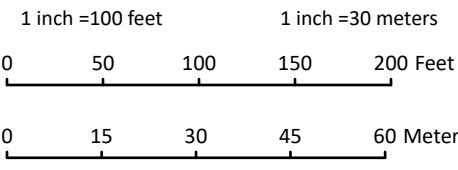
ESRI World Imagery, 2024;
 ESRI World Boundaries and Places, 2024;
 Power Engineers, 2024; Encompass, 2024;
 Sargent and Lundy, 2024;
 USGS 3DEP 1m NED, 2020;

SSE Design Layout:
 20240618-US-WA-GREE-FIP-BESSL-NG-V00-R16.dwg

Map Developed by BrightNight, 2024;

Information shown on this map is compiled from numerous sources, may not be complete or accurate, is intended for planning only, is not suitable for construction, and is supplied without representations or warranties of any kind.

Date	06/18/2024
Project	GREE
Personnel	Figure Prepared by BrightNight



Service Layer Credits: World Imagery: Maxar, Microsoft
 USGSTopo-USGS The National Map; National Boundaries Dataset, 3DEP Elevation Program, Geographic Names Information System,
 National Hydrography Dataset, National Land Cover Database, National Structures Dataset, and National Transportation Dataset;
 USGS Global Ecosystems; U.S. Census Bureau TIGER/Line data; USFS Road data; Natural Earth Data; U.S. Department of State HILY;
 NOAA National Centers for Environmental Information
 World Imagery: Maxar
 World Boundaries and Places: Esri, HERE, Garmin, IFC

PRELIMINARY SITE PLAN & GEN-TIE
GREENWATER
PIERCE CO., WA
CONDITIONAL USE PERMIT



- Util - Water
- GEN TIE STRUCTURES
- GEN-TIE LINE
- COUNTY ROAD
- SITE BOUNDARY
- City of Summer Boundary
- Parcel Line
- Stream A
- Wetland A Boundary
- City of Summer Wetland Buffer (150-Ft)

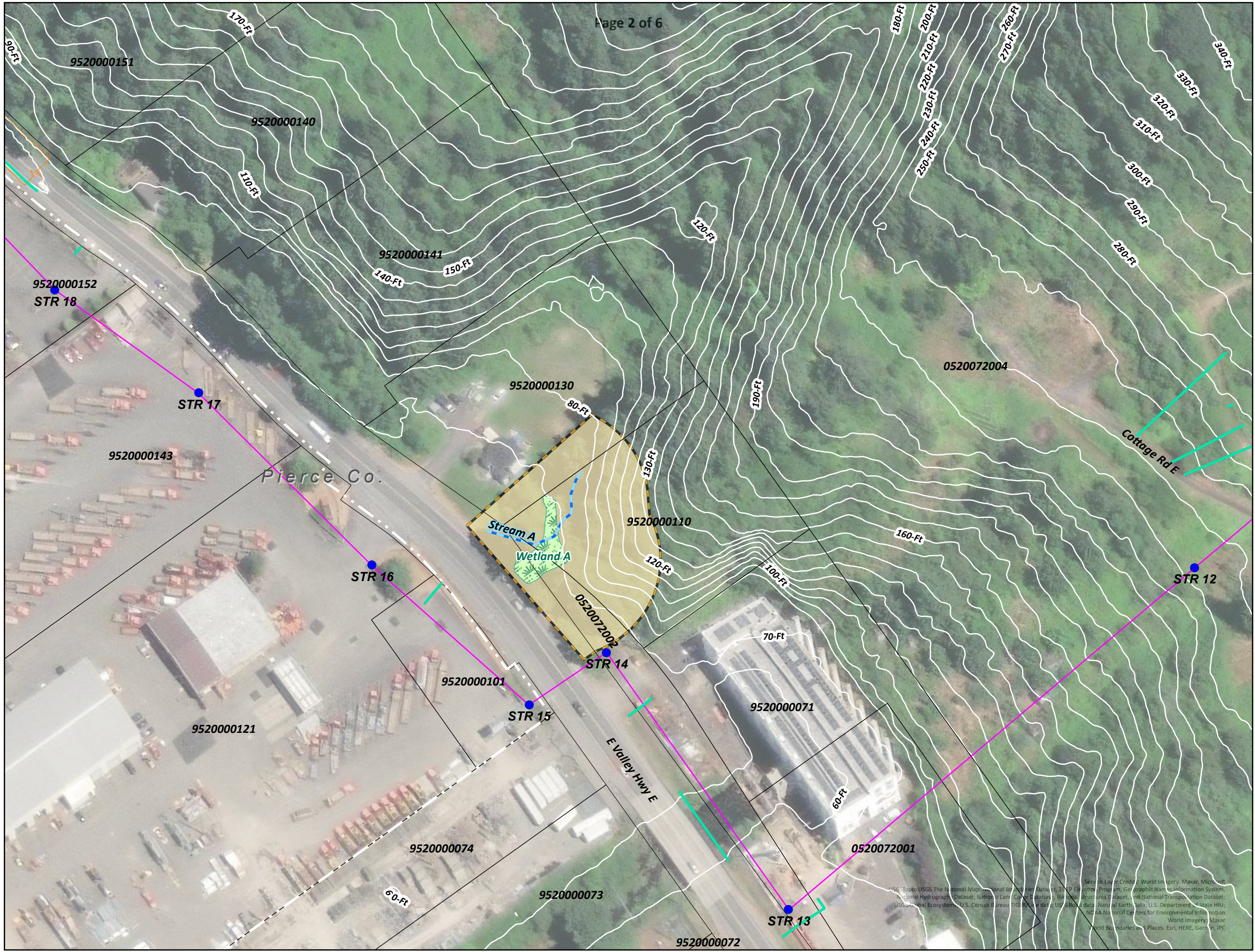
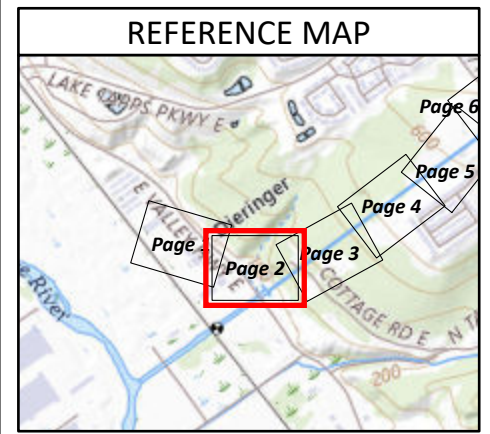
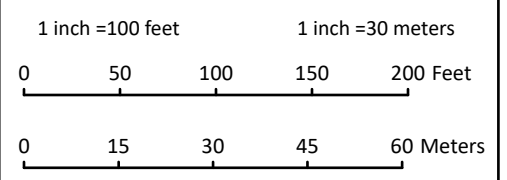
ESRI World Imagery, 2024;
ESRI World Boundaries and Places, 2024;
Power Engineers, 2024; Encompass, 2024;
Sargent and Lundy, 2024;
USGS 3DEP 1m NED, 2020;

SSE Design Layout:
20240618-US-WA-GREE-FIP-BESSI-NG-V00-R16.dwg

Map Developed by BrightNight, 2024;

Information shown on this map is compiled from numerous sources, may not be complete or accurate, is intended for planning only, is not suitable for construction, and is supplied without representations or warranties of any kind.

Date	06/18/2024
Project	GREE
Personnel	Figure Prepared by BrightNight



Source: Esri, DeLorme, Garmin, World Imagery, Maxar, Microsoft, USGS Topo, USGS The National Map, National Boundary Dataset, 3DEP Elevation Program, Geographic Names Information System, National Hydrography Dataset, National Land Cover Database, National Structures Dataset, and National Transportation Dataset; USGS Global Ecosystems; U.S. Census Bureau TIGER; USGS Real-time data; Natural Earth Data; U.S. Department of State HUI; NOAA National Centers for Environmental Information; World Imagery; Maxar World Boundaries and Places; Esri, HERE, Garmin, IPC

PRELIMINARY SITE PLAN & GEN-TIE
GREENWATER
PIERCE CO., WA
CONDITIONAL USE PERMIT



- Util - Water
- GEN TIE STRUCTURES
- GEN-TIE LINE
- City of Sumner Boundary
- Parcel Line

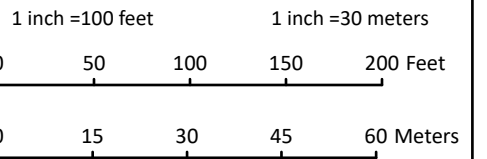
ESRI World Imagery, 2024;
ESRI World Boundaries and Places, 2024;
Power Engineers, 2024; Encompass, 2024;
Sargent and Lundy, 2024;
USGS 3DEP 1m NED, 2020;

SSE Design Layout:
20240618-US-WA-GREE-FIP-BESSL-NG-V00-R16.dwg

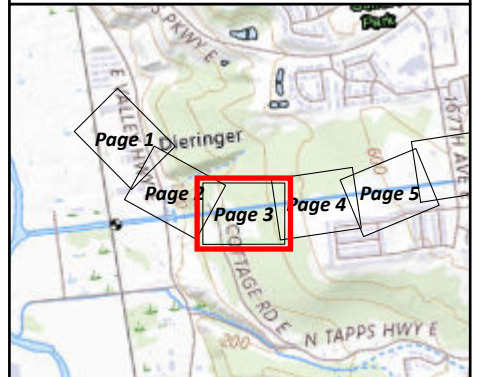
Map Developed by BrightNight, 2024;

Information shown on this map is compiled from numerous sources, may not be complete or accurate, is intended for planning only, is not suitable for construction, and is supplied without representations or warranties of any kind.

Date	06/18/2024
Project	GREE
Personnel	Figure Prepared by BrightNight



REFERENCE MAP



Service Layer Credits: World Imagery: Maxar, Microsoft
USGS Topo: USGS The National Map: National Boundaries Dataset, 3DEP Elevation Program, Geographic Names Information System,
National Hydrography Dataset, National Land Cover Database, National Structure Dataset, and National Transportation Dataset;
USGS Global Ecosystems; U.S. Census Bureau TIGER/Line data; USFS Road data; Natural Earth Data: U.S. Department of State HII;
NOAA National Centers for Environmental Information
World Imagery: Maxar
World Boundaries and Places: Esri HERE, Garmin, iBT



PRELIMINARY SITE PLAN & GEN-TIE
GREENWATER
 PIERCE CO., WA
 CONDITIONAL USE PERMIT



- GEN TIE STRUCTURES
- GEN-TIE LINE
- City of Sumner Boundary
- Parcel Line

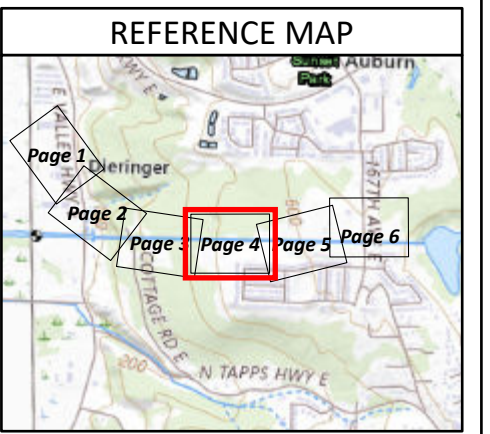
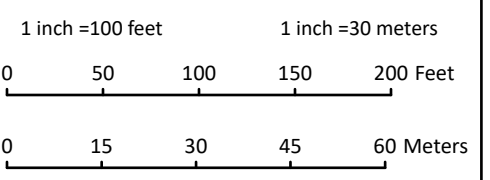
ESRI World Imagery, 2024;
 ESRI World Boundaries and Places, 2024;
 Power Engineers, 2024; Encompass, 2024;
 Sargent and Lundy, 2024;
 USGS 3DEP 1m NED, 2020;

SSE Design Layout:
 20240618-US-WA-GREE-FIP-BESSL-NG-V00-R16.dwg

Map Developed by BrightNight, 2024;

Information shown on this map is compiled from numerous sources, may not be complete or accurate, is intended for planning only, is not suitable for construction, and is supplied without representations or warranties of any kind.

Date	06/18/2024
Project	GREE
Personnel	Figure Prepared by BrightNight



PRELIMINARY SITE PLAN & GEN-TIE
GREENWATER
PIERCE CO., WA
CONDITIONAL USE PERMIT



- GEN-TIE STRUCTURES
- GEN-TIE LINE
- POI LOCATION
- Parcel Line

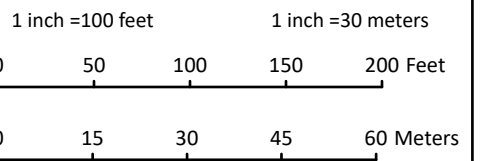
ESRI World Imagery, 2024;
ESRI World Boundaries and Places, 2024;
Power Engineers, 2024; Encompass, 2024;
Sargent and Lundy, 2024;
USGS 3DEP 1m NED, 2020;

SSE Design Layout:
20240618-US-WA-GREE-FIP-BESSL-NG-V00-R16.dwg

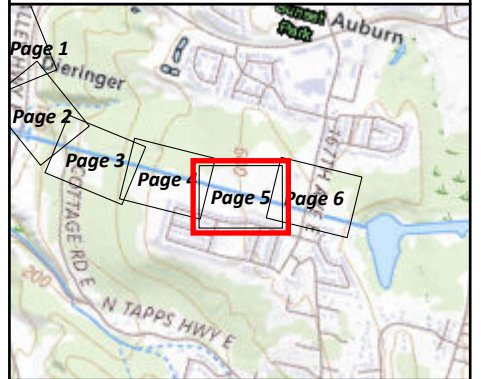
Map Developed by BrightNight, 2024;

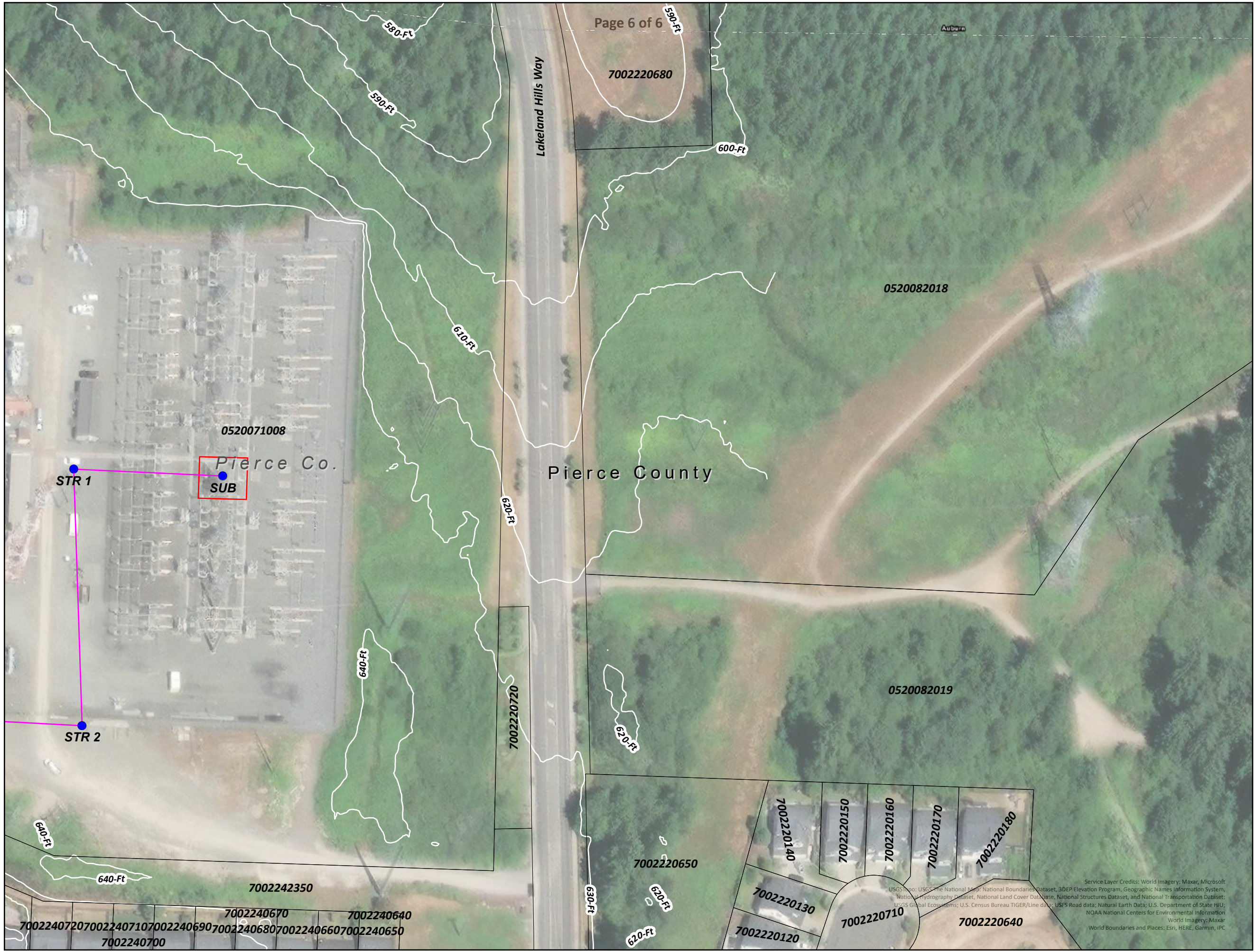
Information shown on this map is compiled from numerous sources, may not be complete or accurate, is intended for planning only, is not suitable for construction, and is supplied without representations or warranties of any kind.

Date	06/18/2024
Project	GREE
Personnel	Figure Prepared by BrightNight



REFERENCE MAP





PRELIMINARY SITE PLAN & GEN-TIE
GREENWATER
 PIERCE CO., WA
 CONDITIONAL USE PERMIT



- GEN TIE STRUCTURES
- GEN-TIE LINE
- POI LOCATION
- Parcel Line

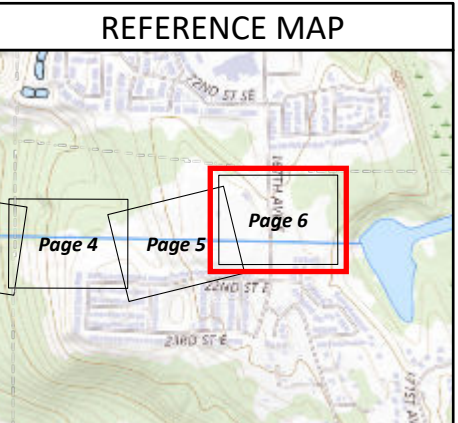
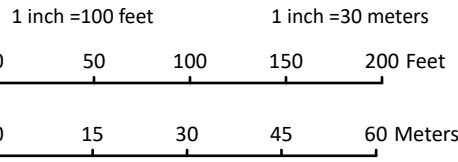
ESRI World Imagery, 2024;
 ESRI World Boundaries and Places, 2024;
 Power Engineers, 2024; Encompass, 2024;
 Sargent and Lundy, 2024;
 USGS 3DEP 1m NED, 2020;

SSE Design Layout:
 20240618-US-WA-GREE-FIP-BESSL-NG-V00-R16.dwg

Map Developed by BrightNight, 2024;

Information shown on this map is compiled from numerous sources, may not be complete or accurate, is intended for planning only, is not suitable for construction, and is supplied without representations or warranties of any kind.

Date	06/18/2024
Project	GREE
Personnel	Figure Prepared by BrightNight



Service Layer Credits: World Imagery: Maxar, Microsoft
 USGS: USGS The National Map, National Boundaries Dataset, 3DEP Elevation Program, Geographic Names Information System,
 National Hydrography Dataset, National Land Cover Database, National Structures Dataset, and National Transportation Dataset;
 USGS Global Ecosystems; U.S. Census Bureau TIGER/Line data; USFS Road data; Natural Earth Data; U.S. Department of State HIU;
 NOAA National Centers for Environmental Information
 World Imagery: Maxar
 World Boundaries and Places: Esri, HERE, Garmin, IPC