

ELECTRICAL LEGEND

SYMBOL	DESCRIPTION
LIGHTING	
	DOUBLE HEAD PARKING +PED LED LIGHT POLE FIXTURE
	PROMENADE PEDESTRIAN LED LIGHT POLE FIXTURE
	LARGE METAL CATENARY CIRCLE PENDANT MOUNT LED LIGHT
	GROUND MOUNTED UPLIGHT LED LIGHT FIXTURE
RECEPTACLES	
	DUPLEX RECEPTACLE
	DUPLEX RECEPTACLE (G INDICATES GROUND FAULT CIRCUIT INTERRUPTER)
	FOURPLEX RECEPTACLE
EQUIPMENT AND WIRING	
	CONDUIT STUB OUT (PROVIDE CONCRETE MARKER ON EXTERIOR)
	DEDICATED CONDUIT HOMERUN TO PANEL & CIRCUIT NUMBERS AS INDICATED ON PLANS
	RACEWAY CONCEALED IN WALL OR CEILING
	RACEWAY CONCEALED UNDERGROUND OR UNDER FLOOR SLAB
	MARKS INDICATE NUMBER OF #12 AWG UNLESS NOTED OTHERWISE
	FLEXIBLE CONDUIT
	GROUNDING SYSTEM PER CODE
	JUNCTION BOX - SIZE PER CODE (F INDICATES FIRE ALARM SYSTEM)
	MOTOR CONNECTION
	MANUAL STARTER
	DISCONNECT SWITCH
	FUSED DISCONNECT SWITCH
	120/208 VOLT PANELBOARD (OR AT RATED VOLTAGE AS NOTED)
	MAIN DISTRIBUTION BOARD
	METER
	TRANSFORMER
	ENCLOSED CIRCUIT BREAKER, AMPERES AS INDICATED
	SURGE PROTECTOR DEVICE
	ELECTRICAL HANDHOLE
MISCELLANEOUS	
	CONSTRUCTION NOTES
W	W INDICATES WEATHERPROOF FOR ALL DEVICES, PROVIDE LOCKING COVER ON RECEPTACLES.
WG	WG INDICATES WIRE GUARD

image	tag	application	basis of design	dimensions	lamp	W	V	control	mounting	finish	lead time	notes comments
LittleFish Lighting, Inc.												
Sumner Heritage Park [24.01] Master Luminaire Schedule Reuben A. Knoblauch Heritage Park 30% JETT Landscape												
Exterior Lighting												
	S1	Promenade Pedestrian Light with technical slot for attachments	Technilum Manseng Nano Type II	130mm W 130mm L 5m H (15') 1000mm L arm	LED 3000K 70 CRI 2385 lm	16	277	0-10V dimming local occ sensor system-wide astronomical clock for auto ON/auto OFF and out of hours dimming	ground w/base plate cover	black as standard		Various attachment options available All colors and finishes per Landscape
	S2	Double-head Parking+Ped Light for angled parking along Maple and forecourt to building	Technilum Manseng PM w/ primary arm @ 18' secondary arm @ 15'	180mm W 180mm L 6m H (18')	LED 3000K 70 CRI 4480 lm 2385 lm	33 uppe 16 low	277	0-10V dimming local occ sensor system-wide astronomical clock for auto ON/auto OFF and out of hours dimming	ground w/base plate cover	black as standard		Various attachment options available All colors and finishes per Landscape
	S3	Ground Mounted Uplight for feature tree illumination	Bega B98006-K3-BLK	11 3/4"φ 9 3/4" H	LED 3000K 80 CRI 596 lm	11	120-277	0-10V dimming system-wide astronomical clock for auto ON/auto OFF	ground on concrete pad (by others)	black as standard		Concrete pad needed for installation All colors and finishes per Landscape
	S4	Flexible Linear LED Strip for under seating, seat wall and stairs	Q-Tran Q-Cap Anybend Static White Wet w/ low-profile mounting clips ANBD-SW-PPS-LP-2-WET-30-1.0-ENC/TL	0.38" W 0.38" H lengths as indicated on drawings	LED 3000K 96 CRI 47 lm	1 per ft	120	0-10V dimming system-wide astronomical clock for auto ON/auto OFF	surface in architectural niche	n/a		UL Wet rated This item will only be static white Architectural niche by Landscape
	S4 alt	Not used										
	S5	Flexible Linear LED VHO Grazer for feature illumination of main signage	Q-Tran Q-Cap Anybend Static White Wet	0.38" W 0.38" H lengths as indicated on drawings	LED 3000K 96 CRI 300 lm	4 per ft	120	0-10V dimming system-wide astronomical clock for auto ON/auto OFF	surface in architectural niche	n/a		UL Wet rated Architectural niche by Landscape
	S6	Not used										
	S6 alt	Catenary Mount Festoon RGBW Lighting for Hops Alley and Garden Dining	Tivoli Litesphere True RGB+W 12" o.c.	2.5"φ 3.8" H	LED RGBW 55 lm max	0.23 per ft	24	DMX needed system-wide astronomical clock for auto ON/auto OFF	clipped to catenary stainless steel cable (by others)	black wire opal lens		IP67 / UL Wet rated Recommend using Structura PIPE All colors and finishes per Landscape
	S7	Not used										
	S7 alt	Large Metal Catenary Circle of Light for place making and festivals	Structura Volta Metal Ring Direct	40" φ 4" H nom	LED 3000K 90 CRI 2360 lm	36	120-277	0-10V dimming system-wide astronomical clock for auto ON/auto OFF	suspended from catenary stainless steel cable (by others)	various available		IP67 / UL Wet rated Recommend using Structura PIPE All colors and finishes per Landscape
	S8	Not used										
	S9	Not used										
	P1	Pole for Catenary Lighting for catenary stainless steel cable to support festoon lighting (S6Alt) and feature ring (S7Alt)	Structura PIPE Straight Round Steel Pole for Catenary Systems w/GFI power receptacle *estimated 5"φ thick	16' H Diameter + Wall Thickness TBD by Structural	n/a	n/a	n/a	local occ sensor for festoon (S6Alt) and ring downlight (S7Alt) for out of hours dimming	ground on concrete footing (by others)	black as standard		Diameter + Wall Thickness TBD by Structural All colors and finishes per Landscape
	P2	Pole for Catenary Lighting for catenary stainless steel cable to support festoon lighting (S6Alt) and feature ring (S7Alt)	Structura PIPE Straight Round Steel Pole for Catenary Systems *estimated 5"φ thick	16' H Diameter + Wall Thickness TBD by Structural	n/a	n/a	n/a	system-wide astronomical clock for auto ON/auto OFF and out of hours dimming	ground on concrete footing (by others)	black as standard		Diameter + Wall Thickness TBD by Structural All colors and finishes per Landscape
General NOTES:												
1 All luminaires shown are Basis of Design, and chosen to meet aesthetic, performance and code requirements. Any alternative/substitution will impact the overall design.												
2 Any alternative/substitution proposed MUST meet performance, as indicated, and must be submitted to LFL or architect for approval beforehand.												
3 All fixtures will be LED unless otherwise specified.												
4 All luminaires to have manufacturers' minimum 5 year warranty.												
5 All luminaire finish colors to be confirmed by architect and interiors prior to purchase.												
6 All mounting and connections required are by Contractor.												
7 All Voltage requirements to be confirmed by Contractor prior to order.												
8 Centralized Control System, photosensors, occupancy sensors, zoned lighting controls and DMX color controller by others.												
9 All exterior wiring, cable boxes, junction boxes to be NEMA rated.												
10 All circuiting and dimming detail as per Electrical Engineer.												

REV	DATE	DESCRIPTION

SHEET TITLE
ELECTRICAL LEGEND, NOTES AND FIXTURE SCHEDULE

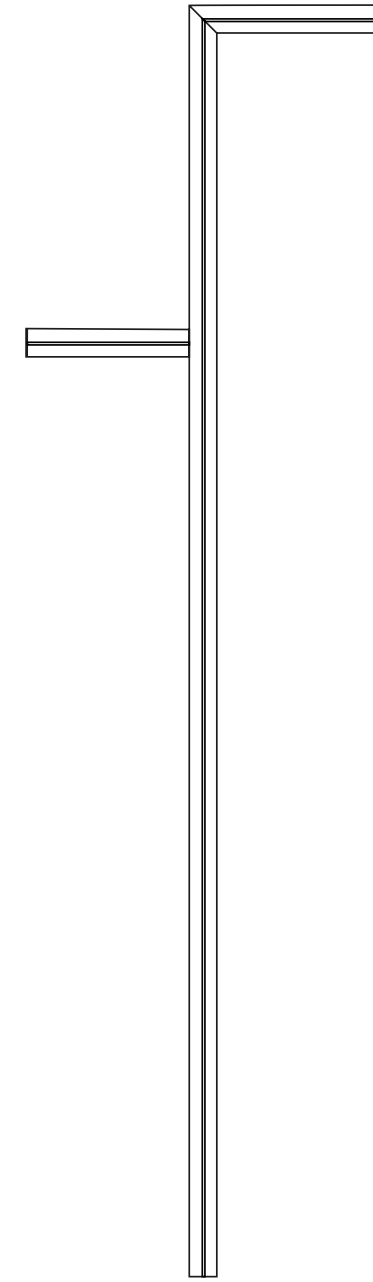
PROJ. NO.: -
 DATE: August 30, 2024

DRAWN BY: KN DESIGN BY: HS

SHEET NUMBER:
E0.01



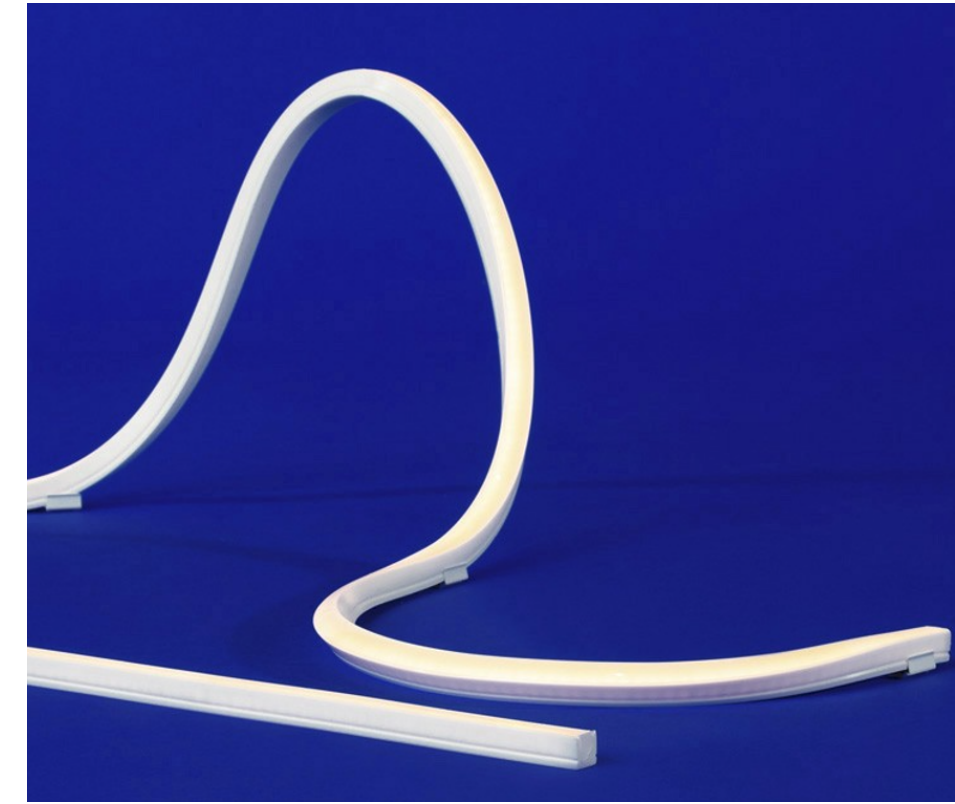
S1 - FIXTURE



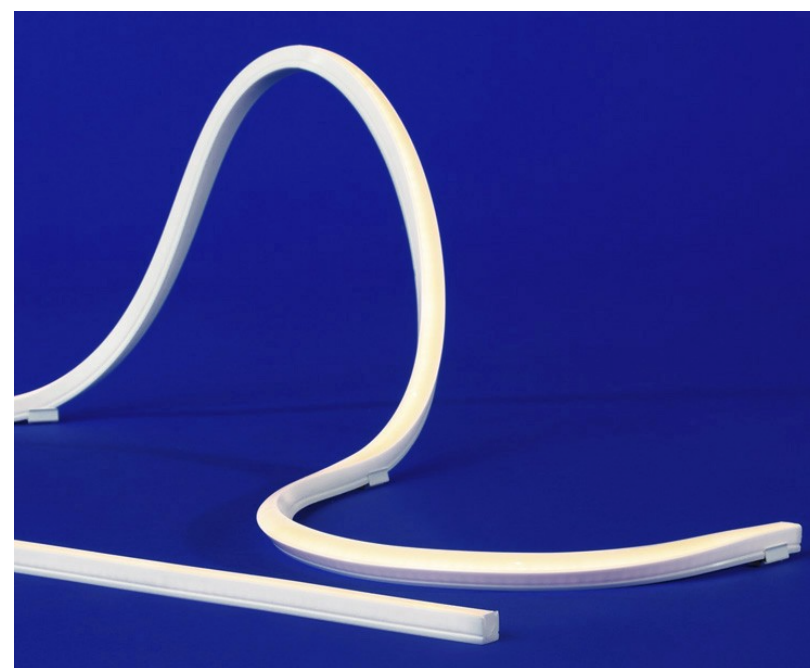
S2 - FIXTURE



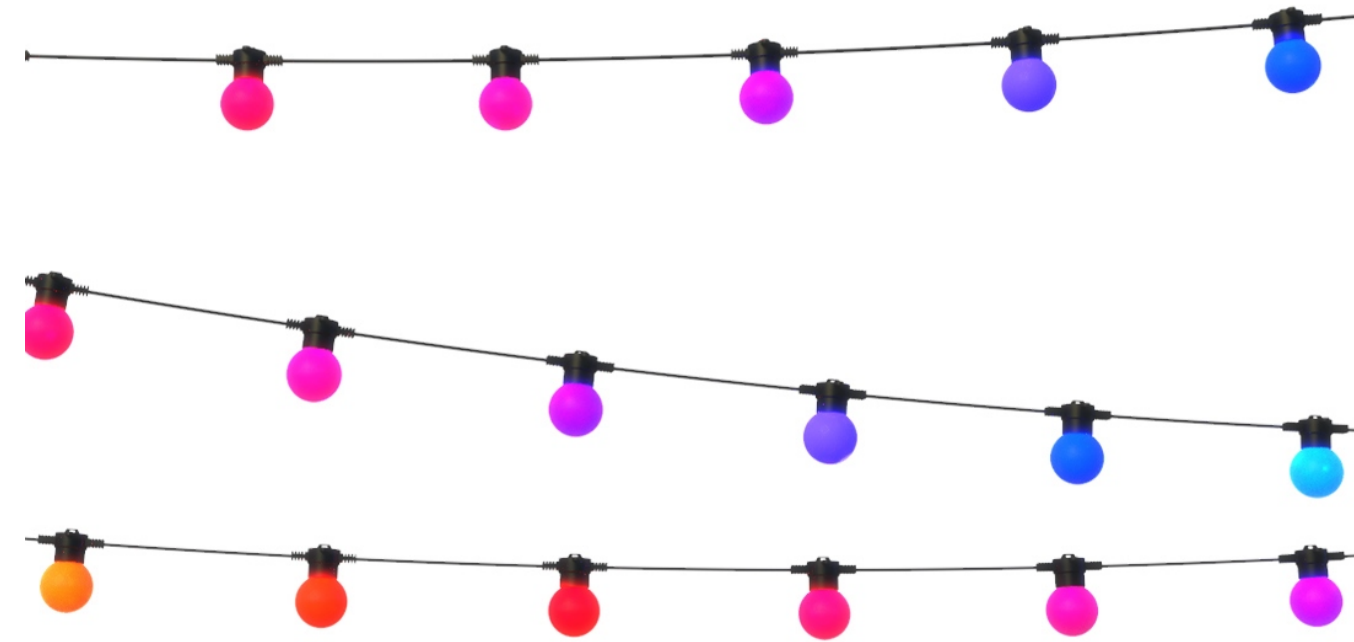
S3 - FIXTURE



S4 - FIXTURE



S5 - FIXTURE



S6alt - FIXTURE



S7alt - FIXTURE



P1, P2 - POLES

ONE INCH AT FULL SCALE.
 IF NOT, SCALE ACCORDINGLY

30% CONSTRUCTION
 DOCUMENTS

REV	DATE	DESCRIPTION

SHEET TITLE
FIXTURE SCHEDULES

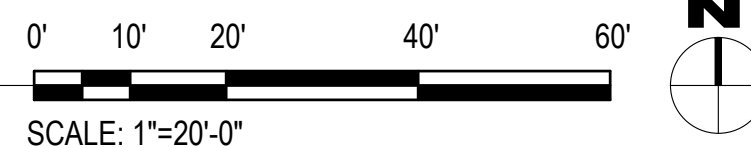
PROJ. NO.:	-
DATE:	August 30, 2024
DRAWN BY:	KN
DESIGN BY:	HS

SHEET NUMBER:
E0.02

DWG. _____ OF ____ XX



1 SITE LIGHTING PLAN
1" = 20'-0"



CALL TWO BUSINESS DAYS
BEFORE YOU DIG
1-800-424-5555
UTILITIES UNDERGROUND LOCATION CENTER

Owner/Developer:
CITY OF SUMNER
WASHINGTON
City of Sumner
1104 Maple Street
Sumner, WA 98390
(253) 299-5700

Landscape Architect:
JETT
LANDSCAPE ARCHITECTURE + DESIGN
JETT
3445 California Ave SW
Seattle, WA 98116
(206) 909-3890

Engineer:
BCE
A Division of TranSystems
6021 12th Street East, Suite 200
Fife, Washington 98424
T: 253.922.0446 | F: 253.922.0896

Project:
Heritage Park

ONE INCH AT FULL SCALE.
IF NOT, SCALE ACCORDINGLY

30% CONSTRUCTION
DOCUMENTS

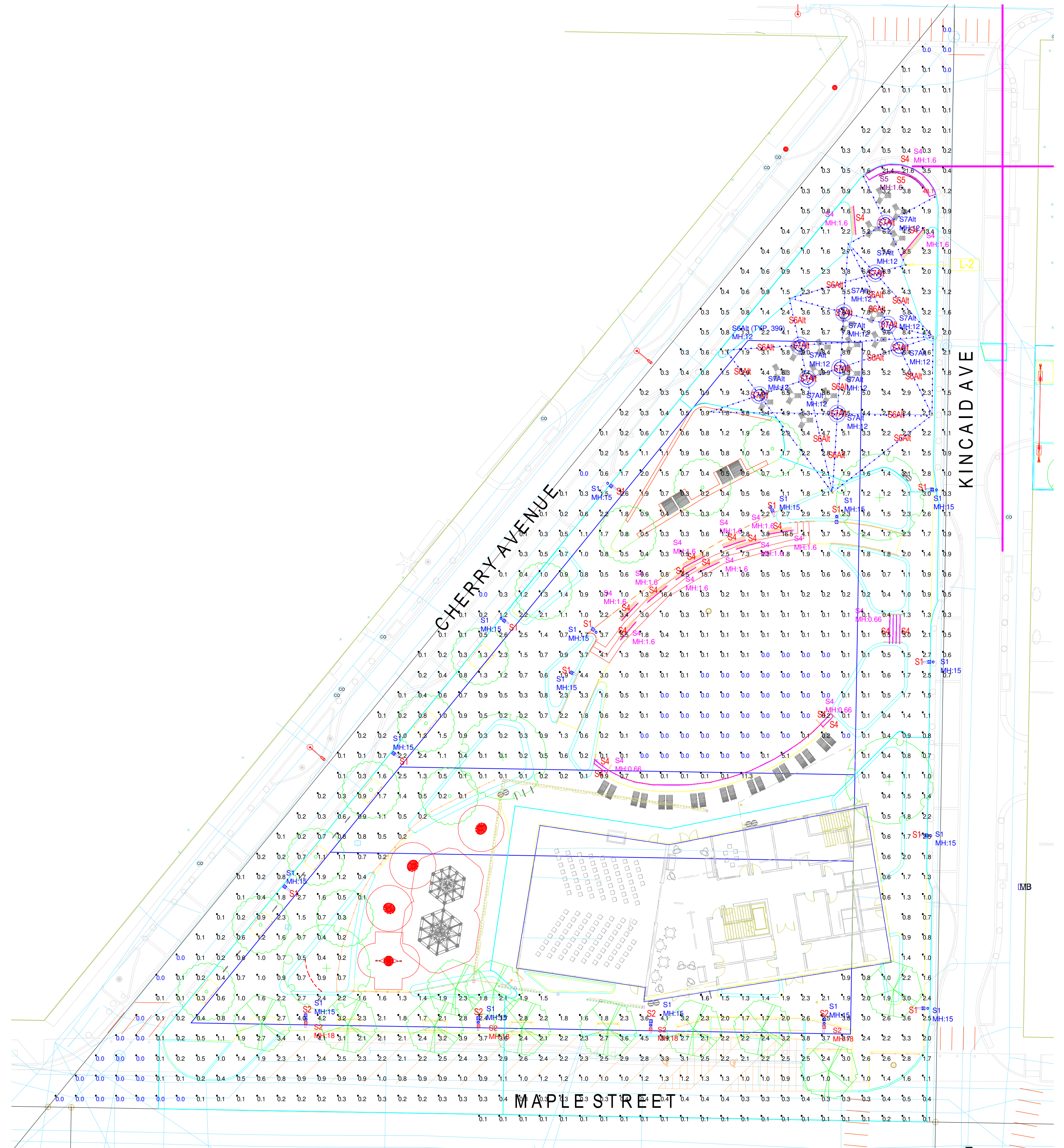
REV	DATE	DESCRIPTION

SHEET TITLE:
SITE LIGHTING PLAN

PROJ. NO.:
DATE: August 30, 2024
DRAWN BY: KN DESIGN BY: HS

SHEET NUMBER:
E1.01

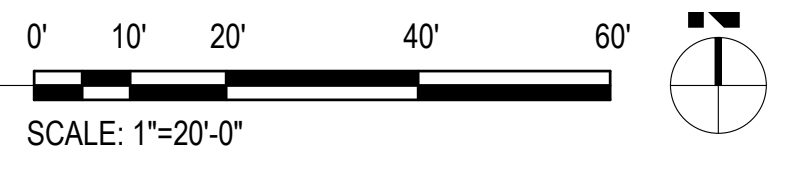
DWG. _____ OF _____ XX



Symbol	Qty	Label	Arrangement	LLF	Description	Lum. Watts	Lum. Lumens	Filename	Mounting Height
[Symbol]	16	S1	Single	0.900	Technilum Karéo² T3 16	16	1948	Technilum Karéo² T3 16W 2170 lm 3000K 14825.ies	15
[Symbol]	4	S2	Single	0.900	Technilum Karéo² T3 33	33	3896	Technilum Karéo² T3 33W 4340 lm 3000K 14825.ies	18
[Symbol]	17	S5	Single	0.900	ANYBEND-SW-WSC-DRY-30-VHO-ENC	3.84	217	ANYBEND-SW-WSC-DRY-30-VHO-ENC-TL.ies	1.6
[Symbol]	301	S4	Single	0.900	ANYBEND-SW-WSC-DRY-30-SO-ENC	1.01	47	ANYBEND-SW-WSC-DRY-30-SO-ENC-TL.ies	0.6, 0.66, 1.6
[Symbol]	10	S7 Alt	Single	0.900	VOLTA-RNG-D-4-L30MO-S(X)-XX-S	35.75	2362	VOLTA-RNG-D-4-L30MO-S(X)-XX-STD.ies	12
[Symbol]	390	S6Alt	Single	0.900	LST-BK-OP	5.7	56	S6Alt 7032-LST-BK-OP.ies	12

Calculation Summary									
Label	CalcType	Units	Avg	Max	Min	Avg/Min	Max/Min	Description	
CalcPts	Illuminance	Fc	1.59	48.1	0.0	N.A.	N.A.	readings taken at grade	
STEP AREA LIGHTING	Illuminance	Fc	33.65	76.3	15.4	2.19	4.95	readings taken at grade	

1 SITE LIGHTING PLAN - PHOTOMETRIC
1" = 20'-0"



CALL TWO BUSINESS DAYS BEFORE YOU DIG
1-800-424-5555
UTILITIES UNDERGROUND LOCATION CENTER

Owner/Developer:
CITY OF SUMNER
WASHINGTON
City of Sumner
1104 Maple Street
Sumner, WA 98390
(253) 299-5700

Landscape Architect:
JETT
LANDSCAPE ARCHITECTURE + DESIGN
JETT
3445 California Ave SW
Seattle, WA 98116
(206) 909-3890

Engineer:
BCE
A Division of TranSystems
6021 12th Street East, Suite 200
Fife, Washington 98424
T: 253.922.0446 | F: 253.922.0896

Project:
Heritage Park

ONE INCH AT FULL SCALE.
IF NOT, SCALE ACCORDINGLY

30% CONSTRUCTION DOCUMENTS

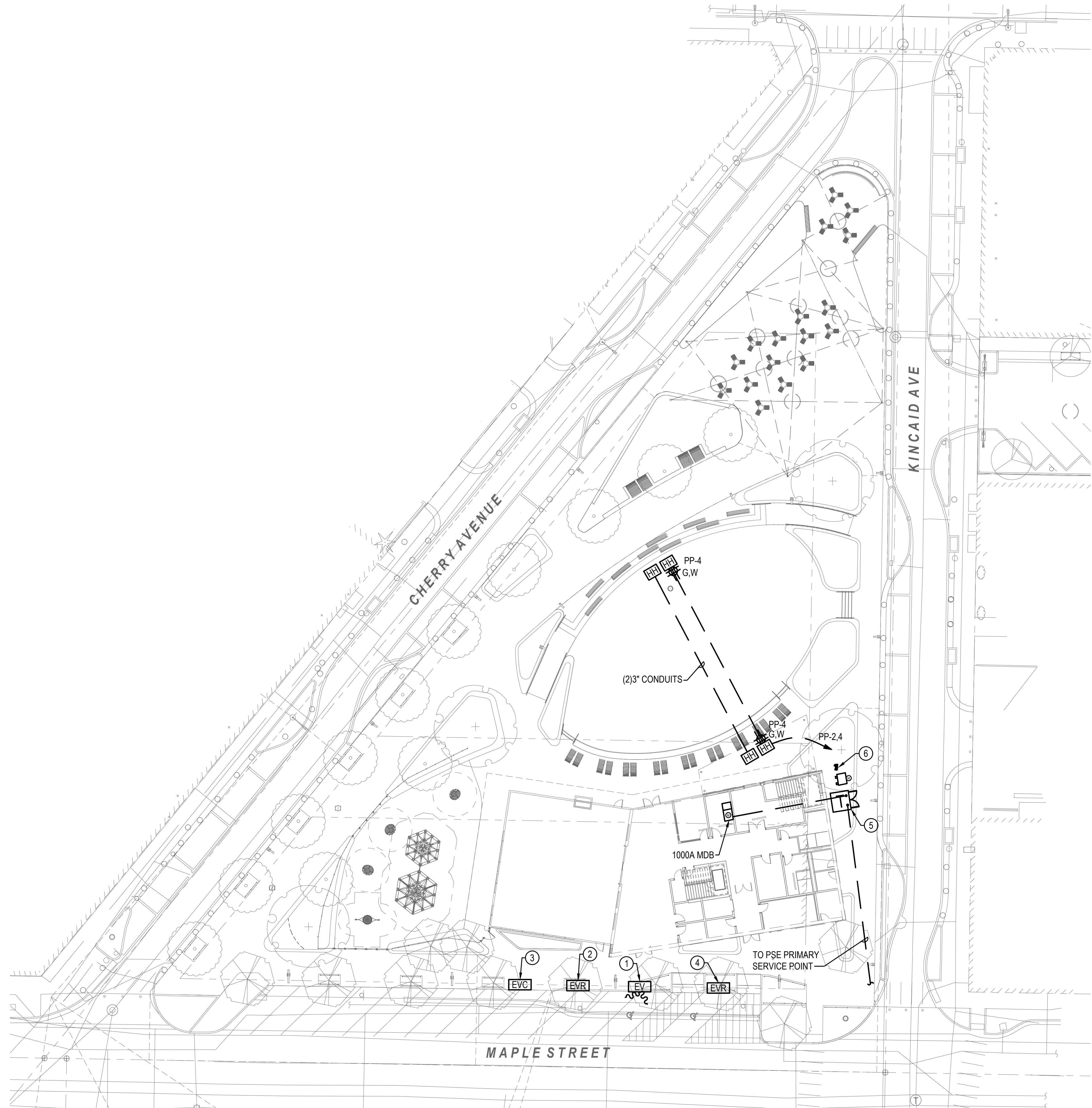
REV	DATE	DESCRIPTION

SHEET TITLE
SITE LIGHTING PLAN - PHOTOMETRIC

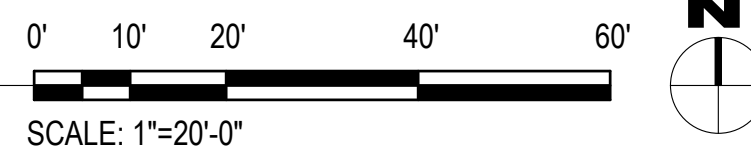
PROJ. NO.:
DATE: August 30, 2024
DRAWN BY: KN DESIGN BY: HS

SHEET NUMBER
E1.02

DWG. _____ OF ____ XX



1 SITE POWER PLAN
1" = 20'-0"



CONSTRUCTION NOTES

- ① EV CHARGER - PROVIDE CONNECTION TO DUAL PORT EV CHARGER WITH (2) 50A CIRCUIT FROM SITE PANELBOARD "PP" SERVING THE EV CHARGERS.. Infrastructure only for EV chargers (conduit and j-boxes)
- ② EV READY - PROVIDE HANDHOLE WITH (2) 50A CIRCUIT FROM SITE PANELBOARD "PP" SERVING THE EV CHARGERS.
- ③ EV CAPABLE - PROVIDE HANDHOLE WITH (2) 1" CONDUIT WITH PULLSTRING FROM SITE PANELBOARD "PP" SERVING THE EV CHARGERS.
- ④ EV READY - PROVIDE HANDHOLE WITH (1) 50A CIRCUIT FROM SITE PANELBOARD "PP" SERVING THE EV CHARGER.
- ⑤ PROPOSED PSE PAD MOUNTED SERVICE TRANSFORMER FOR BUILDING AND SITE SERVICE.
- ⑥ PROPOSED PARK SERVICE METER AND PANEL BOARD "PP". PROVIDE UNISTRUT SYSTEM AND CONCRETE PAD FOR SUPPORT.

Owner/Developer:
 **CITY OF SUMNER**
 WASHINGTON
 City of Sumner
 1104 Maple Street
 Sumner, WA 98390
 (253) 299-5700

Landscape Architect:
 **JETT**
 LANDSCAPE ARCHITECTURE + DESIGN
 JETT
 3445 California Ave SW
 Seattle, WA 98116
 (206) 909-3890

Engineer:
 **BCE**
 A Division of TranSystems
 6021 12th Street East, Suite 200
 Fife, Washington 98424
 T: 253.922.0446 | F: 253.922.0896

Project:
Heritage Park

ONE INCH AT FULL SCALE.
 IF NOT, SCALE ACCORDINGLY

30% CONSTRUCTION DOCUMENTS

REV	DATE	DESCRIPTION

SHEET TITLE
SITE POWER PLAN

PROJ. NO.:
 DATE: August 30, 2024
 DRAWN BY: KN DESIGN BY: HS

SHEET NUMBER:
E1.03

DWG. _____ OF XX

CALL TWO BUSINESS DAYS BEFORE YOU DIG
 1-800-424-5555
 UTILITIES UNDERGROUND LOCATION CENTER