



Johnston Architects, LLC
3131 Western Ave,
Suite 510
Seattle, WA 98121
t 206.523.6150
f 206.523.9382

SiteWorkshop
LANDSCAPE ARCHITECTURE

PCLS SUMNER LIBRARY
15216 MAIN STREET EAST
SUMNER, WA 98390

DRAWING ISSUE
06/12/2024 SD PRICING
07/25/2024 SCHEMATIC DESIGN
09/20/2024 50% DD
10/07/2024 CUP

CUP-2024-0007



SHEET TITLE

CUP LANDSCAPE
SITE PLAN

SHEET NO.

L100

Drawn
Checked

JH_SC
VS

© 2024 JOHNSTON ARCHITECTS

LEGEND

SYMBOL	DESCRIPTION
	PROPERTY LINE
	APPROX. EASEMENT LINE PER COS GIS, REF. CIVIL
	PRIMARY PEDESTRIAN ROUTES TO BUILDING ENTRIES
	PROPERTY LINE FENCING, 6' HT. TYP. AT ALL PROPERTY LINES EXCEPT MAIN ST. E FRONTAGE AND PARKING LOT DRIVEWAY. FENCE TO BE SOLID CONSTRUCTED OF VERTICAL CEDAR SLATS AND POSTS.

PLANT SCHEDULE

TYPE A BUFFER

To meet City of Sumner Code requirements for Type A Buffers:

- 10' minimum width
- 8' minimum height trees and large shrubs spaced at 10' O.C.
- minimum of (1) shrub per 20 sf of planting area, 16" minimum height
- groundcover plants spaced at 12-18" O.C., 4" pots minimum

TYPE C LANDSCAPING

To meet City of Sumner Code requirements for Type C Landscaping:

- 2" cal. minimum deciduous trees spaced at 20' O.C.
- minimum of (1) shrub per 20 sf of planting area, 16" minimum height
- groundcover plants spaced at 12-18" O.C., 4" pots minimum

Planting character/species palette in this area to be similar to the Wet Shade planting type - possible rainwater feature connected to roof drain.

WET SHADE

Planting character/species in this palette to be adapted to shadier and wet conditions. Plant species to be native and adapted mix of grasses, forbes, and shrubs. Grasses and forbes to be #1 spaced at 12-18" O.C. Shrubs to be #1-#5 spaced per plan. Plants to be spaced to proved full coverage at maturity.

DRY SUN

Planting character/species in this palette to be adapted to sunnier and drier conditions. Plant species to be native and adapted mix of grasses, forbes, and shrubs. Grasses and forbes to be #1 spaced at 12-18" O.C. Shrubs to be #1-#5 spaced per plan. Plants to be spaced to proved full coverage at maturity.

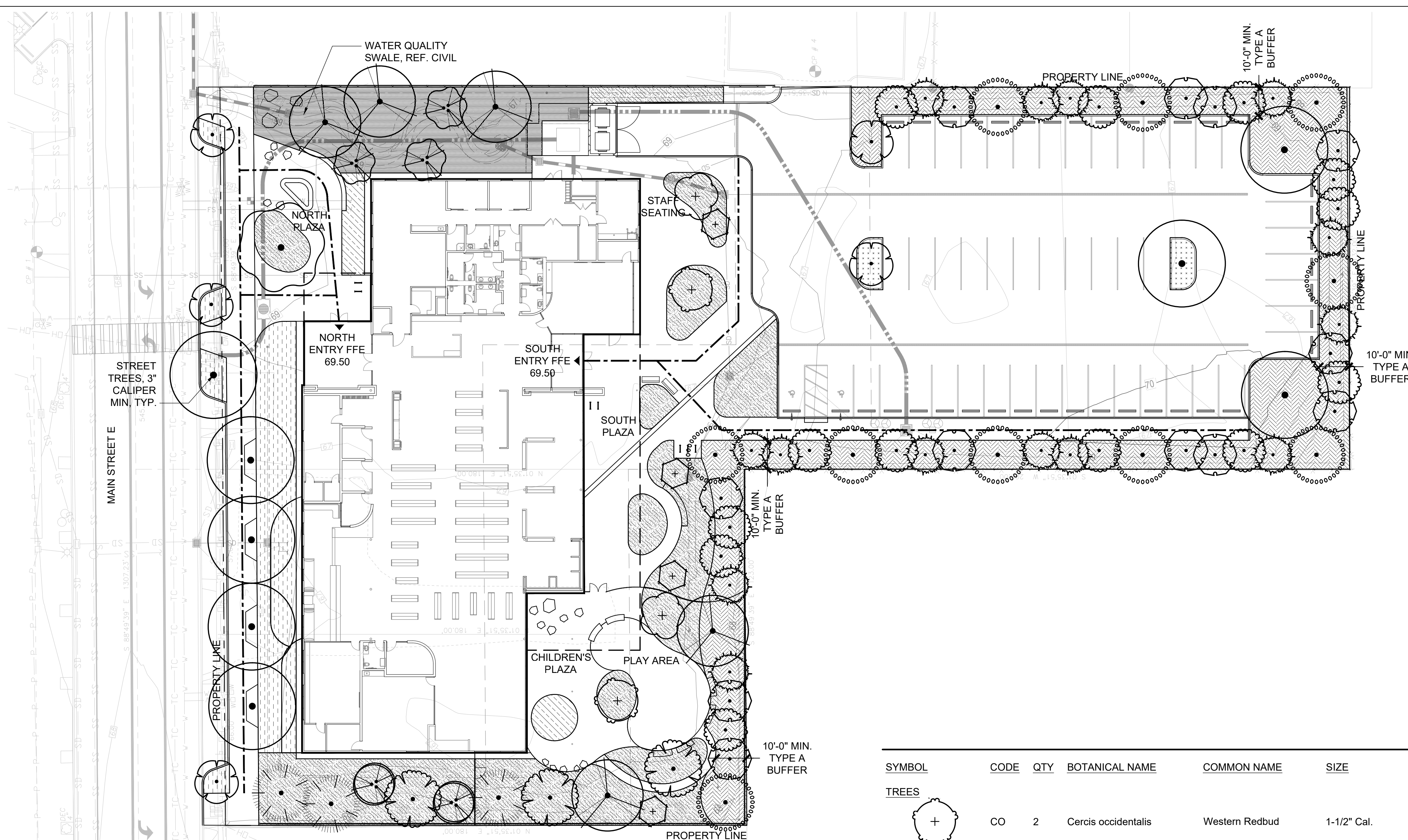
PARKING LOT ISLANDS

To meet City of Sumner Code requirements for Parking Lot Islands:

- (1) 2" cal. minimum deciduous tree per island
- minimum of (1) shrub per 20 sf of planting area, 16" minimum height
- groundcover plants spaced at 12-18" O.C., 4" pots minimum

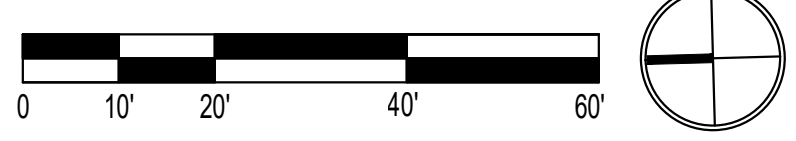
DRY SHADE

Planting character/species in this palette to be adapted to shadier and dry conditions. Plant species to be native and adapted mix of grasses, forbes, and shrubs. Grasses and forbes to be #1 spaced at 12-18" O.C. Shrubs to be #1-#5 spaced per plan. Plants to be spaced to proved full coverage at maturity.



1 CUP LANDSCAPE SITE PLAN

SCALE: 1" = 20' - 0"



TREE SCHEDULE

SYMBOL	CODE	QTY	BOTANICAL NAME	COMMON NAME	SIZE
	AC	3	Acer circinatum	Vine Maple	multi-stem, min. 3 stems
	AD	2	Acer glabrum douglasii	Douglas Maple	multi-stem, min. 3 stems
	AR	5	Alnus rubra	Red Alder	2" Cal.
	AS	2	Amelanchier alnifolia	Serviceberry	1-1/2" Cal.
	AS2	13	Arbutus unedo	Strawberry Tree	15 gal
	CD	14	Calocedrus decurrens	Incense Cedar	6'-8' ht.

SYMBOL	CODE	QTY	BOTANICAL NAME	COMMON NAME	SIZE
	CO	2	Cercis occidentalis	Western Redbud	1-1/2" Cal.
	CW	4	Corylus cornuta	Western Hazelnut	15 gal
	MO	5	Malus x 'Golden Raindrops'	Golden Raindrops Apple	3" Cal.
	MC	12	Morella californica	California Wax Myrtle	15 gal
	PJ	3	Pinus jeffreyi	Jeffrey Pine	6'-8' ht.
	QS	8	Quercus frainetto 'Schmidt'	Forest Green Oak	3" Cal.
	QG	1	Quercus garryana	Oregon White Oak	3" Cal.
	RP	3	Rhamnus purshiana	Cascara	2" Cal.
	UL	10	Umbellularia californica	California Bay	15 gal

REVIEW #1