

CITY 101

City Hall
1104



CITY OF
SUMNER
WASHINGTON

Housekeeping

- Introductions
- Restrooms
- Emergency Evacuation
- Code of Conduct



A top-down view of several yellow pencils scattered on a solid red background. The pencils are oriented in various directions, creating a sense of movement and activity. The lighting is soft, highlighting the texture of the pencils and the erasers.

Trivia Game

A photograph of a city street at night, covered in snow. The street is lined with shops and buildings, some with illuminated signs. Streetlights are on, and a snowflake sign hangs from a pole. The sky is dark blue.

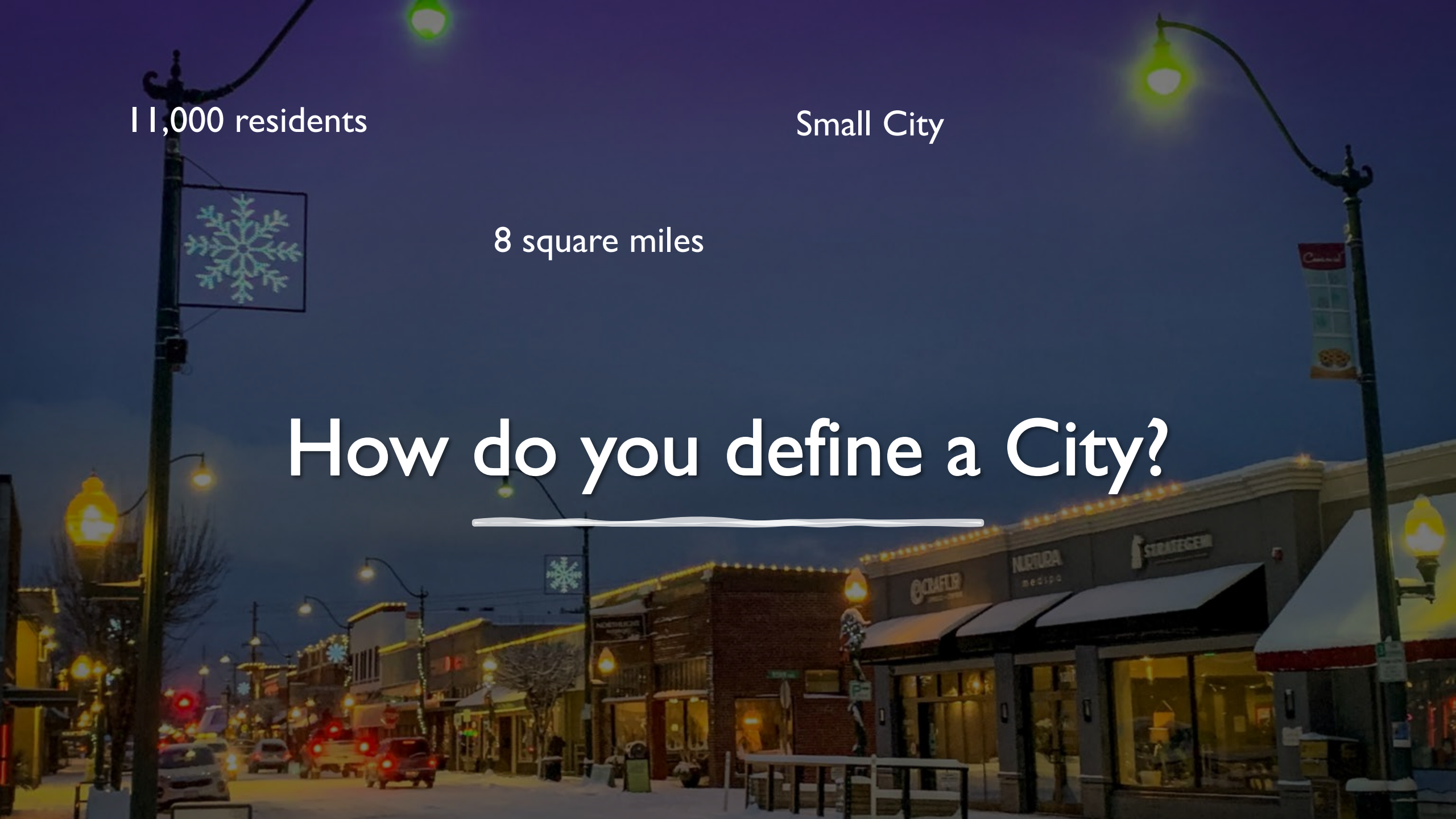
How do you define a City?

11,000 residents

Small City

8 square miles

How do you define a City?



11,000 residents

Small City

8 square miles

18,000 people work in the MIC

91,000 people commute DAILY

293,000 people visit Downtown Sumner

How do you define a City?



But, what about...

Defined by services provided, Sumner is one of the **largest** cities in Pierce County. We run

- Administration
- Development Services
 - Code Enforcement
 - Building Official
- Police
- Parks
- Community Development
 - Affordable Housing
 - Economic Development
- Legal
- Court (limited jurisdiction)*
- Regional Animal Care and Control
- Cemetery
- Senior Center
- Public Works
 - Engineering for Streets, development standards
 - Water Rights
- Public Operations
 - Water
 - Stormwater
 - Roads
 - Multimodal Transportation
- Regional Wastewater Treatment

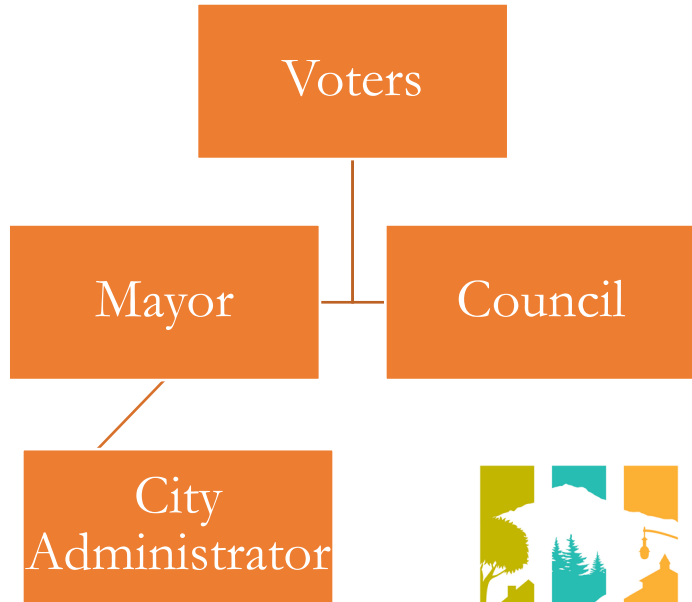
But, what about...

Defined by services provided, Sumner is one of the **largest** cities in Pierce County. We run

- Administration
- Development Services
 - Code Enforcement
 - Building Official
- ~~Police~~
- Parks
- Community Development
 - Affordable Housing
 - Economic Development
- ~~Legal~~
- ~~Court (limited jurisdiction)*~~
- ~~Regional Animal Care and Control~~
- ~~Cemetery~~
- ~~Senior Center~~
- Public Works
 - Engineering for Streets, development standards
- ~~Water Rights~~
- Public Operations
 - ~~Water~~
 - Stormwater
 - ~~Roads~~
 - Multimodal Transportation
- ~~Regional Wastewater Treatment~~

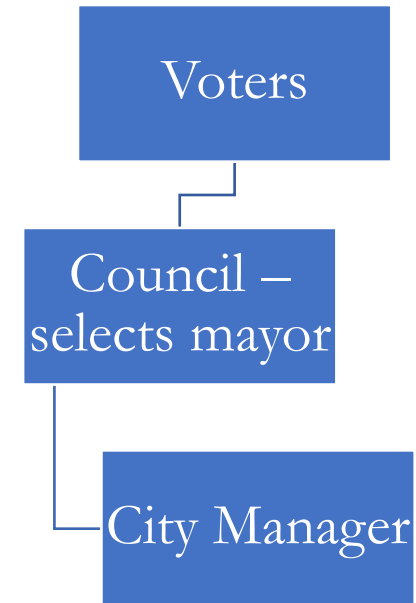
STRONG MAYOR

- Voters directly elect Mayor, who may hire an Administrator
- Mayor does not vote
- Similar to U.S. President/Congress



WEAK MAYOR

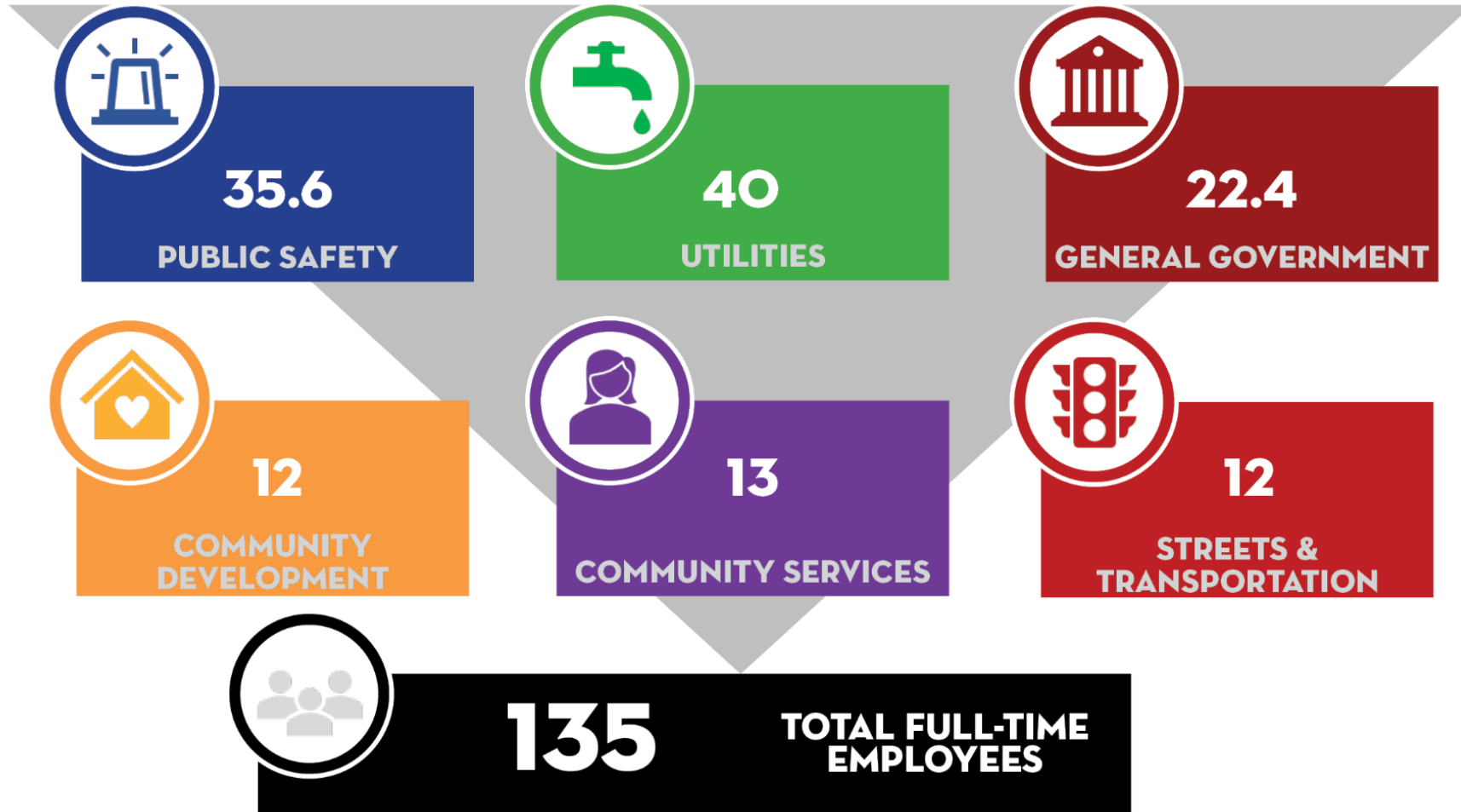
- Voters elect Councilmembers who select a Mayor (rotates)
- Council hires a City Manager for Executive branch
- Similar to U.K. Parliament



*These are the actual, technical terms for two city formats. They are not adjectives judging the leadership of each city!



2025-26 Staffing

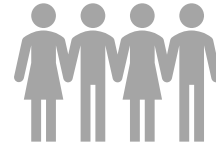


Sumner is a VALUES based organization



Values

Respect & Integrity
Collaborative & Professional
Responsive & Accountable
Innovative & Visionary



Mission

To provide needed and valued services
that promote our sense of community.



Vision

To set the standard of excellence for a
progressive small city.



Vision



Budget



Actions

2025-26 Budget – Priorities



**COMMUNITY
CHARACTER**



**PUBLIC
SAFETY**

**STRATEGIC
PRIORITIES**



**EFFECTIVE
TRANSPORTATION**








**PROTECTION OF
NATURAL RESOURCES**



**EXCELLENT
GOVERNMENT**

Strategic Priorities

Community Character 	Public Safety 	Excellent Government 	Protection of Natural Resources 	Effective Transportation 
<ul style="list-style-type: none"> • Investment in parks and open space • Balance the past with the future needs & desires of a changing community • Vibrant events that celebrate arts, heritage & culture • Policies and practices that support business growth • Maintain welcoming small-town charm • Long range planning that effectively manages growth 	<ul style="list-style-type: none"> • Responsive & proactive policing • Progressive, collaborative, & systemic social service solutions • Emergency preparedness • Partnership with community to address criminal activity • Traffic engineering, education, & enforcement 	<ul style="list-style-type: none"> • Equitable distribution of resources • Recruitment & retention of quality, diverse staff • Focused on long-range financial stability • Fiscally balanced mix of desired services • Transparency in policy and actions • Responsive to and engaged with the community • Leverage partnerships for enhanced services 	<ul style="list-style-type: none"> • Protection and enhancement of rivers, streams & fish habitat • Clean & safe drinking water • Effective stormwater management • Environmentally conscience capital investments • High quality wastewater management 	<ul style="list-style-type: none"> • Investment in existing infrastructure to create capacity and efficiencies • Focus on alternative transportation methods (bike, walking, transit) • Equitable distribution of infrastructure investments across all neighborhoods • Preservation of existing assets • Regionally aligned to mitigate “cut-through” traffic • Leverage technology to create efficiencies




Priority:
Community
Character

A photograph of a band performing on an outdoor stage. In the center, a man with a beard and sunglasses, wearing a red jacket and a patterned bandana, sings into a microphone. To his right, a woman with a black turban and glasses, wearing a blue patterned dress, also sings. To the left, another man in a black shirt plays an acoustic guitar. In the background, a man in a red and white baseball cap is visible. The stage is equipped with microphones and stands. The background shows a clear blue sky, green trees, and a utility pole. A blue banner with the letters 'OF S' is partially visible.

Events

Planning


City of Sumner Open House
Lucy V. Ryan Park - 1228 Main Street



**Concept only*

Potential Design Elements

- Tablet memorializing Lucy V. Ryan
- Gazebo (from Heritage Park)
- Picnic Tables
- Little Free Library
- Play Paths
- Planting
- Head lighting
- Lower beds
- Playcourt



and tell us what you think!

SCAN WITH PHONE'S CAMERA TO CONNECT INSTANTLY
CALL 299-5714

City of Sumner Open House
Future Park at 4811 East Valley Hwy-former Bennett Property



and tell us what you think!

SCAN WITH PHONE'S CAMERA TO CONNECT INSTANTLY
CALL 299-5714
WWW.SUMNER.WA.GOV

CITY OF SUMNER

Skate Park Demolition



The Sumner Skate (5k8) Park has been closed since late 2024 due to hazardous conditions.

An independent analysis determined that the park is at end of life and needs considerable repairs that would only extend the life up to 5 years.

The Council will consider a demolition contract on October 6th.

The Parks and Trail Plan templates a similar park or pump track, however there is not currently one in development.

History



Learn more and tell us what you think!

PROJECT MANAGER: [Name] Wright
CALL 253-299-5708

Decorations

- Lights
- Banners
- Hanging Baskets





Priority:
Public Safety

Officer Wellness





Community Programs



Flood Protection

Flood Response

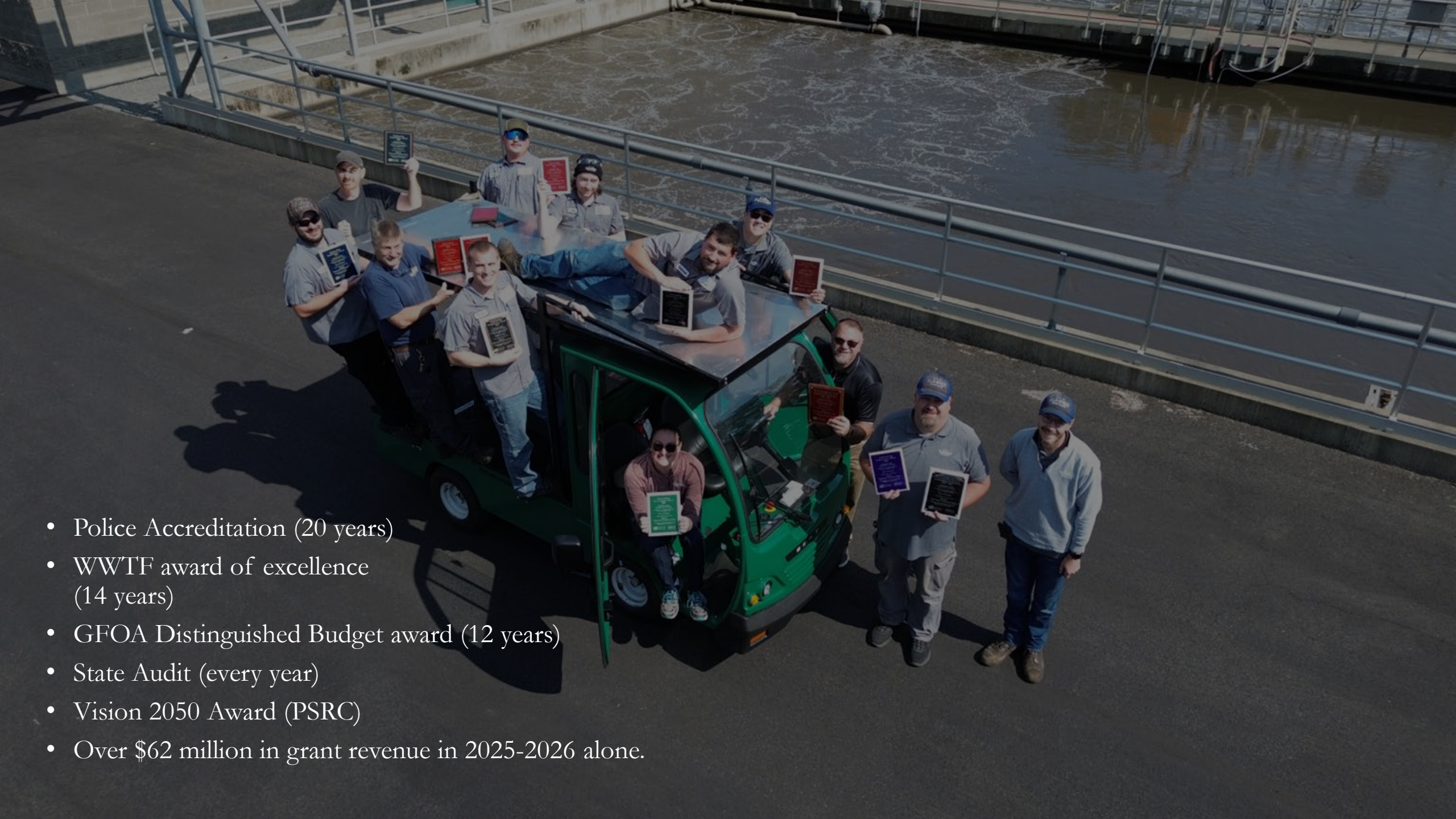


Traffic Safety Engineering

A photograph of a street construction site. In the foreground, a paved area with a brick-like pattern leads to a concrete curb. A large orange traffic barrel with a reflective white stripe and a yellow reflective cap sits on the curb. Behind it, a metal grate covers a utility opening. Further back, the street is cordoned off with yellow caution tape and several orange traffic barrels. In the background, there are several buildings, including one with a green roof and another with the number 913. The scene is set during the day under an overcast sky.



Priority:
Excellent
Government



- Police Accreditation (20 years)
- WWTF award of excellence (14 years)
- GFOA Distinguished Budget award (12 years)
- State Audit (every year)
- Vision 2050 Award (PSRC)
- Over \$62 million in grant revenue in 2025-2026 alone.

City of Sumner, WA

Utility Billing

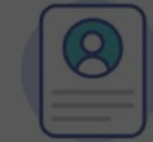
Online Services



Quick pay

Just need to pay your bill? Click quick pay below. You'll need your account number. No login necessary.

Quick pay



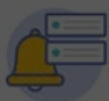
Sign in or sign up

Create an account to view details, manage single & multi-accounts, multi-bill pay, and e-Billing.

Sign in or sign up

- Permits
- Utility bill pay
- Report a problem
- Records request
- Archived meeting videos
- Live meeting videos
- Job applications
- Police report
- Latest crime stats
- Leave a comment

Customer Service Hours



City Hall is open to the public Monday - Thursday from 8:00 AM to 5:00 PM. We are available by e-mail/phone/web Monday - Thursday 7:30 AM to 5:30 PM, and Friday from 8:00 AM to 12:00 PM.

Utility payments can be made online or in the City Hall dropbox after business hours.

Accepted payment methods



Have a question?

253-299-5546



Autonomous Mower





Seed interns



**Priority:
Protection of
Natural
Resources**

Wastewater Facility



Safe Water System



Green Burials





**Priority:
Effective
Transportation**

Road Projects

- Stewart Road Bridge
- 166th interchange
- Washington Street
- Rivergrove Pedestrian Bridge



Walkable Community



PARKING
SIDEWALK
CLOSE

NO PARKING
FROM 8/4 to 9/4
TO

**Audience
Wake-Up Time:**
What do you
think are the top
3 challenges
facing the City of
Sumner?





Our List:

1. Unbalanced discourse
2. Loss of local control
3. Fiscal cliff

The Fiscal Cliff

- City revenue (property tax) is capped at 1%
- Costs keep going up
 - Inflation
 - Gas prices
 - Unfunded mandates
- Nothing “easy” left to cut





In the past, cities put a lot of focus on providing their residents with traditional services like police, fire and emergency services, local transportation, parks and recreation, planning and growth management, and basic utilities.

While those are still primary duties, the role of cities is ever-expanding to include more responsibilities for a broadening range of services.

- Association of Washington Cities

QUESTIONS

City Hall
1104



CITY OF
SUMNER
WASHINGTON